

16, 17, 18, 19, 20, 21, 22, 23, 24, 25, 26, 27, 28, 29, 30, 31, 32, 33, 34, 35, 36, 37, 38, 39, 40, 41, 42, 43, 44, 45, 46, 47, 48, 49, 50, 51, 52, 53, 54, 55, 56, 57, 58, 59, 60, 61, 62, 63, 64, 65, 66, 67, 68, 69, 70, 71, 72, 73, 74, 75, 76, 77, 78, 79, 80, 81, 82, 83, 84, 85, 86, 87, 88, 89, 90, 91, 92, 93, 94, 95, 96, 97, 98, 99, 100, 101, 102, 103, 104, 105, 106, 107, 108, 109, 110, 111, 112, 113, 114, 115, 116, 117, 118, 119, 120, 121, 122, 123, 124, 125, 126, 127, 128, 129, 130, 131, 132, 133, 134, 135, 136, 137, 138, 139, 140, 141, 142, 143, 144, 145, 146, 147, 148, 149, 150, 151, 152, 153, 154, 155, 156, 157, 158, 159, 160, 161, 162, 163, 164, 165, 166, 167, 168, 169, 170, 171, 172, 173, 174, 175, 176, 177, 178, 179, 180, 181, 182, 183, 184, 185, 186, 187, 188, 189, 190, 191, 192, 193, 194, 195, 196, 197, 198, 199, 200, 201, 202, 203, 204, 205, 206, 207, 208, 209, 210, 211, 212, 213, 214, 215, 216, 217, 218, 219, 220, 221, 222, 223, 224, 225, 226, 227, 228, 229, 230, 231, 232, 233, 234, 235, 236, 237, 238, 239, 240, 241, 242, 243, 244, 245, 246, 247, 248, 249, 250, 251, 252, 253, 254, 255, 256, 257, 258, 259, 260, 261, 262, 263, 264, 265, 266, 267, 268, 269, 270, 271, 272, 273, 274, 275, 276, 277, 278, 279, 280, 281, 282, 283, 284, 285, 286, 287, 288, 289, 290, 291, 292, 293, 294, 295, 296, 297, 298, 299, 300, 301, 302, 303, 304, 305, 306, 307, 308, 309, 310, 311, 312, 313, 314, 315, 316, 317, 318, 319, 320, 321, 322, 323, 324, 325, 326, 327, 328, 329, 330, 331, 332, 333, 334, 335, 336, 337, 338, 339, 340, 341, 342, 343, 344, 345, 346, 347, 348, 349, 350, 351, 352, 353, 354, 355, 356, 357, 358, 359, 360, 361, 362, 363, 364, 365, 366, 367, 368, 369, 370, 371, 372, 373, 374, 375, 376, 377, 378, 379, 380, 381, 382, 383, 384, 385, 386, 387, 388, 389, 390, 391, 392, 393, 394, 395, 396, 397, 398, 399, 400, 401, 402, 403, 404, 405, 406, 407, 408, 409, 410, 411, 412, 413, 414, 415, 416, 417, 418, 419, 420, 421, 422, 423, 424, 425, 426, 427, 428, 429, 430, 431, 432, 433, 434, 435, 436, 437, 438, 439, 440, 441, 442, 443, 444, 445, 446, 447, 448, 449, 450, 451, 452, 453, 454, 455, 456, 457, 458, 459, 460, 461, 462, 463, 464, 465, 466, 467, 468, 469, 470, 471, 472, 473, 474, 475, 476, 477, 478, 479, 480, 481, 482, 483, 484, 485, 486, 487, 488, 489, 490, 491, 492, 493, 494, 495, 496, 497, 498, 499, 500, 501, 502, 503, 504, 505, 506, 507, 508, 509, 510, 511, 512, 513, 514, 515, 516, 517, 518, 519, 520, 521, 522, 523, 524, 525, 526, 527, 528, 529, 530, 531, 532, 533, 534, 535, 536, 537, 538, 539, 540, 541, 542, 543, 544, 545, 546, 547, 548, 549, 550, 551, 552, 553, 554, 555, 556, 557, 558, 559, 560, 561, 562, 563, 564, 565, 566, 567, 568, 569, 570, 571, 572, 573, 574, 575, 576, 577, 578, 579, 580, 581, 582, 583, 584, 585, 586, 587, 588, 589, 590, 591, 592, 593, 594, 595, 596, 597, 598, 599, 600, 601, 602, 603, 604, 605, 606, 607, 608, 609, 610, 611, 612, 613, 614, 615, 616, 617, 618, 619, 620, 621, 622, 623, 624, 625, 626, 627, 628, 629, 630, 631, 632, 633, 634, 635, 636, 637, 638, 639, 640, 641, 642, 643, 644, 645, 646, 647, 648, 649, 650, 651, 652, 653, 654, 655, 656, 657, 658, 659, 660, 661, 662, 663, 664, 665, 666, 667, 668, 669, 670, 671, 672, 673, 674, 675, 676, 677, 678, 679, 680, 681, 682, 683, 684, 685, 686, 687, 688, 689, 690, 691, 692, 693, 694, 695, 696, 697, 698, 699, 700, 701, 702, 703, 704, 705, 706, 707, 708, 709, 710, 711, 712, 713, 714, 715, 716, 717, 718, 719, 720, 721, 722, 723, 724, 725, 726, 727, 728, 729, 730, 731, 732, 733, 734, 735, 736, 737, 738, 739, 740, 741, 742, 743, 744, 745, 746, 747, 748, 749, 750, 751, 752, 753, 754, 755, 756, 757, 758, 759, 760, 761, 762, 763, 764, 765, 766, 767, 768, 769, 770, 771, 772, 773, 774, 775, 776, 777, 778, 779, 780, 781, 782, 783, 784, 785, 786, 787, 788, 789, 790, 791, 792, 793, 794, 795, 796, 797, 798, 799, 800, 801, 802, 803, 804, 805, 806, 807, 808, 809, 810, 811, 812, 813, 814, 815, 816, 817, 818, 819, 820, 821, 822, 823, 824, 825, 826, 827, 828, 829, 830, 831, 832, 833, 834, 835, 836, 837, 838, 839, 840, 841, 842, 843, 844, 845, 846, 847, 848, 849, 850, 851, 852, 853, 854, 855, 856, 857, 858, 859, 860, 861, 862, 863, 864, 865, 866, 867, 868, 869, 870, 871, 872, 873, 874, 875, 876, 877, 878, 879, 880, 881, 882, 883, 884, 885, 886, 887, 888, 889, 890, 891, 892, 893, 894, 895, 896, 897, 898, 899, 900, 901, 902, 903, 904, 905, 906, 907, 908, 909, 910, 911, 912, 913, 914, 915, 916, 917, 918, 919, 920, 921, 922, 923, 924, 925, 926, 927, 928, 929, 930, 931, 932, 933, 934, 935, 936, 937, 938, 939, 940, 941, 942, 943, 944, 945, 946, 947, 948, 949, 950, 951, 952, 953, 954, 955, 956, 957, 958, 959, 960, 961, 962, 963, 964, 965, 966, 967, 968, 969, 970, 971, 972, 973, 974, 975, 976, 977, 978, 979, 980, 981, 982, 983, 984, 985, 986, 987, 988, 989, 990, 991, 992, 993, 994, 995, 996, 997, 998, 999, 1000



VISITING MAYOR GREETED—This was the scene in the Council room on the second floor of the Municipal Building Monday morning when the Mt. Morris mayor, James Callahan, was presented a "key to Chelsea" by Councilman Larry Chapman, chairman of Mayors' Exchange day here. From left, those in the photo are Mrs. Larry Chapman, Councilman J. Vincent Burg, II, Chapman, Mayor Callahan, Mrs. Callahan, Chelsea Village Clerk George Winans, William Slattery of the Board of Supervisors at Mt. Morris, Village Assessor Thomas Smith, Mrs. Slattery, Mrs. Clarence Wood and Councilman Clarence Wood. The Mt. Morris visitors, in expressing appreciation for the hospitality extended them here, said they were very much impressed with Chelsea and its facilities.

# Exchange Mayor Entertained

Chelsea's school band made an outstanding addition to the Mayors' Exchange Day parade here Monday. Led by the Chelsea police car and the marching band, the Mt. Morris mayor and his party were escorted to the Municipal Building for a welcoming ceremony.

Chelsea's five trucks added to the effectiveness of the cavalcade as it passed along South Main St. from Pierce Memorial Park after the Mt. Morris mayor had been greeted by Chelsea Village officials, headed by Councilman Larry Chapman, Mayors' Exchange Day chairman.

In the Village Council room at the Municipal Building, Larry Chapman presented the large replica of a key, designated as "the key to the village" to the Mt. Morris mayor, James Callahan.

In the Mt. Morris mayor's party were his wife and Mr. and Mrs. William Slattery. Mr. Slattery is a member of Genesee county Board of Supervisors from his home community.

Slattery was presented with an engraved key chain and both of the ladies were presented with corsages, a gift from Chelsea Green house.

Activities for the day proceeded as scheduled and included an hour's tour of the village; luncheon at the Congregational church; compliments of the Chelsea Chamber of Commerce; a tour of Chelsea Milling Co. and the Chrysler Proving Ground; a social hour at the home of Mr. and Mrs. Merle Barr where guests included present and former village officials; and the concluding entertainment—dinner at the Kiwanis club's weekly meeting. The dinner took place at the

## Mt. Morris Welcomes Chelsea

Chelsea Village President and Mrs. Robert Daniels and Councilman and Mrs. Stephen Clark left here at 6 a.m. Monday to go to Mt. Morris for Mayors' Exchange day.

It had been planned originally to meet for breakfast at a midway point with the Mt. Morris party heading for Chelsea to spend the day—Mayor and Mrs. James Callahan and Mr. and Mrs. William Slattery; however, the Mt. Morris party had notified Chelsea committees that they were unable to keep the appointment because of conflicting activity.

The four Chelseaites had breakfast at a Panton restaurant and reached Mt. Morris at 9 a.m.

Among those present to greet them on their arrival at the Mt. Morris city hall were Councilman Veryl Hoffmann and Police Chief Fred Sauria. Also included were John Chapman and Charles Baldwin, other city officials.

The Chelsea visitors were taken on a tour of the public works building, the public library, the water, police and fire department offices and the widely-publicized Mt. Morris high school, a circular glass and aluminum structure with the gymnasium at the center.

Interesting particularly to the Chelsea-people was the fact that a former Chelsea school superintendent, E. L. Clark, is now the superintendent of schools there. He joined the Chelsea and Mt. Morris touring party for the afternoon's tour of the Turnstedt Division plant of General Motors Corp., just outside Mt. Morris. The plant manufactures moldings and accessories for the automotive industry.

The plant, 40 acres in size and all under one roof, employs more than 6,000 people and is the outstanding feature of the town, the Chelsea group reported.

The Chelsea party had been served coffee at the City Hall on their arrival, at noon they were luncheon guests of the Kiwanis club, Dan Robinson, the club's president giving special welcome to President Daniels who is president of the Kiwanis Club of Chelsea.

In the evening Mr. and Mrs. Daniels and Mr. and Mrs. Clark were entertained at dinner at Wall's Restaurant, an attractive eating place in Mt. Morris. Here city officials presented Daniels with a gavel, engraved with the date and the information that it was given in observance of Michigan Week, 1963.

Mrs. Daniels and Mrs. Clark, accompanied by wives of several of the village officials, spent the afternoon at the Flint Cultural Center and had their noon lunch there, returning to join the men for the evening dinner program.

President Daniels mentioned an interesting "fire drill" demonstration which occurred during the group's morning visit to the city hall.

A surprise fire alarm was sounded. (Continued on page five)

WEATHER

	Min	Max	Precip
Monday, May 13	49	59	0.00
Tuesday, May 14	47	64	0.00
Wednesday, May 15	50	70	0.52
Thursday, May 16	59	71	Tr.
Friday, May 17	46	66	Tr.
Saturday, May 18	43	61	0.00
Sunday, May 19	42	61	0.03

# The Chelsea Standard

QUOTE

Know how to listen, and you will profit even from those who talk badly.

—Plutarch

SEVENTY-SECOND YEAR—No. 47 14 Pages This Week CHELSEA, MICHIGAN, THURSDAY, MAY 23, 1963 10c per Copy SUBSCRIPTION \$3.00 PER YEAR

## Jaycees Win 9 State Awards At Convention

Chelsea Jaycees last Saturday won nine awards at the Jaycees convention in Lansing. The awards were presented by the R & R chairman, Ron Harris, at the awards luncheon held at the Civic Center. The awards included five firsts, two seconds, and third and the "Project of the Year" award.

Jaycees won the awards for their outstanding Records and Recognition books. An R & R book is a book of written records along with outstanding evidence of the Jaycees' last year's projects. These R & R books are prepared in 12 different categories and are sent to the R & R chairman for his review. Chelsea's books were judged by Ed. Akin.

There are 100 Jaycee chapters in the state, and they are divided into four divisions according to population. Chelsea is in Division One, towns with a population up to 5,000. In this division there are chapters competing for 12 first place awards, one for each R & R category. Each book is judged by (Continued on page eight)

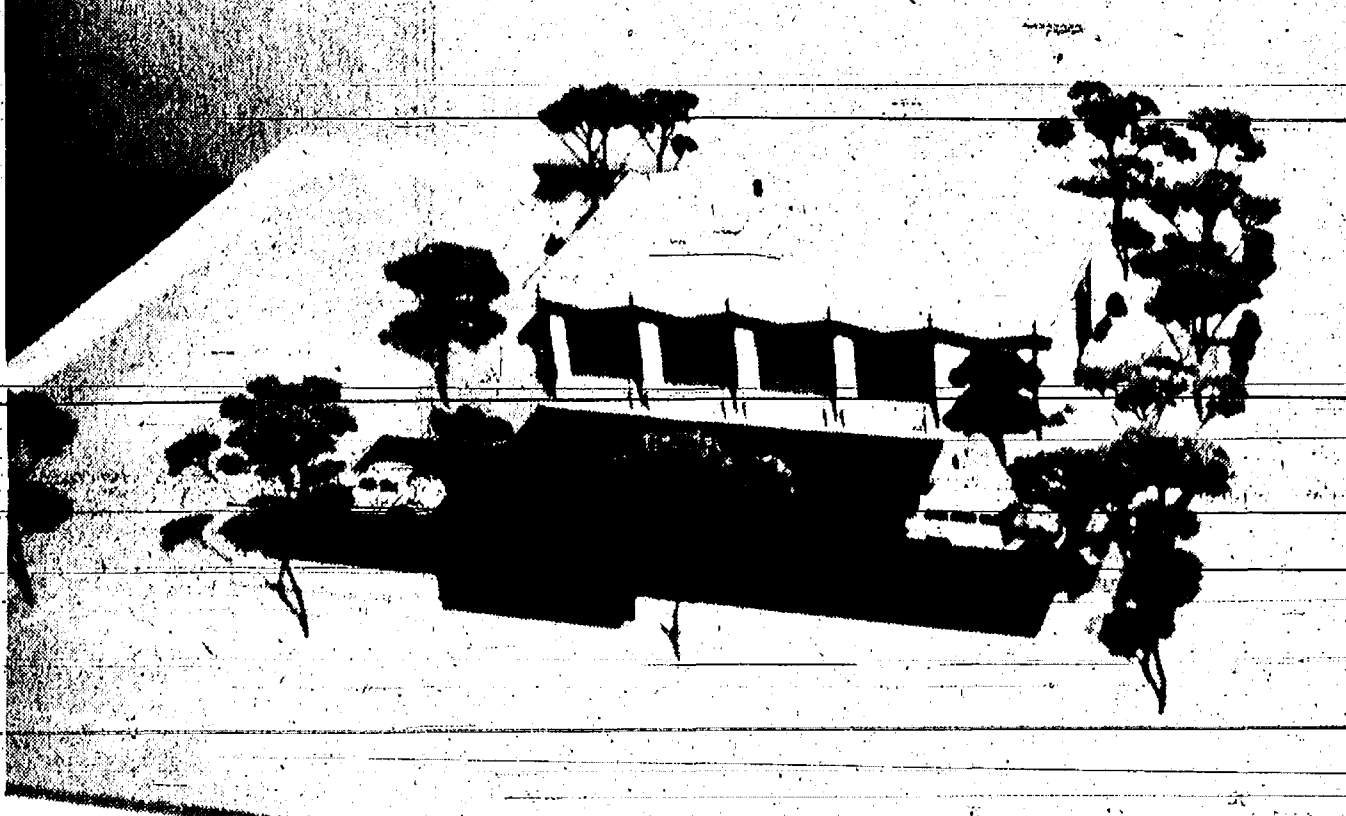
## Cancer Fund Campaign Nets \$1,501

At the official close of the extended April campaign for funds for the American Cancer Society, concluded here last week, a total of \$1,501.01 was contributed in the Chelsea community.

The report of the results of the Chelsea campaign was made by Mrs. Dudley Holmes, Chelsea chairman for the Washtenaw County Unit of the American Cancer Society. She mentioned that this was a 100 percent increase over the amount contributed here last year. Last year's total was \$741.50.

The Chelsea campaign was extended beyond the April 30 deadline originally set in order to permit volunteers to complete their solicitations.

Mrs. Holmes explained that money obtained in the campaign (Continued on page five)



NEW FIRE HALL—This is the architect's model of Chelsea's new fire station now under construction on Village-owned property west of Balmer's Brake Service, west of Middle St. Arthur Lindauer is the architect and Frederick Belser was awarded the contract for its construction. Upon completion, Chelsea's fire equipment, now housed in the fire barn portion of the Municipal Building, will be moved to the new fire hall.

## New Fire Hall Construction Plan Approved

George Winans, who is in charge of the Memorial Day observance as officer of the day, is urging all veterans of the community to plan to take part in the annual observance of remembering and honoring the "deceased servicemen of all wars." He pointed out that participation in the parade to the cemetery is an indication to relatives and friends of deceased veterans that the sacrifice of the lives of their soldier dead is being remembered and that the memory of those who died for their country is being honored.

Winans said wearing of uniforms is not necessary—participation in the memorial parade and the service at the cemetery are the important factors.

Boy Scouts, Girl Scouts, Cub Scouts, and other youth groups are invited to participate in the parade.

Construction of Chelsea's new fire station on West Middle St., west of Balmer's Brake Service, is to begin soon, it was announced this week.

Contractor for the job is Frederick Belser. Start of construction hinges on results of test borings to be made.

For many years past it has been the desire of the Chelsea Fire Department and the Village Council to have a fire station adequate for the needs of the community—a building of a size which will provide sufficient space for parking the fire trucks in proper position to get moving in the shortest possible time.

Much preliminary work has gone into planning for a new station, financing and Council members spending many hours in efforts to determine actual needs of the department and means of financing the project.

As long as four years ago, preliminary plans for a proposed fire station were drawn up by Arthur Lindauer, Chelsea architect. Revisions followed detailed study of the plans and the finalized plan was accepted by the Council two months ago and the contract for construction of the building was awarded to Belser at the May 7 meeting of the Council; total contract price being approximately \$23,000.

Additional work necessary—wiring, sanitary and storm sewers, grading, landscaping, etc.—will probably bring the total cost to \$27,000.

The present construction project will provide a basic building with many "frills" necessary to be added at a later date. Firemen themselves have indicated that they plan to do much of the interior finishing, paying for this with funds they have earned over a period of years from various money-raising projects.

When final grading of the property is eventually completed, there will be 28 individual public parking spaces available around the building in addition to the emergency parking spaces for firemen when they respond to fire alarms. Final plans call for eventual blacktopping of the parking area and providing adequate lighting.

The floor of the present fire department quarters in the Municipal Building is of wood construction; in spite of being reinforced several times with steel beams, there has been considerable apprehension that the weight of the three fire trucks will cause the floor to give way and drop the trucks into the basement.

In addition, because of insufficient space it is necessary to park (Continued on page five)

## Seat Belts Being Sold By Jaycees

George Winchester, Jr., chairman of the Chelsea Jaycees Seat Belt Clinic project, announced yesterday that the next two week-ends have been designated for the event here.

Saturday, May 25, and Sunday, May 26, 10 a.m. to 5 p.m. will be the two week-ends when the clinic will be held. The clinic will be held at the Chelsea Jaycees clubhouse, 1000 S. Main St.

The seat belts are installed at cost by Chelsea Jaycees members as a community service project. (Continued on page five)

## Paradome Given 'Product of Year' Plaque

A number of men from Chelsea attended the awards luncheon at the Economic Club of Detroit on Monday when Outdoor Fibre Products Co. was recognized for its "Paradome," named "Michigan Product of the Year."

Among those who attended were John Taylor and George Brigham who were prominently identified with development of the "Paradome." Taylor accepted the award at the luncheon on behalf of his company.

Others from the area at the luncheon included Frank Mahoney, Sidney Warner, Joseph Rudom, Thomas Gollubart, Peter Darrow, J. Vincent Burg, II, Harold Jones, Herman Deal, George A. Staffan, Harold Goodman, Dudley Holmes, P. G. Schaible, Jr., Lyle Christwell and Donald Bacon. Bacon is chairman of the board of Outdoor Fibre Products Co. and John Taylor is general manager.

In addition to the Chelsea "Product of the Year" award, the Economic club presented an achievement award to Gogebic county where \$100,000 was raised for community development; and to Ironwood for its product—Russell Bank potatoes.

Guest speaker at the Economic club awards luncheon was Peter J. Schrieth, publisher of the Curtis Publishing Company's "Holiday" magazine.

## Poppy Sale Slated Friday



PLANNING POPPY SALE—Mrs. Fred Klink, left, and Mrs. Paul Frayer are chairmen for the annual poppy sale which is scheduled to be held here tomorrow from 9 a.m. until 9 p.m. Mrs. Klink represents the Ladies' Auxiliary to Veterans of Foreign Wars, Post No. 4076 and Mrs. Frayer the Herbert J. McKune Unit No. 31, American Legion Auxiliary. Headquarters for the day's sale will be in the lobby of the Sylvan Hotel.

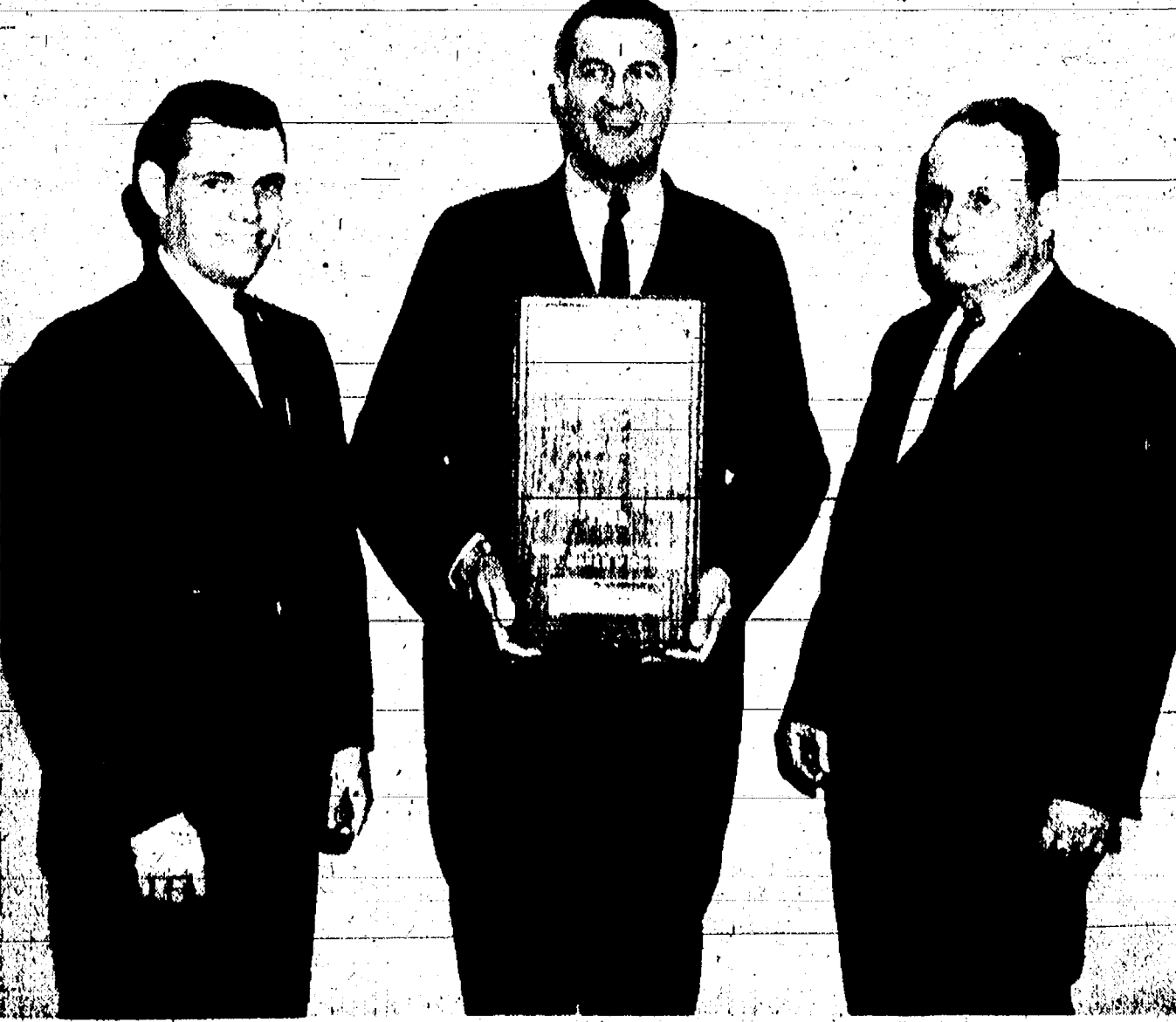
The two Chelsea service organizations—Veterans of Foreign Wars and American Legion—are again co-operating in the annual sale of Memorial Day poppies.

The Ladies Auxiliary and members of Post No. 4076 Veterans of Foreign Wars will conduct the annual Buddy Poppy Sale from 9 a.m. to 9 p.m. Friday, May 24, it was announced by Mrs. Fred Klink, Sr., (Geraldine), chairman for the Ladies Auxiliary.

Mrs. Klink says the VFW "Buddy" Poppies are made by disabled veterans only and are the organization's symbol to the world that "We Honor the Dead by Helping the Living." The sale of poppies is the only direct appeal to the public for aid to the hospitalized and needy veterans. Contributions made by the public in good faith are used in the same good faith by being placed in the Relief Fund to be held in trust for specific purposes only.

Needy service men and women or their dependents are given assistance through this fund. Hospitalized veterans are cared for and the widows and orphans of disabled or deceased veterans who reside at the VFW National Home at Eaton Rapids, are given aid through this fund.

By law of the organization, (Continued on page five)



PRODUCT AWARD—John Taylor, center, who was active in the development of the "Paradome" portable camping house which is featured throughout the state during Michigan Week as "Michigan Product of the Year," is shown with the plaque he received on behalf of Outdoor Fibre Products Co. at an awards luncheon Monday at the Economic Club of Detroit. At left is George A. Staffan, Chelsea's Michigan Week chairman and at right, Harold Jones, general manager of Central Fibre Products Co., where Outdoor Fibre Products operates its manufacturing business. Taylor also was recognized on behalf of his firm at Monday's Kiwanis club meeting held at the Masonic Hall with visiting officials from Mt. Morris present as guests in observance of Mayors' Exchange Day.



Established 1871 **The Chelsea Standard** Telephone GR 5-3531  
General Excellence Award by Michigan Press Association  
1951-1953-1956-1959-1960  
Walter P. Leonard—Editor and Publisher



Published every Thursday morning at 300 North Main Street, Chelsea, Mich., and second class postage paid at Chelsea, Mich., under the Act of March 3, 1879.

Subscription Rates (Payable in Advance):  
In Michigan: One Year \$3.00 Six Months \$1.75 Single Copies \$1.10  
Outside Michigan: One Year \$4.00 Six Months \$2.25 Single Copies \$1.10  
Service men or women, anywhere, 1 year \$3.00

NATIONAL EDITORIAL ASSOCIATION  
AMERICAN NEWSPAPER REPRESENTATIVES  
OFFICIAL PUBLICATION

## Successful Space Flight Restores American Confidence, Prestige

The splash-down of Astronaut L. Gordon Cooper last Wednesday only two miles from his pick-up ship the USS Kearsarge after a perfect blast-off through the atmosphere and 22 orbiting circuits of the earth and a descent under manual control is something for all of us to cheer about.

It marked not only an all-but-flawless space flight, and the longest of which there is any reliable record, but the successful completion by the United States of a series of three spectacular human adventures beyond the barrier of a life-supporting environment, and safely back again.

These excursions have doubtless proved to scientists many things of which we are only vaguely aware, if at all. But they have proved some other things that all of us can understand, and things we needed desperately to know.

We needed to be assured that the American breed has not run out, that this nation can still produce courage and competence of the highest order—and in the same package. We needed to know that our scientists, projecting their minds into outer space, still had their feet on the ground, that our engineers and technicians and craftsmen could design and fashion the equipment and devices to implement the demands of science. We needed to know these things to restore much of our lost prestige and doubts generated by the early successes of the Russians in space age efforts.

And we needed to know that we could still effectively co-ordinate the manifold and specialized skills, talents, capabilities and experience essential to a calculated chance of success in such an ambitious and unprecedented undertaking.

Demonstration of all these vital capabilities has been complete and satisfying. In addition, we have reassured ourselves and demonstrated to the world that we spare no thought, no effort, no expense nor deployment of manpower in devising and providing every conceivable safeguard to those who risk survival on the lift of a rocket, the functioning of literally thousands of pieces of equipment, of their own minds and bodies and of the invisible waves of electronic command signals and communications.

With this accomplishment and with this assurance in our hearts, now is a good time to take a long, hard look at what scientists believe to be necessary in further space investigation. Plans and equipment for Project Gemini—a two-man space probe, possibly of two weeks duration—are well advanced, and manned lunar flights are in the planning stage. Let us hope and pray that the program can continue with its present record of accomplishments and safety.

## Early Detection of Possible Cancer Could Save Thousands of Lives

The 1963 annual report of the American Cancer Society urges all Americans to seek periodic examinations in an effort to detect cancer while the disease is still in its "silent" stage.

The term "silent" is used to describe the malignant condition in undetectable form. That is, there are no symptoms which patients recognize as danger signals.

The American Cancer Society points out that among the thousands of people who die in the United States each year of six types of "silent" cancer, more than half could have been saved if the cancer had been detected early. Whereas the person affected may not recognize any danger signals, such as pains, lumps or bleeding, a doctor using special detection equipment can detect the growth of the co-called "silent" cancer.

Treatment under such conditions, before the cancer begins to spread, can be far more effective than after the disease has spread. Don't delay your examination until you are sure there must be something wrong. It's too late for most cancer when this time arrives.

## SCIO DRIVE-IN THEATRE

6588 Jackson Road, Ann Arbor—Phone Normandy 8-7083

THURS. - FRI. - SAT.

MAY 23-24-25

"IT STARTED WITH A KISS"

IN COLOR

With Debbie Reynolds, Glenn Ford, and Eva Gabor.

"THE LAST VOYAGE"

IN COLOR

With Robert Stack, Dorothy Malone, George Sanders.

ALSO: CARTOON

SUNDAY and MONDAY

MAY 26 - 27

"THE MIRACLE WORKER"

IN COLOR

With Anne Bancroft and Patty Duke.

"BIRDMAN OF ALCATRAZ"

IN COLOR

With Burt Lancaster, Thelma Ritter, and Karl Malden.

ALSO: CARTOON

TUES. - WED. - THURS.

MAY 28-29-30

"THE LION"

IN COLOR

With William Holden and Capucine.

"Dog of Flanders"

IN COLOR

With David Ladd and Donald Crisp.

ALSO: CARTOON

## SPRING HOUSE CLEANING AMBITIONS



## ★ MICHIGAN MIRROR ★

By Elmer E. White, Secretary, Michigan Press Association

### Infant Mortality

Continued emphasis on good prenatal care brought about another drop in the number of infant and maternal deaths during the past year, but infant immaturity and congenital malformations remained among the "Top 10" killers in Michigan during the period.

State Health Commissioner Albert E. Heustis noted diseases of the heart remained the leading cause of death in Michigan.

Various heart ailments accounted for approximately two-thirds of the increase in deaths from the previous year. Provisional reports compiled by the Health Department's statistics division showed the total number of deaths from all causes increased from 67,118 in 1961 to 69,743 last year. Heart disease accounted for 1,722 of the increase in deaths.

Heustis noted there were no changes in the ranking of the 10 leading causes of death. All showed slight increases, except congenital malformations which ranked eighth, and infant immaturity, ninth-ranked.

Maternal deaths, which were not actually in the top 10, dropped during the year from 75 to 55, while infant and fetal deaths from all causes showed a decline of 269 from 1961.

Other leading causes, behind the 27,068 heart disease deaths, were cancer, strokes, accidents, pneumonia and influenza, diabetes, arteriosclerosis, malformations, immaturity, and cirrhosis of the liver.

Blowing its own horn for taking hold of a good idea is the position where the Michigan Press Association finds itself.

Early this year Pierre Salinger, Presidential news secretary, noted at the association's annual meeting.

But Isaac Cornfielder did report he had said a statement by Senator Symington that the Navy has got enough canned hamburger in storage to last for 55 years and 2 months. Isaac allowed as how he wasn't complaining about this item on account of he knew this was our regular stockpiling procedure, but he was a little disturbed that they didn't mention no mustard and catchup stored to eat with it.

Ed Doolittle said, if it was all the same to Isaac, he'd rather not discuss hamburgers, mustard, catchup and such things. Ed reported he was putting on weight and his old lady was worried about his eating habits. He said she had took to talking about "kalo-ries" and things he ain't heard about till now. Ed claimed his old lady was the champion worrier in 7 states and he had always left the worrying up to her. He said it was his insurance agent's idea.

Anyhow, allowed Ed, his old lady has announced that from now on breakfast is getting cut in half. He told the fellows he didn't eat nothing much for breakfast but 2 eggs over light, some country sausage, a couple hot cakes with molasses, and 2 cups of coffee. Ed said his big meal come at night.

But from now on, he figured about all he'd get for breakfast was the weather report on radio and he had got so he couldn't understand that half the time. It used to be he'd claimed, if it was going to snow or rain the feller on the radio said so, but nowa-

days everything is somepon about "percipitation" that don't mean nothing to him one way or the other.

Clem Webster agreed with Ed that things like calories and percipitation was bad and ought to be agin the law. Bug Hookum was lamenting that our language is getting so fancy it's hard for a one-gallus feller to understand it. Bug said he recollected reading, when Liz Taylor and Eddie Fisher got hitched, the piece said they was "joined in holy wedlock." In the old days, claimed Bug, the papers just said so-and-so took a wife. Of course, allowed Bug, everybody knows it was the other way round, but editors in them days was kind to the wimmin folks.

Zeke Grubb was of the opinion that editors ought to keep matters a little more consistent. For instance, he said, when Liz and Eddie split up the papers had ought to report that they was "disjoined in unholy divorce." Anytime, Mister Editor, you want Zeke to come to town and git out your paper, just let him know.

Yours truly,  
Uncle Lew.

Michigan's pickle patch covered 25,000 acres last year. It was enough to place our state first in national acreage and production. About 1,376 million eggs were produced in 1962—enough for a big omelet! That's only 60 percent of eggs needed by our state's 8 million consumers.

Model Parents  
Leadership, consistency, patience, understanding and perception are attributes needed in one special variety of people. It may well be that you fall into this category.

According to Dr. Troy Stearns of the Michigan State University College of Education, every parent needs to have great quantities of these attributes.

## Uncle Lew from Lima Says:

### DEAR-MISTER EDITOR:

The fellows at the country store Saturday night was going a little easy on the Congress for a change and was devoting the program mostly to personal matters.

But Isaac Cornfielder did report he had said a statement by Senator Symington that the Navy has got enough canned hamburger in storage to last for 55 years and 2 months. Isaac allowed as how he wasn't complaining about this item on account of he knew this was our regular stockpiling procedure, but he was a little disturbed that they didn't mention no mustard and catchup stored to eat with it.

Ed Doolittle said, if it was all the same to Isaac, he'd rather not discuss hamburgers, mustard, catchup and such things. Ed reported he was putting on weight and his old lady was worried about his eating habits. He said she had took to talking about "kalo-ries" and things he ain't heard about till now. Ed claimed his old lady was the champion worrier in 7 states and he had always left the worrying up to her. He said it was his insurance agent's idea.

Anyhow, allowed Ed, his old lady has announced that from now on breakfast is getting cut in half. He told the fellows he didn't eat nothing much for breakfast but 2 eggs over light, some country sausage, a couple hot cakes with molasses, and 2 cups of coffee. Ed said his big meal come at night.

But from now on, he figured about all he'd get for breakfast was the weather report on radio and he had got so he couldn't understand that half the time. It used to be he'd claimed, if it was going to snow or rain the feller on the radio said so, but nowa-

days everything is somepon about "percipitation" that don't mean nothing to him one way or the other.

Clem Webster agreed with Ed that things like calories and percipitation was bad and ought to be agin the law. Bug Hookum was lamenting that our language is getting so fancy it's hard for a one-gallus feller to understand it. Bug said he recollected reading, when Liz Taylor and Eddie Fisher got hitched, the piece said they was "joined in holy wedlock." In the old days, claimed Bug, the papers just said so-and-so took a wife. Of course, allowed Bug, everybody knows it was the other way round, but editors in them days was kind to the wimmin folks.

Zeke Grubb was of the opinion that editors ought to keep matters a little more consistent. For instance, he said, when Liz and Eddie split up the papers had ought to report that they was "disjoined in unholy divorce." Anytime, Mister Editor, you want Zeke to come to town and git out your paper, just let him know.

Yours truly,  
Uncle Lew.

Michigan's pickle patch covered 25,000 acres last year. It was enough to place our state first in national acreage and production. About 1,376 million eggs were produced in 1962—enough for a big omelet! That's only 60 percent of eggs needed by our state's 8 million consumers.

Model Parents  
Leadership, consistency, patience, understanding and perception are attributes needed in one special variety of people. It may well be that you fall into this category.

According to Dr. Troy Stearns of the Michigan State University College of Education, every parent needs to have great quantities of these attributes.

Michigan's pickle patch covered 25,000 acres last year. It was enough to place our state first in national acreage and production. About 1,376 million eggs were produced in 1962—enough for a big omelet! That's only 60 percent of eggs needed by our state's 8 million consumers.

Model Parents  
Leadership, consistency, patience, understanding and perception are attributes needed in one special variety of people. It may well be that you fall into this category.

## JUST REMINISCING

Items Taken from the Files of The Chelsea Standard

### 4 Years Ago...

Thursday, May 28, 1954—

Duane Quatt, now a graduate student at the University of Michigan, won \$800 for "40 Poems and the Great American Novel" in the annual Avery and Jule Hopwood contest.

Mrs. Robert Quatt, 40, has been named chairman of the 1958 Chelsea Community Club fund-raising committee.

A representative of the State Health Department informed the Village Council Monday evening the Health Department will no longer tolerate the inadequate facilities of the Chelsea sewage treatment plant.

In the 14 Years Ago column (Thursday May 31, 1945): On Monday, Governor Harry F. Kelly appointed James R. Breakley, Jr., Ypsilanti attorney and former music teacher, as Washtenaw County Circuit Judge to fill the vacancy caused by the death of Judge George W. Sample.

In the 24 Years Ago column (May 28, 1954): Dr. Walter Koels of the Bureau of Fisheries headquarters at the University of Michigan, will be a member of the National Geographic Society expedition to north and west of Greenland this summer. The expedition is headed by Donald MacMillan, famous explorer.

In the 34 Years Ago column (Thursday May 30, 1920): Approximately 300 people attended the second annual Sylvan Center school reunion Sunday. By special request, Schuyler Foster, a former teacher in the district, sang "Song of the Sea."

Forty-one Chelsea seniors, accompanied by Supt. and Mrs. E. L. Clark and Miss Evelyn Cornman, will leave here by bus at 3 a.m. tomorrow for the senior trip to Washington. Supt. Clark will dispatch a night letter each evening telling of the activities of the party. The letter will be on display in Winans window.

In the 24 Years Ago column (June 1, 1954): Solid rural mail delivery for Washtenaw county began today. The Chelsea postoffice has five routes.

In the 34 Years Ago column (May 30, 1920): Work is in progress on the foundation for the foundry at the Stove Works and construction will be pushed as fast as possible.

The death rate from uterine cancer has dropped 50 percent in 25 years. According to the American Cancer Society, much of this is due to the fact that more and more women are having an annual "Pap" test for uterine cancer. This is a simple procedure by which uterine cancer can be detected early enough to be cured.

Michigan leads the nation in production of seedling evergreens.

Michigan's pickle patch covered 25,000 acres last year. It was enough to place our state first in national acreage and production. About 1,376 million eggs were produced in 1962—enough for a big omelet! That's only 60 percent of eggs needed by our state's 8 million consumers.

Model Parents  
Leadership, consistency, patience, understanding and perception are attributes needed in one special variety of people. It may well be that you fall into this category.

According to Dr. Troy Stearns of the Michigan State University College of Education, every parent needs to have great quantities of these attributes.

Michigan's pickle patch covered 25,000 acres last year. It was enough to place our state first in national acreage and production. About 1,376 million eggs were produced in 1962—enough for a big omelet! That's only 60 percent of eggs needed by our state's 8 million consumers.

Model Parents  
Leadership, consistency, patience, understanding and perception are attributes needed in one special variety of people. It may well be that you fall into this category.

According to Dr. Troy Stearns of the Michigan State University College of Education, every parent needs to have great quantities of these attributes.

Michigan's pickle patch covered 25,000 acres last year. It was enough to place our state first in national acreage and production. About 1,376 million eggs were produced in 1962—enough for a big omelet! That's only 60 percent of eggs needed by our state's 8 million consumers.

Model Parents  
Leadership, consistency, patience, understanding and perception are attributes needed in one special variety of people. It may well be that you fall into this category.

According to Dr. Troy Stearns of the Michigan State University College of Education, every parent needs to have great quantities of these attributes.

Michigan's pickle patch covered 25,000 acres last year. It was enough to place our state first in national acreage and production. About 1,376 million eggs were produced in 1962—enough for a big omelet! That's only 60 percent of eggs needed by our state's 8 million consumers.

Model Parents  
Leadership, consistency, patience, understanding and perception are attributes needed in one special variety of people. It may well be that you fall into this category.

### 24 Years Ago...

Thursday, May 25, 1934—

The three Protestant churches of Chelsea will unite in their annual Community Memorial service Sunday. The service will be held at St. Paul's church.

The public school facility for next year, kindergarten through high school, respectively, are listed as follows: Evelyn Sprague, Myrtle Aukley, Mrs. E. R. Dancy, Eva Hutchinson, Lada Lindner, Achmidt, Ida Brown, Alice Canfield, Dorothy Hannigan, Robert Dunsen, Florence Efty, Mabel Pawlow, Josephine Renski, Charles Cameron, Roy Wallis, Vernon Downing, Albert Johnson.

At the Decoration Day exercises Tuesday in the public school auditorium, Albert Doll, Jr., will recite "In Flanders Field" and Henrietta Beach will give the response; Duane Rowe will give the "Gettysburg Address" and Ransom Armstrong will read "Logan's Orders."

In the 24 Years Ago column (May 28, 1954): Dr. Walter Koels of the Bureau of Fisheries headquarters at the University of Michigan, will be a member of the National Geographic Society expedition to north and west of Greenland this summer. The expedition is headed by Donald MacMillan, famous explorer.

In the 34 Years Ago column (Thursday May 30, 1920): Approximately 300 people attended the second annual Sylvan Center school reunion Sunday. By special request, Schuyler Foster, a former teacher in the district, sang "Song of the Sea."

Forty-one Chelsea seniors, accompanied by Supt. and Mrs. E. L. Clark and Miss Evelyn Cornman, will leave here by bus at 3 a.m. tomorrow for the senior trip to Washington. Supt. Clark will dispatch a night letter each evening telling of the activities of the party. The letter will be on display in Winans window.

In the 24 Years Ago column (June 1, 1954): Solid rural mail delivery for Washtenaw county began today. The Chelsea postoffice has five routes.

In the 34 Years Ago column (May 30, 1920): Work is in progress on the foundation for the foundry at the Stove Works and construction will be pushed as fast as possible.

The death rate from uterine cancer has dropped 50 percent in 25 years. According to the American Cancer Society, much of this is due to the fact that more and more women are having an annual "Pap" test for uterine cancer. This is a simple procedure by which uterine cancer can be detected early enough to be cured.

Michigan leads the nation in production of seedling evergreens.

Michigan's pickle patch covered 25,000 acres last year. It was enough to place our state first in national acreage and production. About 1,376 million eggs were produced in 1962—enough for a big omelet! That's only 60 percent of eggs needed by our state's 8 million consumers.

Model Parents  
Leadership, consistency, patience, understanding and perception are attributes needed in one special variety of people. It may well be that you fall into this category.

According to Dr. Troy Stearns of the Michigan State University College of Education, every parent needs to have great quantities of these attributes.

Michigan's pickle patch covered 25,000 acres last year. It was enough to place our state first in national acreage and production. About 1,376 million eggs were produced in 1962—enough for a big omelet! That's only 60 percent of eggs needed by our state's 8 million consumers.

Model Parents  
Leadership, consistency, patience, understanding and perception are attributes needed in one special variety of people. It may well be that you fall into this category.

According to Dr. Troy Stearns of the Michigan State University College of Education, every parent needs to have great quantities of these attributes.

Michigan's pickle patch covered 25,000 acres last year. It was enough to place our state first in national acreage and production. About 1,376 million eggs were produced in 1962—enough for a big omelet! That's only 60 percent of eggs needed by our state's 8 million consumers.

Model Parents  
Leadership, consistency, patience, understanding and perception are attributes needed in one special variety of people. It may well be that you fall into this category.

According to Dr. Troy Stearns of the Michigan State University College of Education, every parent needs to have great quantities of these attributes.

Michigan's pickle patch covered 25,000 acres last year. It was enough to place our state first in national acreage and production. About 1,376 million eggs were produced in 1962—enough for a big omelet! That's only 60 percent of eggs needed by our state's 8 million consumers.

Model Parents  
Leadership, consistency, patience, understanding and perception are attributes needed in one special variety of people. It may well be that you fall into this category.

According to Dr. Troy Stearns of the Michigan State University College of Education, every parent needs to have great quantities of these attributes.

Michigan's pickle patch covered 25,000 acres last year. It was enough to place our state first in national acreage and production. About 1,376 million eggs were produced in 1962—enough for a big omelet! That's only 60 percent of eggs needed by our state's 8 million consumers.

## Mayor's Party Are Guests of Kiwanis Club

Fifty members and a number of guests were present Monday evening for a dinner meeting of the Kiwanis club, held at the Nassau Hall.

Special guests at the dinner were Mayor and Mrs. James N. Call and Mr. and Mrs. William St. of Mt. Morris who had spent the day in Chelsea in observation of the "Parade of the Mayors" exchange day. Mayor Morris expressed appreciation for the hospitality shown here and spoke briefly about home community.

John Taylor, general manager of Outdoor Fibre Products, manufacturers of the "Parade" which won the state award "Michigan Product of the Year" also was a guest.

Vice-President Wallace W. presided at the Kiwanis club meeting in the absence of the president, Robert Daniels, who was in Morris in his capacity as the village president for Exchange Mayors' Day.

In addition to the Mt. Morris people, guests at the meeting were Mr. and Mrs. George W. Taylor, Thomas Maxwell, Mrs. J. V. Burg, II, Mr. and Mrs. S. Barr, Jr., Mr. and Mrs. L. Chapman, Mrs. Thomas S. Wallace Wood and Mrs. Paul Bollinger.

Grand Hotel on Mackinac Island has the world's longest porch.

## Chelsea Theatre

PHONE GR 9-2211  
CHELSEA, MICHIGAN

FRI. SAT. MAY 24  
STRAIGHT FROM TODAY'S HEADLINES.

The true story of the incredible "freedom tunnel"

ESCAPE FROM EAST BERLIN

ALSO: SHORT - CARTOON

SUN. MON. MAY 26

DEBBIE REYNOLDS

"MY SIX LOVES"

CLIFF ROBERTSON - DAVID JANSSEN

WORLD NEWS - CARTOON



A Chevy II wagon looks this big when you load it up



and this big when you gas it up

That, in the eyes of most Chevy II wagon owners, is just about the size of it. A king-size appetite for cargo. But a dainty one for gas. And this, we hardly need add, is just the kind of wagon we planned it to be. Taut and trim as it is on the outside, we went to great lengths to keep it BIG where a wagon should be BIG. The load platform extends a full nine feet from the back of the front seat to the tip of the lowered tailgate.

And for all the pepper we packed into that 6-cylinder engine (there's also a choice of an even thrifter 4 in most models), we were careful to keep it simple, easy to service—and a real stickler on economy. Feel in a traveling mood? Well—happy coincidence—this is the time of year your Chevrolet dealer feels in his most generous trading mood. Looks like it's high time you two got together.

CHECK HIS TNT DEALS ON CHEVROLET, CHEVY II, CORVAIR AND CORVETTE

SPAULDING CHEVROLET SALES & SERVICE  
CHELSEA, MICHIGAN



## Waterloo Golf Course Ready To Open

Waterloo area residents are looking forward to a new project—a nine-hole golf course—on a 100-acre tract at Trist Rd. and Waterloo township. The course, which is approximately three miles north of Waterloo, is owned by the Pauls and is being developed by the Waterloo Golf Club. The course will be open to members only; however, to accommodate tourists, visitors to the nearby Waterloo Recreation Area and others for whom full membership is impractical, the owners are offering some memberships on a monthly basis. A starter house is under construction at the entrance on the corner of Trist and Monckel Rds. The new golf club will be officially opened on Memorial Day.

## For Sealy's 82nd Anniversary Sale

SEALY CHANGED THE COVER AND YOU SAVE \$20

Made with the identical features of Sealy's famous \$59.95 Health Flex mattress ... but with a sturdy new cover

Now for only **\$39.88**

Huge Sealy purchasing power plus stepped-up production for this Anniversary Sale allows you to buy Health Flex quality at a first-time-over \$20-off. Quantities are limited however, so come in today and save!

• Hundreds of tempered steel coils  
• Smooth, button-free sleeping surface  
• New, extra-durable 8-oz. woven slings cover

**Easy terms.**

## THIS OFFER IS LIMITED

We are unable to buy any more of these fine Sealy Mattresses at this low price.

## Big Savings on Nationally-Known Furniture

**CLEARANCE OF FINE FURNITURE**

We are overstocked and need room for new merchandise. **COME IN AND SAVE NOW!**

**MEABON'S TV, FURNITURE & APPLIANCES**

170 M-52 CHELSEA PHONE GR 5-5191



**JOHN EISENBEISER**, who is a senior at Michigan State University, is shown at right as he received recognition for his participation on the Michigan State Livestock Judging team. The recognition award was presented by Robert Hines, extension specialist and coach of the judging team, at an Ag. Honors assembly which is a newly-instituted honors program. Eisenbeiser is co-chairman of the annual Spring Round-Up, sponsored by the Animal Husbandry Department at MSU. This big event of the year for ag students is scheduled for Saturday, May 25, and includes the annual honors banquet in the evening. The day's activities will include judging contests and other competition. Eisenbeiser is the son of Mr. and Mrs. Warren Eisenbeiser. He graduated from Chelsea High school where he was prominent in football and other extra-curricular activities.

## Salem Grove To Dedicate Newly Redecorated Church

Salem Grove Methodist church plans to dedicate its newly redecorated and renovated church on Sunday, June 2, during the regular worship hour at 11:15 a.m.

A special thanks was voted to Paul Peltes, committee chairman, who gave of his time and effort in getting materials and in the general planning.

An invitation is being extended to the public to attend the dedication and the pot-luck dinner which will be served in the church dining room immediately following the service. The Women's Society of Christian Service will furnish ham, potatoes, rolls and coffee. Other hot dishes, salads or desserts are suggested to be brought in. Everyone should bring their own table service.

Members of the building committee included Chairman, Paul Peltes, Mrs. Austin Artz, Dean Schweinfurth, Mrs. Glenn Rentschler, and Mrs. Alda Lehman.

New oak floors were laid throughout and finished.

One of the changes made in the pews of the church is the rearranging of the pews so as to provide for a center aisle. The center aisle continues to the altar area and both have been covered with new red carpeting.

The old wainscoting around the sides has been covered with a paneling also. A new wrought-iron railing has been added to the stairwell leading to the basement.

Fifteen new padded pews are being installed. These pews were contributed as memorials by members of the church and other interested persons in the surrounding community.

An "In Memoriam" plaque will be installed bearing the names of the donors of the pews who have designated that they be a memorial. All of the work, recently completed, was done by the men of the church who gave freely of their time and talent and spent long hours to finish this worthwhile project.

## Union Local Elections Scheduled

Amalgamated Local No. 437, JAW-CIO, is holding its election of officers today at the Union Hall, 113 South Main St. official voting hours are 6:30 a.m. until 7 p.m.

Candidates are listed as follows: Harvey Lixey and Homer Conley, president; Harold Salyer and Mac Packard, vice-president; Western Allen and Mitchell Picklesimer, financial secretary; Charles (Pat) Patrick and Stanley Policht, recording secretary; Hager Large, Bruce Hopkins, Elwood McGlothen and K. R. McMannis, trustee for two years, (three to be elected); Arnel Minix and Charles Fletcher, sergeant-at-arms; and Fred Conley and Harold (Hank) Musolf, guide.

In case of a tie, a run-off election will be held June 5.

The election committee includes Ishamel Picklesimer, chairman; Donald Houle, Al Mahar, Robert Gladstone and Ed Green.

Chelsea Products Unit of Amalgamated Local No. 437, JAW-CIO, held its election of officers Friday, May 10.

Elected were Elwood McGlothen, chairman; Stanley Policht, committeeman; Edward Baczinski, steward, first shift; Robert Kaiser, steward, second shift; Norman O'Connor, recording secretary; Adelbert Reinecke, sergeant-at-arms; Cecil Herman, guide.

Chelsea Manufacturing Corp. Unit has scheduled its annual election for Wednesday, May 29, when a chairman, vice chairman and committee are to be named.

The election will take place at the Union Hall from 2:30 until 4:30 p.m.

Candidates are Gene Brunett and Fred Conley, chairman; Dick Menge, Albert Stone and Don Walshans, vice-chairman (one to be elected); Buddy Hunter and Leroy Grob, committeemen.

Mrs. Daniel Maroney and children, Kathy and Mike, and Mrs. Paul Maroney, left yesterday morning for Sistersville, W. Va., where they will spend a week as guests of the latter's sister, Miss Bernice Alexander. Mrs. Paul Maroney will attend the high school alumni banquet as a member of the class which is observing its 45th anniversary.

## Legion Auxiliary Mother-Daughter Banquet Enjoyed

A total of 43 mothers and daughters attended the Mother-Daughter banquet held at the American Legion Home at Cavanaugh Lake Tuesday, May 14 at 6:30 p.m.

A very interesting program consisting of piano solos, tap dancing and poems was put on by the younger auxiliary members. Gift plants were given to mothers and daughters in various categories.

The banquet was sponsored by Herbert J. McKune Unit No. 31, American Legion Auxiliary.

Bigamists are just average men who have the wrong number.

## Chalky surface to paint?

Relax, new Minn-Aqua will adhere perfectly to excessively chalky surfaces. It hides better, spreads further and outlasts ordinary or "bargain" paints for extra years of distinctive beauty and protection.

ONE COAT is all you need on repaintable surfaces in good condition. No special primer necessary. No need for special thinners or solvents either, clean brushes and rollers in minutes with warm, soapy water.

A NEW EXTERIOR PAINT, Minn-Aqua is made with a combination linseed oil and water base. This means you'll enjoy the beauty and durability of conventional linseed oil paints, plus the application ease and convenience of latex paints.

How long since you've seen your home as others see it? See us for new painting pleasure... Minn-Aqua.

**MINNESOTA PAINTS**

**Finkbeiner Lumber Co.**

Quality Materials and Service

PHONE CHELSEA GR 9-3881  
On Old US-12  
Just Off S. Main St.  
MARTIN STEINBACH, Owner

## Live easy in live lively summer SPORTSWEAR

Live the life you love in our outdoor-ables for sun and fun! We've all the great fashion looks of the season in our new collection of summer sportswear. Come choose from a wide, wonderful array of tops, pants and skirts in easy-care fabrics of every color.

Just Arrived! **\$3.98 to \$4.98**



## SLACKS COOL CRISP Carefree!

ALSO **Walking Shorts**

**\$2.98 to \$9.98**

Now is the time to summerize your slack and short wardrobe while assortments are great. Sizes 28 to 42.

## Cool! Good Looking! SHIRTS!

For Men and Boys **\$1.98 to \$3.98**

Also Dress Shirts made to our rigid specifications. **\$2.98 and \$3.98**

## SHOES for ROMPING through SUMMER

Quality Footwear for the Whole Family at Modest Prices.

**Williams SHOE**

**ANDERSON'S**

**SPRING SALE**

WE ARE VOLUME SELLING USED CARS AT NEW LOW PRICES IN ORDER TO KEEP PAGE WITH RECORD NEW CAR SALES

'60 FORD Ranch Wagon \$999	'58 FORD Custom 300 4-dr. \$599	'59 MERCURY Convertible \$1,195
'59 FORD Custom 300 2-dr. \$899	'57 FORD 4-door \$699	'56 FORD 2-dr. \$495
'59 CHEV 4-dr. Wagon \$999	'57 FORD 2-door \$599	'54 FORD \$150
'59 FORD 2-dr. \$899	'55 CHEV Wagon \$499	'57 DODGE \$100

1955 JEEP 4-WHEEL DRIVE PICK-UP

<b>SPECIALS</b>	<b>FREE</b>	<b>SPECIALS</b>
'55 FORD 4-Dr. Wagon \$99	Bring in this ad and enter your name for drawing of car-top camping outfit worth \$198.00 to be Given Away FREE on JUNE 1st	'55 OLDS 2-Door \$99
'58 RAMBLER 4-Dr. Wagon, No Rust \$499		'57 PLYMOUTH 4-Dr. No Rust \$399

**EASY FINANCING ARRANGED**

**NO OBLIGATION!**

**A-1 3-WAY 25 MONTHS GUARANTEE**

**DEMONSTRATORS**

1963 Galaxie 500 XL	NEW CAR GUARANTEE	1963 Galaxie 500 4-Dr.
All Vinyl Bucket Seats, Cruise-O-Matic, Power Steering, 220 hp. V-8, Radio with Special Stereoscopic Sound System. White Tires and Wire Wheel Covers.	<b>SAVE \$ \$ \$</b>	All Vinyl Trim, 220 hp. V-8 Cruise-O-Matic, Power Steering, Push Button Radio, White Tires, 2-Tone Paint, Wheel Covers
Only \$2990	<b>2 BIG LOTS</b>	Only \$2790

Corner of Orchard & S. Main and 222 S. Main St.

**PALMER MOTOR SALES, INC.**

Phone GR 5-3281 or GR 5-3271 "OVER 50 YEARS OF SERVICE" CHELSEA, MICH.



Just  
Phone  
GR 5-3581

# BUY SELL TRADE RENT HIRE HELP

read the Want Ads

## WANT ADS

## The Chelsea Standard

## WANT AD RATES

PAID IN ADVANCE—All regular advertisements, 50 cents for 25 words per line. Each insertion, 25 cents. Each figure as a word. For more than 25 words add 2 cents per word for each insertion. "Bids" in or for number add 50 extra per insertion.

CHARGE RATES—Same as cash in advance, with 10 cents bookkeeping charge if not paid before 5 p.m. Three-day preceding publication. Pay in advance, read cash or stamps and save 10 cents.

CARDS OF THANKS or MEMORIALS—Single paragraph style, \$1.00 per insertion for 50 words or less; 50 cents per word beyond 50 words. Minimum, 1 inch.

DISPLAY WANT ADS—Rate, \$1.10 per column inch single column width only. 5-point and 10-point light type only. No borders or lock-ups type.

COPY DEADLINE—5 p.m. Tuesday, week of publication.

TRAVEL TRAILERS—13-ft. and 16-ft. 50x55 ft. trailers. Orlin R. Jones Trailer Sales, Gregory, Mich. Phone LE-2855. 45tf

AGRICULTURAL LIME and FERTILIZER SPREADING. Call GR 9-2341. 45tf

LEONARD EDER. 45tf

COME to the Junior High chorus opera, "Tom Sawyer" at Chelsea High school auditorium Friday or Saturday, May 24-25, 8 p.m. Tickets at door, 25 cents. 47

WANTED—Standing timber. We specialize in soft maple and elm. Launstein Lumber Co., Mason, Mich. Contact Kern Real Estate, Chelsea 475-8563. 47

FOR SALE—4-bedroom home located on 90x172 ft. lot in heart of village. Automatic gas heat, new 2-car garage. For particulars ph. GR 5-8205 or 479-3541. 44tf

Look To Grinnell's In '62

New Spinnet Pianos from \$489  
New Hammond Organs (2 manual) from \$995  
Used Spinets at \$295  
Rebuilt Grand from \$595  
Assorted Uprights from \$69.50

GRINNELL'S

823 South Main Ann Arbor  
Phone NO 2-5667 80tf

WANTED TO RENT—In Chelsea School District before June 15, house with at least three bedrooms. References furnished. Call GR 9-4542. 44tf

ANYONE FOUND LOOTING or trespassing on the property at 18975 Island Park Rd. at West Lake, will be prosecuted. Signed: Eva Vogel, owner. 39tf

FOR REAL DOLLAR SAVINGS. Be sure and see us before you buy any new or used car. Palmer Motor Sales, Inc. Your Ford Dealer for over 50 years. 25tf

Formal Wear Headquarters

RENTALS

Foster's Men's Wear

FOR SALE—25-hp. Evinrude outboard motor. In good condition. \$100. GR 9-5201. 47

FOR SALE—40 acres with 6-room home, small barn and tool shed. To settle estate. Walter Trinkle, adm. GR 5-5044. 47

FOR SALE—Davenport and chair, clothes bars, curtain stretchers, new express wagon, rocking chair, porcelain tub on wheels. GR 9-1931. 47

FOR SALE—1962 Ford Mustang outboard motor in good condition \$75. Phone GR 9-3351. 47

Gulf Oil Products

Fuel Oil and Gasoline.

ALBER OIL CO.

8025 Ann Arbor St.  
Dexter, Mich.  
Call 426-8113 or 426-8517 25tf

## WANT ADS

SAVE YOUR useable discards for Jaycees Rummage Sale July 5-6. For pick-up call GR 5-3271. GR 5-8361 or GR 9-3111. 45tf

FOR SALE—North Elm School Area. RADIANT HEATED HOME. Alum, sided, fully insulated. 2-bedroom, full bath and lavatory. Youngstown kitchen, natural heatilator fireplace, comb. dining room and solarium with heated 1-car garage, screens, storms, awnings, screened patio and separate 14x22 tool house. By owner. Will take \$10,000 to move. Shown by appt. only. Tel. GR 5-5181. 45tf

BUY OR SELL COINS—Also have coin supplies. Lake's Coin Center, 121 Van Buren, Chelsea. Call 475-8980. 26

CAN TAKE CARE of one additional ironing and shirts. Also have one more kitchen to give to good home, free. Ph. 475-8981. 48

FOR SALE

BLUE SPRUCE

Junipers—Fitzers and Andorra Yew—Cuspidates and Capitata Arborvitae—Globe and Pyramidal Red Barberry—Cottoncaneaster

WALTER BEUTLER

405 Freer Road 45tf

WORK WANTED BY 17-year-old boys for the summer. Some farm experience. Phone GR 9-4511. 48

NURSE employed at University Hospital, Ann Arbor, needs transportation. Working hours: 8 to 4:30 p.m. Phone GR 5-5331. 48

Experienced Typist Needed

Dictaphone Experience required. Only qualified typist need apply. Write Box M-16, Care of Chelsea Standard. 45tf

FOR SALE—1957 Buick Special in very good condition. Excellent motor. Low mileage. Very reasonable. Also, blue formal. Phone 475-3891. 47

Sweet Potato Plants

40c dozen  
\$1.75 a hundred

Chelsea Greenhouse

3010 Lingene Rd., Ph. GR 9-6071 40

WANTED—Reliable high school boy or man to mow large lawn and help with yard work. Phone 475-8955 after 5 p.m. 47

FOR RENT—Apartment. Two-room furnished. All utilities. Private entrance, garage, \$65 per month. Phone 475-8958 after 5 p.m. 47

HORSE FARM

40 acres adjacent to large state-owned recreation area near Chelsea. Very attractive older home and good barn. Ideal site for woods. Near M-52 and North Territorial Rd. Owner leaving state has authorized us to sell for only \$25,000. Terms. 25tf

Call MR. KOWALSKI

NO 2-3249  
Evenings: HI 9-2321

McKercher—Realtor

202 East Huron, Ann Arbor 47

FOR SALE—Girl's 24-inch bicycle in very good condition. \$15. Call GR 9-3351. 47

Call Grinnell's

MAIL ORDER SERVICE

Thirty LP Albums  
America's Top Sellers

Regular \$3.98 Only \$2.77

Regular \$4.98 Only \$3.77

Regular \$5.98 Only \$4.77

By Mail or Come To

GRINNELL'S

323 South Main Ann Arbor

Phone NO 2-5667 80tf

## WANT ADS

FOR SALE—4-bedroom year around lake-front home Cavanaugh Lake. Call John Pierson, GR 5-8881 after 8 p.m. 45tf

IT WILL PAY YOU \$-to drive out and look at our used car selection. Ample parking space. Chelsea Motors, Inc. GR 5-5011. 16tf

RUMMAGE SALE sponsored by Women's Guild, Francisco E. & R. Church, at Municipal Bldg., Grass Lake, May 23, 24 & 25, 8 a.m.-5 p.m. 47

OPERETTA Friday and Saturday May 24-25, 8 p.m., at Chelsea High school auditorium. Tom Sawyer in three acts by Junior High Chorus. Admission 25 cents. 47

FOR SALE

2-APT. HOME near down town Chelsea.

HOME at Sugar Loaf Lake, reasonably priced.

LOTS at Crooked Lake.

Listings wanted.

FOR RENT—Very nice 2-bedroom downstairs apartment, 1 mile out.

SCRIPPER REAL ESTATE

Minnie Leffer, Broker  
Phone 479-0794 47tf

STRAWBERRY PLANTS for sale, state inspected. F. A. Ewald, 20337 Old US-12, next to Tokheim factory, Phone GR 9-3804 any day except Saturday. 45

JAYCEES RUMMAGE SALE July 5 and 6. If you have items to contribute call any of the following for pick-up. GR 5-3271, GR 5-8361 or GR 9-3111. 46tf

CLIFF'S

WELDING SERVICE

624 1/2 North Main St.  
(Behind Production Machining)

Also, complete portable equipment. Welding, cutting, brazing, pipe thawing.

Phone  
475-8731 or GR 5-8252 45tf

FOR SALE—Boy's 24-inch bicycle, baby stroller, child's roll top desk. Phone 479-4704. 47

FOR SALE—High school books for freshman, sophomore and junior. Phone 475-8917. 47

WORK WANTED—18-yr.-old boy wants summer work. Some farm experience. Phone GR 5-8347. 48

Attention Farmers

Have all varieties of FUNK'S G Seed Corn on hand

May be picked up or delivered

Harold Trinkle & Sons

9970 Trinkle Rd. GR 9-2462 60

WANTED TO BUY—Top quality hay; also old and rained-on hay, straw. We pay cash. Write Art Callari Hay Co., Upper Sandusky, Ohio, or phone our representative, Jackson State 4-0028. 17tf

PAINTING

Have your spring painting and decorating done by a man with 25 years experience. Spray or brush, inside or out, large or small.

Phone 479-6057 43tf

FOR SALE—Roto-tiller, less than 1-year old, but Chandler. PH. GR 5-5601. 47

FOR SALE—Kenmore Visu-Matic Wringer washer. Automatic pump. Used only a few times. Call 475-8905 after 6. 48

FARM LOANS!

Buy land, livestock, refinance.

Free Appraisals - Fast Service

5 1/2% interest

Federal Land Bank

ROBERT HALL, MGR.

2221 Jackson Ave.  
Telephone NO 2-5189  
Ann Arbor, Mich. 27tf

FOR SALE—Fiberglass speedboat, with windshield, steering wheel, controls, and 30 hp electric start Evinrude Lark motor. \$450. 1016 Sugar Loaf Lake, Gr 9-4401. 48

FOR SALE—Child's toy tractor in good condition. Also two boys' sport coats, sizes 4 and 6. Call 475-8079. 47

FOR SALE—2-bedroom house two miles from Chelsea on one acre of land. Reasonable down payment. V. R. Walling, Broker, Phone HA 6-5211 or HA 6-9633. 48

REAL ESTATE

FOR SALE

1 Ranch-type home nearly new.

2 Bedroom Home, modern kitchen, full basement, gas heat.

New 3 Bedroom Brick Home on 1 acre. Attached garage. Full basement. 1 mile out. See this one.

Both Small and Large Farms.

Home at Sugar Loaf. Possession at once.

KERN REAL ESTATE

616 South Main St.  
Phone 475-8562

Please, we need all kinds of listings 48tf



"You're not as fussy as my wife—she always looks in the Standard Want Ads for a decorator!"

## WANT ADS

FOR RENT—Apartment over downtown store. Furnished. All utilities. \$65 per month. Days call GR 9-3851; evenings, GR 9-5948. 47

HIGH SCHOOL STUDENT wants work Saturdays; full time after school closes. Robert Schneider, GR 9-2873. 47

BULLDOZING

Prompt Service - Quality Work

DICK KISS

6045 Werkner Rd., Chelsea, Mich.  
Phone 475-8446

If no answer call 479-2791 38tf

STUD SERVICE. Training and breaking horses. Also riding equipment for sale. E. Hinderer, 8200 Shield Rd., Dexter, 426-4283. 47

HELP WANTED—Registered nurses and licensed practical nurses. Full time and part time positions available immediately. Psychiatric unit in Ann Arbor area. Any shift rotations. Suitable salary and liberal employee benefits. Write Personnel Director, Bldg. 1127, Ann Arbor, Mich. 48

TOP SOIL

Fill Dirt and Gravel

Phone HA 6-8650 47

SINGER AUTOMATIC DIAL ZIG ZAG sewing machine in beautiful cabinet. Makes buttonholes, hems, sews buttons, all by dialing. Only \$6.10 per month or \$50 total balance due. Write Credit Manager, Box P28, care of Chelsea Standard. 47

H & M UPHOLSTERY SHOP

Free estimate, Pickup & Delivery  
305 S. Main St.

PHONE GR 5-8575 or GR 9-4882  
Chelsea, Mich. 32tf

FOR SALE

INCOME PROPERTY

2-Family Apt. Home, 2 bedrooms each apartment. These are large apartments in the heart of Chelsea.

Store Building on West Middle St.

Home on South Main with income building.

A flourishing business on 1 acre, plus apartment.

KERN REAL ESTATE

616 South Main  
Phone 475-8562

Plus several building lots close to Chelsea. 48tf

CLOGGED

SEWER

Reynolds Sewer Service

We Clean Sewers Without Digging  
Drains Cleaned Electrically  
FREE ESTIMATES  
2-YEAR GUARANTEE  
Phone Ann Arbor NO 2-5277  
"Sewer Cleaning Is Our Business—Not a Sideline" 38tf

FOR SALE

EIGHT-ROOM HOUSE and large 6 miles west on Cavanaugh Lake Rd. Leads modernizing, otherwise sound. Price \$50,000 cash.

TWO-BEDROOM CHELSEA HOME in excellent condition. Modern kitchen, basement, gas furnace, attached garage, landscaped yard. Price: \$10,500.

BUILDING LOT, 200x200, on Freer Rd.

50-ACRES level, vacant land, fronts on service road. Excellent place to build.

MODERN, 2-bedroom, lake home, sleeps six. Oil heat, utility room, garage. Price \$8,500. \$1,500 down, owner will finance balance.

MODERN COUNTRY HOME on all-weather road. One bedroom down and two on second floor. Modern kitchen and bath, dining room, large living room, enclosed porch, large screened front porch, stoker furnace, 2-car garage, workshop, maple shade. Lot 100x200. Large garden. Price: \$11,000.

LIST YOUR FARMS WITH R. D. MILLER,

HAVE BUYERS WAITING.

R. D. MILLER

REAL ESTATE BROKER

Office: 15775 Cavanaugh Lake Road  
Post Office Box 388  
Chelsea, Michigan

Phone: GR 9-5892

## WANT ADS

FEMALE HELP WANTED—Mannpower, Inc., has immediate need for experienced stenographers, typists and office workers for short term temporary assignments in Chelsea and surrounding area. Apply 212 South Fourth Ave., Ann Arbor. 48

FOR SALE—Briggs & Stratton riding mower, 24-inch cut. Call 479-6548. 47

G. G. HOPPER

Painting & Decorating  
Building Contractors

Phone GR 5-5551  
Gregory 498-2148 71tf

WILL ACCEPT \$4 per month on Singer sewing machine. Makes buttonholes, blind hems with zig zag; Like new. Total balance \$34.56. Write Box P28, care of Chelsea Standard. 47

For the Best In

POLE BUILDINGS

Be sure to see "SMILEY"

Call or Write

JOHN LIVERMORE

Gregory, ALPINE 8-2887 60tf

FOR RENT—2nd floor furnished apt. for adults. Combination living and bedroom, kitchen, ocean, closet. Private entrance. PH. GR 9-1602. 47

Septic Tanks

And Drain Fields

INSTALLED TO COUNTY CODE SPECIFICATIONS

Septic tanks from 800 gal. to 2,000 gal. available for prompt installation.

HILLTOP PLUMBING

BOB SHEARS

201 S. Main Phone 479-8851 25tf

FOR SALE—Year around completely modern 99-ft. lakefront home on Crooked Lake, including separate rental unit. Minimum \$3,000 down. Call NO 8-8818. 47tf

CLOGGED

SEWER

Reynolds Sewer Service

We Clean Sewers Without Digging  
Drains Cleaned Electrically  
FREE ESTIMATES  
2-YEAR GUARANTEE  
Phone Ann Arbor NO 2-5277  
"Sewer Cleaning Is Our Business—Not a Sideline" 38tf

Real Estate For Sale

APPROX. 4 ACRES with one 3 bedroom and one 2 bedroom house. (Live in one and rent the other.) Has almost new barn and large chicken house. On blacktop road. Near Waterloo recreation land. Perfect for horses. Would consider selling houses separately. Terms. 48tf

THANK YOU

Because it is impossible for me at this time to contact each of you—my wonderfully kind friends, relatives, neighbors and former classmates—to express my appreciation for the generous gifts I have received and for the many kindnesses extended to my family and me during my illness, I wish by this means to say with deepest gratitude, "Thank you all, most sincerely,"

Bruce Hoffman.

THANK YOU

Because it is impossible for me at this time to contact each of you—my wonderfully kind friends, relatives, neighbors and former classmates—to express my appreciation for the generous gifts I have received and for the many kindnesses extended to my family and me during my illness, I wish by this means to say with deepest gratitude, "Thank you all, most sincerely,"

Bruce Hoffman.

THANK YOU

Because it is impossible for me at this time to contact each of you—my wonderfully kind friends, relatives, neighbors and former classmates—to express my appreciation for the generous gifts I have received and for the many kindnesses extended to my family and me during my illness, I wish by this means to say with deepest gratitude, "Thank you all, most sincerely,"

Bruce Hoffman.

THANK YOU

Because it is impossible for me at this time to contact each of you—my wonderfully kind friends, relatives, neighbors and former classmates—to express my appreciation for the generous gifts I have received and for the many kindnesses extended to my family and me during my illness, I wish by this means to say with deepest gratitude, "Thank you all, most sincerely,"

Bruce Hoffman.

THANK YOU

Because it is impossible for me at this time to contact each of you



**Cancer Society Campaign Receives \$1,500 in Chelsea**  
(Continued from page one)  
designated for cancer research to assist cancer patients. Two Chelsea patients are now benefitting from such assistance and, if from cancer patient here is in need of help—for medicine, bed equipment, nursing aids, etc.—she is asked to make their needs known to Mrs. Holmes and she will see that the necessary assistance is forthcoming.  
Listed by Mrs. Holmes as the people who assisted with the campaign are Mrs. Robert Wagner, Mrs. Paul Mann, Mrs. Walter Schrader, Jr., Mrs. Daniel Maroney, Mrs. Franklin Gee, Mrs. Carner Slocum, Mrs. Paul Prager, Mrs. Earl Tison, Mrs. Robert Elisele, Mrs. Leslie Blagobajer, Mrs. Irwin Young, Mrs. Leonard Eder, Mrs. H. C. Powers.  
The list continues with Mrs. Joan Kipfmiller, Mrs. Richard Bradbury, Mrs. Carroll Ordway, Mrs. Charles Curtis, Rose Curtis, Mrs. Duane Downer, Mrs. Elwood Keizer, Mrs. George Heydlauff, Mrs. David Stifter, Mrs. Wilbur Werner, Mrs. Robert Robbins, Mrs. Andy Blackwell, Mrs. Richard Smith and Mrs. J. V. Burg, Jr.  
Mrs. Holmes said all those who assisted in the campaign—the solicitors and those who contributed, including factories and taverns—have a share in its success.

**Personal Notes**

Gordon Miller of Amarillo, Tex., is spending several days with his uncle and aunt, Dr. and Mrs. Charles Miller.  
Dr. and Mrs. L. J. Paul spent last week on a vacation trip during which they visited various points of interest including Washington, D.C.  
Mrs. Robert Freysinger, who entered St. Joseph Mercy Hospital, Ann Arbor, on April 30, was still a patient there this week; however, she said she is hoping to be able to come home soon.

**Mrs. D. Maroney Will Head JCC Auxiliary Sixth District**

The Michigan state Jaycee Auxiliary convention, held Friday and Saturday at the Jack Tar Hotel in Lansing, featured election of officers and presentation of special awards.  
Mrs. Daniel Maroney, who is state vice-president for District VI, of which the Chelsea auxiliary is a part, was state awards chairman and in that capacity had the honor and pleasure of presenting the grand award—Auxiliary of the Year—to the Tecumseh Jaycee Auxiliary which is in her district.  
The award was accepted on behalf of the Tecumseh Auxiliary by Mrs. Jan Creswell, the outgoing president of the Auxiliary.  
District VI of the Auxiliary also includes Chelsea, Adrian, Blissfield, Carleton, Clinton, Dundee, Milan, Monroe and Saline.  
Mrs. Maroney, who was president of the Chelsea Auxiliary the past year, was elected state vice-president for the Sixth District at the annual district meeting held March 20 at Milan. She begins the duties of state vice-president as her husband is concluding his term as state vice-president of District V which is composed of Jaycee groups of Ypsilanti, Ann Arbor, Manchester, Howell, Milan, Saline and Chelsea.  
Awards were presented at an awards luncheon for Auxiliary members Saturday afternoon.  
Saturday evening Mrs. Maroney accompanied her husband to the joint Jaycee and Auxiliary banquet where Governor Romney was the principal speaker. He commended Jaycees for their community spirit and for assuming various civic responsibilities.  
Among those from Chelsea who attended the jointly-timed conventions are Mr. and Mrs. Daniel Maroney, Mr. and Mrs. Elton Guenther, Mr. and Mrs. Merle Leach, Mrs. Eugene Shoemaker and Mrs. Donald Bush.  
Mrs. Maroney was among the state officers installed at the Auxiliary's special installation ceremony at the convention.  
State officers are Mrs. Doris Brohm of Berrien Springs, president; Mrs. Pat Bechtel of Wayne, secretary; and Mrs. Willa Joe Bush of Alma, treasurer.

**New Fire Hall**

(Continued from page one)

one truck in front of another; if for some mechanical reason the truck parked nearest the front should fail to start, the truck would have to be pushed out of the way before the second truck could get out. Such a delay, in case of a big fire, could be the deciding factor in saving a building or having the fire develop into a real disaster.

The front truck did fail to start several weeks ago because of a battery failure; however, the fire for which the firemen were called out happened to be a minor blaze but the incident forcibly pointed up the danger of the situation.

Councils of several years past have done what they could to further the eventual construction of a new fire station and for a number of years have included budgeting toward new equipment and a fire hall fund. Until this year, however, it has not been possible to realize sufficient funds to proceed with actual construction plans. Due to the completion of the present fire hall, it was considered too hazardous to delay construction any longer; after discussing possible ways and means of financing the project it was finally decided to allocate the fire department building and equipment fund savings, along with money from the 1963 budget, providing an appropriation of \$24,000. This has made it possible to begin construction at once.

**Seat Belt Clinic**

(Continued from page one)

This is the second annual seat belt project; last year they installed a total of 1,200 of the seat belts—a project for which they received a first-place award at the state Jaycee convention last week-end. Reports show that Chelsea's seat belt clinic last year was the largest in the nation sponsored by Jaycee groups in their community service health and safety programs.  
Repeating last year's pattern, the seat belts will be installed at the Stop & Shop supermarket parking lot.  
Jaycees have attended workshop sessions and are proficient in installation procedures. Those who wish to have the belts installed may come in at any time during the two week-end clinics, Winchester said.

**Road Commission Employees Safety Awards Presented**

Among 38 employees of the Washtenaw County Road Commission who were presented service award certificates at the annual awards dinner Friday, May 17, are a number from this area. Friday's dinner was held at the American Legion Home in Saline.

Edward Walker of Chelsea, received a gift for 25 years of service; Ralph Grossman, also of Chelsea, at retiree with 17 years of service, received a gift; and awards in the form of certificates were presented for service periods ranging from five to 40 years.

The 40-year award went to Louis Schanz of Ann Arbor.

Raymond Schumacher of Dexter was recognized for 35 years of service; LeRoy and Vernon Sathowite of Chelsea, 30 years each; John Stoffor of Chelsea, 16 years; Carner Slocum of Chelsea, Malcolm Blakely and Ferdinand Kopinski of Dexter, 10 years each.

The list of area people honored is concluded with the following who received five-year award certificates: Robert Farrell, Janet Forsee, James Gardener, Erwin Schardt, all of Dexter; and Oobie Amstrong, Lloyd Schneider, Charles Miller and James Bennett, all of Chelsea.

**LYNDON EXTENSION CLUB**

Three Washtenaw County Home Extension Council members were guests at the May 18 meeting of Lyndon Extension club—Mrs. LeRoy Feldkamp of Lima township, Mrs. Fred Wheeler of Webster township, and Mrs. Carl Loser of North Lake.

Mrs. Feldkamp was accompanied by her son and there were three other children present, as well as one guest and 19 club members.

The meeting was opened with the Extension Women's Creed, recited in unison, followed by a silent prayer for Astronaut L. Gordon Cooper who was in orbit that day.

In keeping with the month, a Maypole salad was served at tables decorated with spring flowers.

It was announced that a card party will be held at the Lyndon Town Hall May 25; also that at the invitation of Miss Nina Greening the group will meet for a potluck picnic June 20 at the Greening home at Clear Lake.

Co-hostesses for the 12:30 p.m. picnic dinner are to be Mrs. Guy Barton, Mrs. Lawrence Shanahan, Mrs. Nattie Hall, Mrs. Charles Fuhrmann and Mrs. Samuel Whitman.

**Memorial Day**

(Continued from page one)

Scouts, Brownies, members of men's and women's service organizations and anyone wishing to honor the war dead should plan to be in the parade scheduled for Thursday, May 30, at 10 a.m.

Children with decorated bicycles or tricycles and those who will be marching are also invited.

Winans said, too, that "Chelsea's fine school bands" will be marching in the parade and will take part in the brief ceremonies at the cemetery.

Assembly for the parade will begin at 9 a.m. at the Municipal parking lot on Park St. with J. Vincent Burg, II, as sergeant-at-arms.  
Because of street work being done on East Middle St., Winans said, the parade route will probably need to be changed—possibly directly east on Park St. to Madison and then north to the cemetery.

A special reminder is given about display of the American flags along the parade route; particularly, also, that proper respect be shown by onlookers as the American flag passes—placing the right hand over the heart and standing at attention.

**Visit to Mt. Morris**

(Continued from page one)

ed, bringing firemen to their stations in record time. They were given a fictitious address where they were told the "fire" was located and Daniels and Clark invited to ride on the front seat of the trucks—one in each of the two trucks responding. After the trucks had gone some distance, they were called by radio advising them to return to the station—that it was a deliberate false alarm planned for the benefit of the Mayor's Exchange day visitors. The firemen, themselves, had been unaware that it was not a real alarm.

In last week's Michigan Week story—the names of a former councilman and his wife, Mr. and Mrs. Harvey Lixey, was inadvertently used instead of that of Councilman and Mrs. Stephen Clark, as being the ones who were to accompany President and Mrs. Daniels to Mt. Morris.

**Poppy Sale**

(Continued from page one)

money in the Relief Fund cannot be used for general expenses, Mrs. Klink explained. Every dollar donated by the public in the annual sale of VFW "Buddy" poppies is used for the welfare of veterans.

All "Buddy" poppies sold in Michigan are made by disabled veterans who are residents of the Michigan Veterans Facility located in Grand Rapids.

"Wear a Poppy" is the slogan for the annual American Legion Poppy Sale, according to the Auxiliary's chairman, Mrs. Paul Prager. She said the Auxiliary's volunteers who assist in the sale customarily report a feeling of satisfaction gained from helping with the program which "honors the dead while assisting the living."

Money dropped into the coin boxes carried by the sales volunteers in exchange for the crepe paper poppies made by disabled veterans, goes directly to finance the welfare activities of the American Legion and Auxiliary.

All funds are used for aid to disabled veterans, their families

and families of deceased service men.

In announcing the annual poppy sale, Mrs. Prager commented on the wholehearted support given the sale each year and said, "I am sure all of us will consider it a privilege to again wear a poppy this year on Poppy Day."

American Legion volunteers will be selling the poppies all day tomorrow (Friday) from 9 a.m. until 9 p.m.

**IN MEMORY**

In loving memory of our Virginia, Clairice, Gerald and Linda Smith who passed away 11 years ago, May 24 and 25.  
Little did we know when dawned that morning, the sorrow that day would bring. The end was sudden, the shock severe to part with ones we loved so dear. Death leaves a void no one can heal.

They live with us in memory still, not just today, but always will. To think we did not say goodbye will always bring regrets. But hearts that loved them best of all are hearts that won't forget.

Sadly missed by Mother, Daddy and family.

**THIS COUPON IS WORTH \$1.25**  
On Purchase of 1 Bushel  
**SUPER GROSS SEED CORN**  
By Presenting This Coupon to  
**ROBERT HELLER, DEALER**  
1610 Guenther Rd., Chelsea  
Offer good until May 29, 1963.

**BURGHARDT FUNERAL HOME**  
Phone GR 5-4141  
or GR 5-5141  
24-HOUR AMBULANCE SERVICE  
214 E. MIDDLE ST. CHELSEA

**—SPECIALS—**  
ALL FLAVORS MILLER'S  
**Ice Cream . 1/2 gal. 59c**  
MILLER'S CREAM AND EGG  
**Ice Cream . 1/2 gal. 69c**  
SWIFT'S ORIOLE  
**Bacon . . . 1-lb. pkg. 39c**  
PKG. OF 8 HOLSUM HOT DOG OR HAMBURG  
**Buns . . . 2 pkgs. 39c**  
PILLSBURY ANGEL FOOD  
**Cake Mix . . . . . 39c**  
**KUSTERER'S**  
FOOD MARKET  
DIAL GR 9-3331 WE DELIVER

**BANK AUTO LOANS ARE BEST!**  
JUST MARRIED  
ANY TRIP YOU MAKE will be more pleasant, if the car you drive is financed the Bank Way—economically, conveniently and with local people.

**3 1/2% on Savings 4% on Time Certificates**  
Book Accts. of Deposit for 1 Yr.  
**CHELSEA STATE BANK**  
Member Federal Reserve System Member Federal Deposit Insurance Corp.

**Charm Chats**  
By:  
**TODDY and FRAN**  
MAKE-BELIEVE HAIRDOS  
There's conspiracy going on in the coiffure world. False hairpieces are being used as "go-betweens" to disguise daytime casualness, transforming even saucy "young-boy" brief cuts into majestic, formal styles of towering tresses. But there's one maverick. The sleek "little nothing" hairdos still have a loyal following that upholds the understated chic of head-hugging hairdos, very Chanel-ish in impact.  
Take time now for your new summer "do." Warm weather calls for special hair arrangements with comfort and convenience in mind.  
**MAGIC MIRROR BEAUTY SALON**  
Phone 665-0816  
6585 Jackson Rd. Ann Arbor

**W. E. FARRELL SHEET METAL**  
INDUSTRIAL AND GENERAL SHEET METAL WORK  
115 WEST MIDDLE STREET—CHELSEA  
PHONE GREENWOOD 9-2011

**SPRING HARDWARE-PAINT SALE ENDS SATURDAY**

**YARD-MAN 3-SPEED SELF-PROPELLED SAFETY CLUTCH 21" ROTARY MOWER**  
Self-propelling allows complete control of rate of forward speed—has 3-speed selector knob for choice of walking pace or mower momentum through light, medium or heavy grass independent of blade speed. EXCLUSIVE SAFETY CLUTCH stops blade fast, releases blade drive for easy starting, safer operation. ENGINE—Briggs and Stratton 3-H.P. Cycle gas with Easy-Spin recoil starting system. Guaranteed full year. Crankshaft guaranteed against breaking or bending for the life of the mower.  
CONTROLS—Finger-rip throttle mounted on handle operator choke, start, go and stop. 7 Quick-Set height adjustments from 1 1/2" to 3". Recessed, wide-tread 8 1/2" Y-tread wheels allow trim to within 1/2" on front and side.  
**\$154.95**  
FREE \$9.95 GRASS CATCHER  
With the purchase of a Famous Yard-Man Self-Propelled 21" Mower during this sale.

**COUPON DELUXE 22" SPREADER**  
REG. \$16.95  
**\$10.88**  
WITH THIS COUPON  
AND 2 BAGS 22 POUNDS OR LARGER  
OF ANY VAUGHAN'S Lawn Care Products  
# FERTILIZER  
# WEED KILLER  
# GRASS KILLER  
SALE PRICE WITHOUT COUPON - \$14.88  
**COUPON**

**RV COUPON RV**  
21" PUSH TYPE YARD-MAN ROTARY MOWER  
Same mower as above except for the self-propelled feature.  
**\$109.95**

**SALE PRICE \$11.88**  
AUTOMATIC REFLECTOR TOASTER

**Arvin FOLDING WEB ALUMINUM CHAIR**  
Full size. Automatic Soft-Lok. Matches chaise or rocker.  
REG. \$6.49 WITH **\$3.88 COUPON**  
SALE PRICE WITHOUT COUPON \$4.88

**PLASTIC SPRINKLING CAN**  
REG. \$2.29 **\$1.66**

**RV COUPON RV**  
FULL 1 1/4" THICK Redwood 6-Ft. LAWN TABLE & BENCHES  
REG. \$27.79 **\$22.88** IN CARTON

**Johnson's NEW! SPRAY SHINE CARNU**  
Shines the new car color back. Large 14 oz. can. Spray it on it's fast. Wipe it off it's easy.  
REG. \$1.39 WITH **89c COUPON**  
SALE PRICE WITHOUT COUPON \$1.19

**UNION TOOL BOX**  
REG. \$7.90 **\$5.66**

**VAUGHAN'S WESTERN GROWN ROSE BUSHES**  
Every bush of good quality with vigorous roots. Large magnificent roses (40 to 50 petals). Packed in heavy-duty bag with illustrated planting instructions.  
ONE BUSH WITH COUPON  
REG. \$1.19 **66c**  
ADDITIONAL BUSHES 89c

**Liberty TACKLE-UTILITY BOX**  
REG. \$5.95 **\$4.44**

**S-K Lectrolite 27-Piece SOCKET SET**  
REG. \$29.95 **\$19.95**

**3-CUBIC FOOT LAWN GARDEN CART**  
SALE PRICE **\$6.44**

**EXCEL LAWN FOOD**  
Clean • Fast-Acting • No Burn • No Filler • Lightweight • High Analysis • Popular 20-10-10 Formula  
Covers 5,000 sq. ft. **\$2.66**

**CAL-DAK FOLDING LAUNDRY CART**  
REG. \$4.59 **\$3.44**

**GILMORE SPRAY LOCK HOSE NOZZLE**  
REG. \$1.30 **99c**  
SWAN FULL-FLOW HOSE NOZZLE  
REG. \$1.49 **49c**

**MANY OTHER ITEMS AT SALE PRICES**  
**Shakespeare SPINNING ROD AND REEL COMBINATION**  
REG. \$14.90 **\$9.88**

**MERKEL BROTHERS**





# GIRL SCOUTS

**TROOP 98—**  
Members of Girl Scout Troop 98 met Wednesday May 15.

They went for a walk to Schneider Estate property on South Main St., and played games. They played "Compass" (a game like "Simon Says") and "Partners Tag." After the games they walked back to their meeting rooms where refreshments were served.

May 20, the girls went to the YWCA in Ann Arbor. The mothers who went with them are Mrs. Poertner, Mrs. Carlson, Mrs. Sutter, Mrs. Trib and Mrs. Parker. They swam for an hour and afterwards had refreshments.

Sandy Knoll, scribe.

**TROOP 51—**  
Several games were played at the May 15 meeting of Girl Scout Troop 51, at Pierce Park.

Following this the girls made plans for their next campout.

Nancy Picklesimer, scribe.

## Brownies...

**TROOP 247—**  
Beth Sanborn and Jackie Murphy brought treats for Tuesday's meeting of Brownie Troop 247. The meeting was held at the home of Mrs. Robert Taylor on Chandler St.

The girls went to Pierce Park where they played games, held races, and learned a new game called "Red Lion," taught them by Karen Johnson.

The meeting was closed with taps and formation of a "friendship circle."

Dorice Bussler, scribe.

**TROOP 606—**  
Brownies of Troop 606, at their meeting Thursday, made tote bags out of plastic cleanser bottles. Refreshments were brought by Lynn Jacobs because it was her birthday.

Affretta Harrison, scribe.

About 177,000 Americans will be saved from cancer this year. However, the American Cancer Society says that about 88,000 cancer patients will probably die in 1968 who might have been saved by earlier detection and treatment. Have a health checkup once a year as a safeguard against death from cancer.

## Serviceman's Corner

### Pvt. Richard Schauls Arrives in Italy for Advanced Training

Amy Pvt. Richard L. Schauls after graduating from the Southeastern Signal School, Fort Gordon, Ga., as a Communications Specialist, spent a week with his parents, Mr. and Mrs. Richard E. Schauls enroute to Fort Dix, N.J., where he will be assigned.

Word was received by his parents May 20 that Pvt. Schauls arrived in Vicenza, Italy where he will receive advanced training. Pvt. Schauls' present address is Pvt. Richard L. Schauls, U. S. 55739134, HG 2 HQ Co. 1st Mst. Comd. APO 221, New York, N. Y.

## Industrial Displays Seen Wednesday

"Our Livelihood Day" observed throughout the state yesterday in connection with Michigan Week, was a cool, gloomy day weather-wise, marred by Chelso's observance which featured exhibits and displays in the downtown area as a salute to industries of the community.

Outdoor Fibre Products Co. "Paradise" the camping house which was named Michigan Product of the Year, was set up on Park St., along with other products in an area roped off and closed to traffic.

Main street from Park to Middle was lined with new cars, business and industrial vehicles and an on-the-spot portable radio broadcasting unit was parked at the corner of Main and Middle St. throughout the day.

If snowed early in the day, possibly breaking some sort of record for late-season snow.

**Jehovah's Witnesses Attending Conference**

The Chelsea congregation of Jehovah's Witnesses will be in Marshall for three days of special ministerial training May 24-26. The three-day convention in Marshall is designed to help the gathering delegates to become better equipped ministers. There will be Bible lectures, demonstrations and discussions; the public is invited to attend.

## Parking Area May Become Available

William Bott, executive director of the Ann Arbor Chamber of Commerce for the past seven years, was the guest speaker Tuesday evening at the Chelsea Chamber of Commerce meeting at the Congregational church.

As previously announced, his talk centered on the theme that it requires enthusiasm to build a community. The topic was especially appropriate during Michigan Week, when all communities aim to "put their best foot forward."

Principal business at the meeting was a report submitted by the C. of C. parking lot committee—F.W. Merkel and Robert Barlow. They stated that an additional downtown parking lot site is under consideration; it would accommodate 30 cars. If the site should be selected it could be available within 30 days, the committee stated.

A ladies' night picnic which is to be an annual feature of the Chamber of Commerce, has been set for July 17, the location to be announced.

The picnic replaces the former ladies' night Christmas party which has been discontinued because of conflict with other Christmas activities and holiday store hours.

**FROG ROUNDUP**  
Buffalo, N.Y. — A stowaways is trained to make her passengers comfortable. But frogs hopping around the plane posed a problem. However, the efficient Miss Dotie Pratt helped round them up and return them to their cage. The frogs were being shipped to a laboratory located in Albany.

## Wheat Growers Cast Decisive 'No' Vote on Program

Only 55 percent of the 3,280 wheat growers in the county eligible to vote did so in Tuesday's national wheat referendum; those who did vote, however, overwhelmingly voted a decisive "No."

Total ballots cast in Washtenaw county were listed at 1,814 with only 314 voting "Yes" and the remaining 1,500 "No."

In the state, the wheat plan was rejected 4-1 and in the nation, incomplete returns show that those in favor of the wheat controls was only 47.7 percent of the total. Approval required a 66.7 percent affirmative vote.

This was the first time in the 13 times a wheat-control program was voted on that the proposal was rejected.

## Junior High Chorus To Present Operetta

Tomorrow and Saturday, May 24-25, are the dates for the Junior High Chorus operetta "Tom Sawyer." David Sanborn, the school vocal music director reminds Chelsea area people.

There is a large cast of characters with Jan Koenigster as student director and Joa Dietle as piano accompanist.

The three-act operetta opens with the familiar action of Tom outwitting his friends so that they do his job of whitewashing his Aunt Polly's fence.

Jan Hibbs has the leading role as Tom Sawyer.

The State Prison of Southern Michigan is the largest walled prison in the world.

## Junior-Senior Prom Held Saturday Night

Mike Schrader and Lynn Harvey, co-chairmen for the Junior-Senior prom last Saturday were credited with leading their fellow Junior classmates in the preparation and presentation of a "very successful prom."

All class members participated in some phase of the work but the group designated as the committee included Nancy Riley, Janice Wood, Mary Melinger, Warren Porath, Marcia Bertke, Gayle Schauls, Richard Reed, Joyce Mahar, Linda Killham, Laura Weir and Roberta Devine.

Sophomores did the serving of the banquet which was attended by School Board members and their wives, high school faculty members and their wives or husbands, and members of the junior and senior classes.

The Seventh Day Adventists established their national headquarters in Battle Creek in 1855 and it's still there.

## Cafeteria Menu

Menus for the final week of operation of Chelsea High school cafeteria for the current school year are as follows, including some form of bread and milk.

Monday, May 27—Pizza burgers, German potato salad, apple cobbler.

Tuesday, May 28—Beef biscuit roll, gravy, whole kernel corn, fruit cocktail, orange juice.

Wednesday, May 29—Fried chicken, potatoes, pickled beets, applesauce.

Thursday, May 30—No school.

Friday, May 31—Macaroni and cheese, tuna or nippy cheese sandwich, peas, cherry cobbler.

senior classes; all other faculty members and guests were invited to the dance which began at 9 p.m.

Supporting the class members and their advisors in the work at the banquet were Mrs. Alex Eressten, kitchen chairman; Mrs. Walter Schrader, Jr., dining room chairman; and Mrs. Lucille Olson, the school dietitian. Advisors for the prom were Mrs. Barbara Straker and James Bedford.

Theme of the prom was "Aloha 1968" and Hawaiian decorations used in keeping with that theme included artificial palm-trees, flashlights with figures of various animal life found in the sea entangled in the mesh, fountain effects, etc. Even the menu carried out the Hawaiian effect with such delicacies as "Walkiki chicken," "volcanoes," "rainbow coconuts" and "Pacific coolers."

Stephen Haydon, speaker, using as a timely example the current

construction of the Chelsea Milling Co. storage bins which has attracted many sightseers to Chelsea, likened the growth of the huge bins towering 120 feet in the air as workers faithfully kept at their task, day and night.

The Rev. Fr. Francis Mallonowski, pastor of St. Mary's Catholic church, offered prayer at the banquet table.

A special attraction during the evening's program was the appearance of 10-year-old Christy McMichael of Dexter, who set the Hawaiian mood with typical island dances and songs to the accompaniment of recordings.

The Junior class extended tokens of appreciation to the mothers who served as chairmen and to the advisors—Mrs. Straker and Mr. Bedford—and presented Mrs. Straker with a dozen roses.

**QUALITY BUILDING MATERIALS**

- ★ Chimney Blocks
- ★ Window Sash
- ★ Building Blocks
- ★ Cement Paint
- ★ Reinforcing Steel

**LEROY F. HOFFMAN CONCRETE PRODUCTS**

Business Address: Grass Lake, Phone 4511  
Residence Address: Chelsea, Phone GR 9-6471 (After 6:00 p.m.)

**AFTER SCHOOL**

"Mom, I'm hungry!" When you hear those familiar words, delicious milk is the best answer. It's a satisfying, healthful treat, and the youngsters love it. Be sure to keep plenty of milk on hand.

**WEINBERG DAIRY**  
Phone GR 5-5711

## LADDER SALE ALUMINUM and WOOD

Prices for Friday and Saturday, May 24-25 Only

### WOOD LADDERS STEP and EXTENSION GOOD QUALITY

2-ft. Step Stools	\$1.19
4 ft. STEP LADDERS	\$3.29
5 ft.	\$3.66
6 ft.	\$4.88
7 ft.	\$6.98
8 ft.	\$8.98
10 ft.	\$11.98

16-Foot Extension Ladders	\$10 <sup>88</sup>
24-Foot Extension Ladders	\$19 <sup>78</sup>

### Aluminum Ladders STEP and EXTENSION

Will not rot or rust or warp.

4 ft. STEP LADDERS	\$7.99
5 ft.	\$9.39
6 ft.	\$9.99

### EXTENSION LADDERS

16 ft.	\$16.99
20 ft.	\$19.98
24 ft.	\$23.99
28 ft.	\$28.88
32 ft.	\$39.88
36 ft.	\$44.50

ALL LADDERS ON DISPLAY

### SCREEN CLOTH

Aluminum, galvanized and fiberglass. In 20" to 40" widths.

Special Prices in large lots

### LAWN FOOD

EXCELLO 20-10-5 LAWN FERTILIZER

5,000-ft. bag \$2.66

REG. \$16.50 FERTILIZER SPREADER With 2 Bags of Fertilizer Both for \$10.88

### HEDGE TRIMMERS

Made by a reliable maker.

On Sale at \$23<sup>88</sup> Only a few left!

We Sell All Commonly Used Ortho Insecticides For Roses, Garden, Lawn and Fruit Trees

**MERKEL BROTHERS**



IT GOES INTO YOUR OIL TANK WITH GUARANTEED PRICE PROTECTION!

Fill now...pay next fall! You'll get guaranteed price protection: If prices go up this fall, you pay no more; if they go down, you pay less! And Marathon's Budget Plan customers get an insured heating policy (we pay your bill if you're ill). You can stretch out payments into 10 equal monthly installments, too. What's more, Marathon Heating.



**MARATHON OIL COMPANY**  
(Thank you for reading this message from Marathon)

Oil is hydrogen-fortified for cleaner burning. You reduce annual maintenance and repair bills, make your dollar keep you warmer longer. Remember, a full oil tank helps prevent rust which is caused by condensation on hot, humid summer days. Want more details? Call your Marathon distributor. He's listed in the Yellow Pages under Heating Oil.



## Club and Social Activities

### GRACE OTTO CIRCLE

The new Vivian Otto Circle of the Woman's Society of Christian Service of the Methodist church held its first regular meeting at the home of Mrs. Arthur Schunk. Assisting for the meeting was Mrs. Mary Schunk, who is the new club chairman.

Officers are Mrs. Benjamin Bower, co-chairman; Mrs. Mary Schunk, secretary; and Mrs. Winston Schenk, sunshine chairman.

It was announced that the next meeting, Wednesday, June 10, at 12:30 p.m., will take place at the home of Mrs. Charles Spencer on Eland.

with Mrs. Winston Schenk as hostess.

### CEC'S AUXILIARY

Ronald Brunham and Mrs. Guenther were co-hostesses of an evening for a meeting of the Chelsea Jaycee Auxiliary. The meeting was held at the home of Mrs. Brunham.

Business at the meeting included a report on the June Memorial Library June for members of Jaycee Auxiliary.

Members also discussed plans to assist the Jaycees in their efforts to help the men's organization has planned for May 23 and June 1-2.

### USALEM EXTENSION CLUB

Jerusalem Extension club members, at their meeting Tuesday evening, heard a report on the club's party they sponsored at the State Hospital May 10.

A total of 70 children were served at the party.

Members of the club who attended the affair are Mrs. Roy Hines, Mrs. Sylvester Weber, Mrs. Hines and Mrs. Walter Hines.

A letter of thanks was received from one of the girls at the party read at Tuesday's meeting.

Business at the meeting held at the home of Mrs. Leon Chapman included election of officers as follows:

Mrs. Warren Hoover, chairman; Mrs. Elmer Lindow, vice-chairman; Mrs. James Windell, secretary; Mrs. Walter Hines, senior leader; Mrs. Hines, community project chairman; and Mrs. Roy Koch, recreation chairman.

Mrs. Chapman and her co-leader, Mrs. Vergil Hines, served pot-luck supper to the 15 members present for the meeting and followed as the evening's entertainment.

### LIMA CENTER EXTENSION

An exceptionally good attendance was recorded at the May 8 meeting of Lima Center Extension club, held at Lima Center Community Hall.

Jack Merkel, of Merkel Brothers, was the guest speaker. He related the history of carpeting and described carpeting made of wool, nylon, acrylic, cotton, rayon and linen.

He also answered questions related to carpeting and its care during an informal discussion period which concluded the program.

The club plans to tour the Irish Hills and Hidden Gardens Wednesday, June 12, and all members who wish to be included in the party should be at Lima Center Community Hall at 10:30 a.m.

Cars will leave promptly at 11 a.m. and the group will stop for lunch enroute.

### OLDER ADULT GROUP

The May meeting of the Older Adult group of the Methodist church was held Saturday in the church social center; five of the members were honored in recognition of their May birthdays.

The five are Mrs. Ava Fisk, Byron Fortman, Mrs. Ruth Irwin, Miss Jennie Ives and Mrs. Letha Beach.

Entertainment, following the noon pot-luck dinner, was an amusing skit presented by three members of the Woman's Club of Chelsea.

Mrs. Arthur Schunk, Mrs. Charles Cameron and Mrs. George Walworth.

Saturday's meeting opened with the singing of the "Doxology" by the assembly, led by Mrs. D. L. Gadberry. The opening devotional service was in charge of Mrs. Loring Bates.

### SYLVAN EXTENSION CLUB

Twelve members of Sylvan Extension club met Thursday for a regular meeting at the home of Mrs. Philip Hoster. Her co-hostess was Mrs. Bertha Kate Riemschneider.

A report was given by Mrs. Roy Miller and Mrs. Fred Layher on an Extension club most tour in which they participated as representatives of the club. The tour took them to the Gunsberg Stockyards and packing house in Detroit.

During the business session Mrs. Howard Bergman and Mrs. Dorrit Whitaker were appointed to act on a nominating committee to present a slate of candidates for election at the June 20 meeting.

That meeting is to be held at the home of Mrs. William Broesamle.

At a recreation period following the business session, guessing games provided entertainment. Prizewinners in a game called "USA—Its People and Homes" were Mrs. Clarence Lehman and Mrs. William Broesamle.

### CHELSEA SUBURBANETTES EXTENSION CLUB

There were 16 members present Thursday for a regular meeting of Chelsea Suburbanettes Extension club at the home of Mrs. Melvin Leach. Co-hostesses included Mrs. John Laraway and Mrs. John Schittenhelm.

Mrs. Donald Bauer, who participated in an Extension club's tour of a Detroit meat packing plant on April 24, gave a report at Thursday's meeting.

Entertainment during a social hour which followed was the game, "Password," patterned after the television program of that name.

The next regular meeting of the club is scheduled for Sept. 19 at the home of Mrs. Robert Heller. A "husbands' night" social party is to be held Saturday, June 22, at 8:30 p.m., at the home of Mr. and Mrs. Melvin Leach.

### GRACE OTTO CIRCLE

Grace Otto Circle of the Woman's Society of Christian Service of the Methodist church met Tuesday evening with Mrs. James Hoffmeyer and Mrs. James Gaunt at

### THE CHELSEA STANDARD, CHELSEA, MICHIGAN

the home of the latter; it was the first meeting of the newly organized group.

During the program period, Mrs. Raymond Schlarer read a resume of the life and work of Miss Otto, a missionary in Southern Rhodesia, in whose honor the new circle was named.

Officers of the new circle are Mrs. Jack Pfeiffer, chairman; Mrs. Ross Baylis, vice-chairman; Mrs. George Atkinson, financial secretary; Mrs. Leon Blackburn, recording secretary; and Mrs. Andy Blackburn, sunshine chairman.

Business at the meeting also included a discussion of pledge cards. The opening devotional service was in charge of Mrs. Baylis. The circle's next meeting will take place in September, following the summer vacation period.

### METHODIST HOME WSCS

Members of the Woman's Society of Christian Service of the Methodist Home elected officers for the year at the May meeting held Tuesday evening.

Officers named are Mrs. Edwin Weiss, president; Mrs. Edith Bis-

### bing, vice-president; Mrs. Gustave Ziegler, secretary; Miss Ruth Jenkins, treasurer; and the following departmental secretaries—Mrs. Josephine Graham, promotion; Mrs. Lloyd Merrell, missionary education; Mrs. Fannie Chambers, Christian social relations; Mrs. Grace McCartney, spiritual life; Mrs. Dora Baker, literature; Mrs. Alida White, supply work; and Mrs. Edith Pierce, mite boxes.

Officers were installed by the Rev. Weiss.

The program at the meeting featured a speaker, Sylvia Aldridge, a retired Southern Rhodesia missionary who is making her home at Cass City.

The devotional service, which opened the meeting, was led by Miss Mina Stewart with Margaret Helfferich assisting as pianist.

### PEARL BAXTER CIRCLE

Wednesday, May 15, at 1 p.m., the newly-formed circle of the Methodist Woman's Society of Christian Service of the Methodist church, known as Pearl Baxter Circle, held its first meeting at the home of Mrs. Howard Walz,

### electing chairman by the WSCS.

Also appointed by the WSCS was the program and devotional chairman, Mrs. John Potts.

Mrs. Walz, Mrs. Potts and the remaining officers of the circle, named by the members themselves, were installed by Mrs. S. D. Kinde. Included are Mrs. Robert Kush-

maut recording secretary, Mrs. Irwin Klump, financial secretary, and Mrs. Daniel Ewald, sunshine secretary.

Co-hostesses at Wednesday's meeting were Mrs. Daniel Ewald.

The program and devotional service presented by Mrs. Potts centered on the Spofford Home for children at Kansas City, Mo., one of the institutions of the Methodist Church.

Also included was a brief resume of the missionary, Pearl Baxter, for whom the circle was named. She is stationed at Lucknow, India, and the circle has appointed its recording secretary to write to her there.

The next meeting of the Pearl Baxter Circle is to be a pot-luck dinner gathering at the Cavanaugh Lake home of Mrs. Walter Mohr-

### look at 12:30 p.m. Wednesday, June 10.

### MARION SHAW CIRCLE

The first meeting of the Marion Shaw Circle was held in the educational unit of the Methodist church at 1:30 p.m. Wednesday, May 15. There were 17 members and two guests present. Dessert was served by Mrs. Guy Barton and Mrs. David Soule.

Officers were elected and installed at the meeting by Mrs. Claire Warren, WSCS president. They are Mrs. Guy Barton, chairman; Mrs. David Soule, vice-chairman; Mrs. Alan Conklin, recording secretary; Mrs. Carl Schlosser, financial secretary; and Mrs. Roy Kalmbach, sunshine chairman.

Two new members were welcomed into the group—Miss Bertha Schlenker and Mrs. Dillman Wahl.

The devotional period was opened with the reading of a letter from Korea from Miss Shaw. Missionary for whom the Circle is named, Mrs. Edwin Weiss led the devotional period.

The June meeting is to be a

### pot-luck luncheon at the home of Mrs. Edwin Weiss, 12:30 p.m. Wednesday, June 10.

### MARION SIMON CIRCLE

Marion Simon Circle of the Methodist church, held its first meeting since its recent organization at the home of Mrs. Albert Peterson. The meeting took place Wednesday, May 15, the principal business being election of officers.

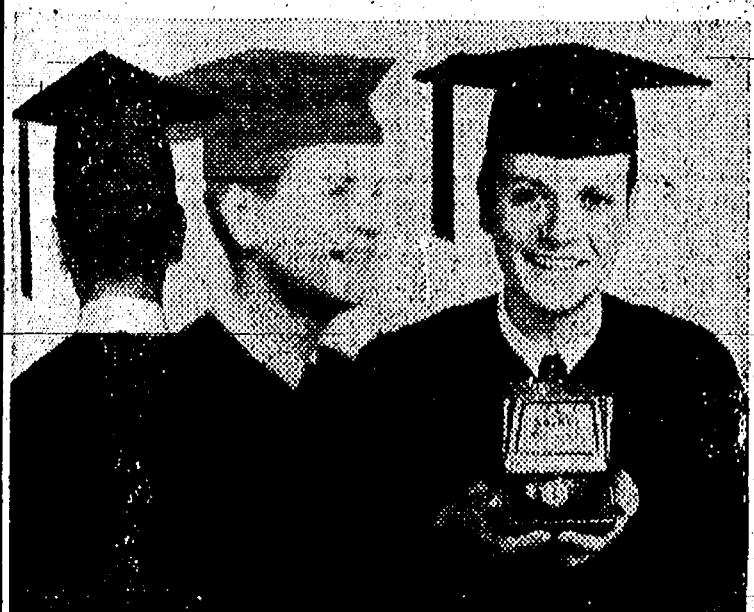
Elected are Mrs. Albert Peterson, chairman; Mrs. Robert Harris, vice-chairman; Mrs. Lawrence Riemschneider, financial secretary; Mrs. E. M. Beach, secretary; Mrs. Winifred Coffron, sunshine chairman; Mrs. Lyman Adams, reporter.

The next meeting is scheduled for Wednesday, June 19. It will feature a Japanese-style breakfast, and each member is to bring an item on current events pertaining to Japan.

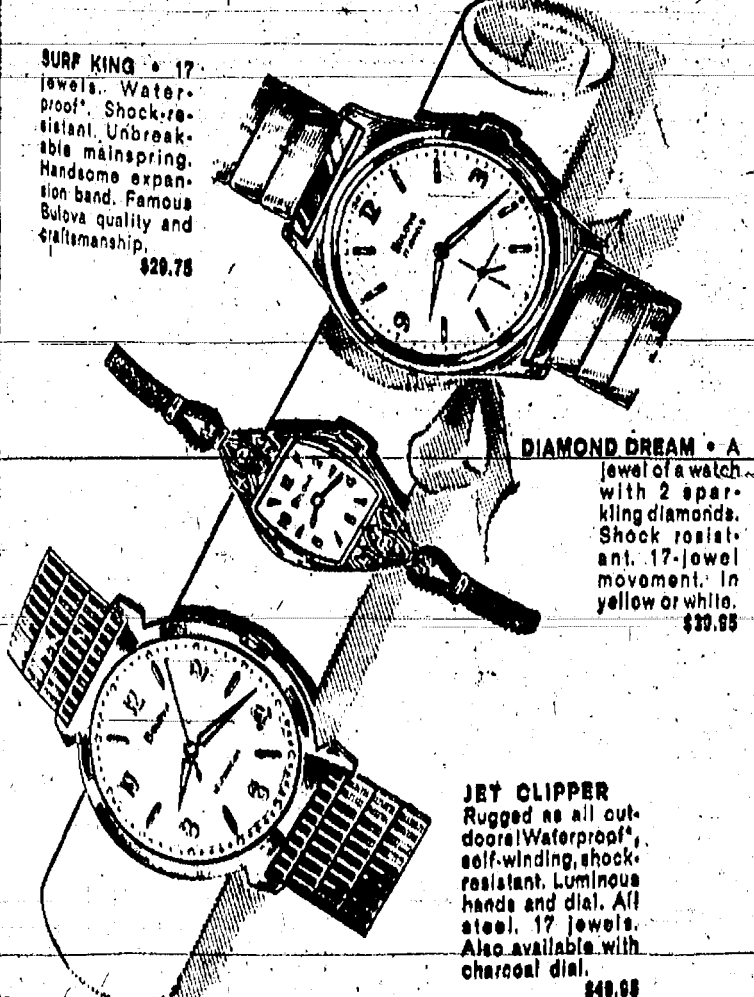
The meeting will be held at the home of Mrs. Winifred Coffron.

Get all the facts in the case—idle rumor is poison, but truth is the antidote.

## For the Turning Point of Their Lives...



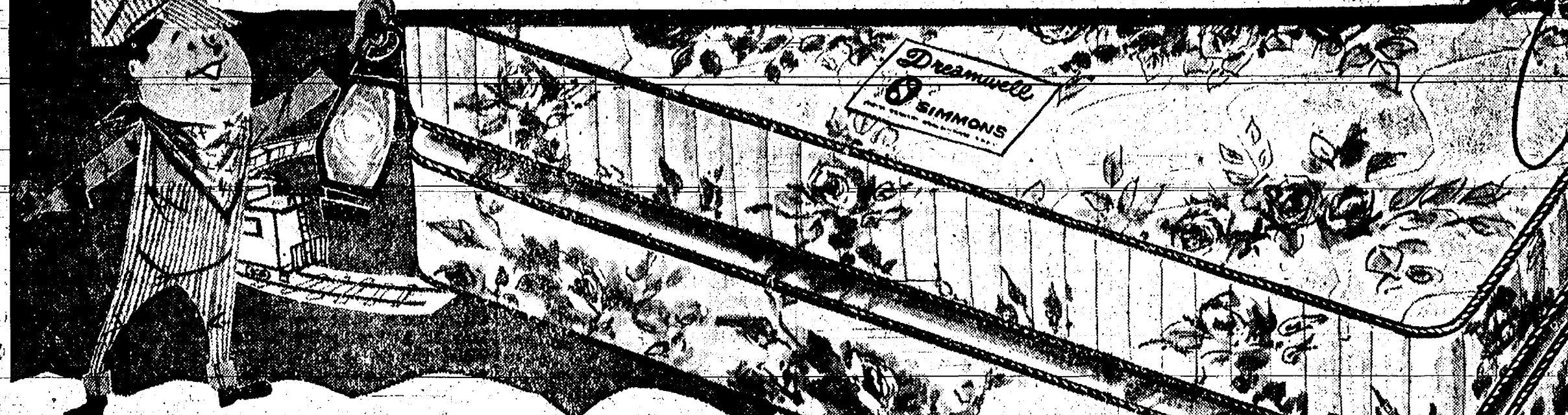
## Give BULOVA



**AUTHORIZED KEEPSAKE DEALER**  
**WINANS JEWELRY STORE**  
Chelsea, Mich.  
Phone GR 9-2921

# 7th ANNUAL SIMMONS CARLOAD BARGAINS

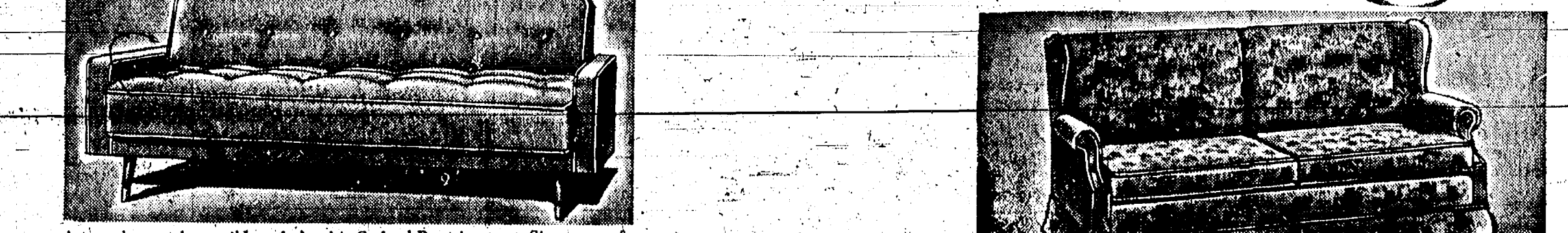
ONCE-A-YEAR CHANCE TO GET SIMMONS QUALITY AT A SAVINGS!!



## DREAMWELL Sleep Set

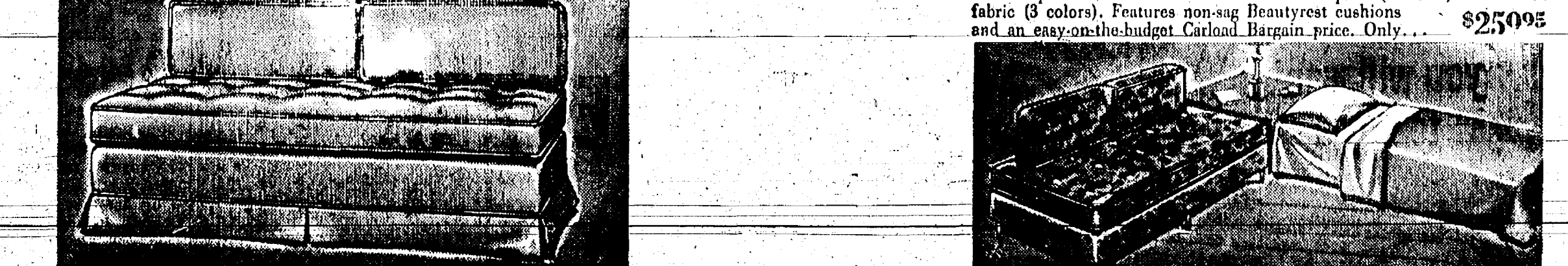
Sensationally low prices for this event. Quilted mattress in lovely gold-on-beige rayon cover features over 200 resilient Adjusto-Rest springs for buoyant sleeping comfort. Matching boxspring is engineered by Simmons to support mattress perfectly. A really terrific buy.

Mattress and Boxspring \$78.88 Twin or full size.



A great buy made possible only by this Carload Bargain event. Simmons sofa bed has famous Deepsleep construction, smart styling and storage space for sheets and blankets. Nylon cover available in 4 colors or lovely tweed in 5 colors. Sleeping room for 2 people.

\$99.95



Can't be beat for value! Twin studio with Simmons exclusive Deepsleep construction for extra sleeping comfort. Studio and the matching bolsters can be yours in nylon pile fabric (4 colors) or a lovely textured fabric (5 colors). Extra sleeping for 2 for only...

\$99.95



Perfect for sitting or sleeping, perfect for den or playroom. Simmons Tru Comfort Divan Set consists of mattress, boxspring and 6 legs. Covered in a Colonial print. In 30, 33, 36, or 39-inch width, all priced at only...

\$566 each matching bolsters \$69.44

Just picture this handsome Hide-A-Bed sofa in your living room. Note how it's been styled to go with almost every decorator scheme. Features comfortable polyfoam seat cushions, a full-size Simmons mattress and a durable textured fabric cover further accented by the smart kick pleat. Choose from 5 lovely decorator tones.

\$199.95

**MERKEL BROTHERS** Chelsea, Mich.



# Community Calendar



**Harvest Home Service**—Chelsea High school annual Harvest Home service will be held at Chelsea High school, 1000 E. Main St., Thursday, May 23, 7:30 p.m. to 9:30 p.m. Admission is free. Refreshments will be served. The program will include a play, "The Harvest Home," and a song contest. Tickets are available at the door.

**Chelsea Jaycees**—The Chelsea Jaycees will hold their monthly meeting on Thursday, May 23, 7:30 p.m. at the Chelsea High school. The program will include a report on the monthly activities and a presentation of the month's award.

**Chelsea High School**—The Chelsea High school will hold its annual Harvest Home service on Thursday, May 23, 7:30 p.m. to 9:30 p.m. at the Chelsea High school. Admission is free. Refreshments will be served. The program will include a play, "The Harvest Home," and a song contest. Tickets are available at the door.

**Chelsea High School**—The Chelsea High school will hold its annual Harvest Home service on Thursday, May 23, 7:30 p.m. to 9:30 p.m. at the Chelsea High school. Admission is free. Refreshments will be served. The program will include a play, "The Harvest Home," and a song contest. Tickets are available at the door.



**PASTOR PLASTERED WITH BILLS**—The Rev. Harold S. Bilotta, as he appeared at the conclusion of a "this is your life" program Sunday evening at his church, the Assembly of God, on Old US-12. Members of his congregation had surprised him at the close of the evening service, and presented him with gifts of currency which they pinned to his suit coat—some were one-dollar bills and others were five-dollar bills—in appreciation for his efforts in their behalf.

## Assembly of God Parish Honors Pastor Harold Bilotta

The Rev. Harold S. Bilotta, pastor of the Assembly of God church on Old US-12, was honored Sunday evening at a surprise program presented after the television program "This is Your Life." At the conclusion of the program, planned and presented by Mrs. Earl Williams, members of his congregation came forward with gifts of one-dollar and five-dollar bills which they fastened to his coat.

Mrs. Williams, in announcing the event, said that her pastor has been in the ministry for 12 years and that he has been a great blessing to the church and the community.

The story of the honored pastor was read by Mrs. Williams, who said that her pastor has been a great blessing to the church and the community.

The story of the honored pastor was read by Mrs. Williams, who said that her pastor has been a great blessing to the church and the community.

The story of the honored pastor was read by Mrs. Williams, who said that her pastor has been a great blessing to the church and the community.

## DEATHS

### Miss Linda Kalmbach Dies Tuesday Afternoon Following Long Illness

Miss Linda C. Kalmbach, formerly of Chelsea, died Tuesday afternoon at Cedar Knoll Rest Home, west of Gram Lake, following a long illness. For some years before entering the nursing home, she had lived at 62 Baldwin Ave., Ann Arbor. For 20 years prior to her illness she was employed at the International House at Ann Arbor. She was 73 years old.

Born Oct. 22, 1889, in Ypsilanti, she was a daughter of Frederick and Mary Biemer-Kalmbach. She attended grade schools here and then graduated from Chelsea High school and from Ypsilanti State Normal College, now Eastern Michigan University. She taught school in Jackson county for many years. She was a life member of Salem Grove Methodist church and for a number of years served as the church organist.

Survivors are a brother, Oscar Kalmbach of Garvey Rd., a cousin, Mrs. Hollis (Ethel) Freeman of Ann Arbor; and five nieces and three nephews, Kathryn and Wallace Kalmbach of Atlanta, Ga.; Lila Kalmbach of Pasadena, Calif.; Herbert Kalmbach of Newport Beach, Calif.; Mrs. George (Joan) Coulam of Arcadia, Calif.; Mrs. James Beal (Carolyn) of Saline; and Mrs. James Gaunt (Donna) and Mrs. Leon Sanderson (Betty) of the Chelsea area.

Funeral services will be held at 2 p.m. tomorrow (Friday) at the Burghardt Funeral Home with the Rev. John Jolley officiating. Burial will follow at Salem Grove cemetery.

Friends may call at the funeral home.

### Congregationalists Extend Call to Guest Speaker

The Rev. Robert A. J. Livingston, who was guest speaker at the May 19 service at the Congregational church, is being extended a call to become pastor of the church.

The congregation voted to extend the call on recommendation of the pastoral committee of church members who had been assigned the responsibility for recommending a pastor succeed the Rev. Philip Rusten who resigned to go into teaching and counseling work.

The Rev. Livingston is currently serving as an associate pastor at Kenmore, N. Y., a suburb of Buffalo.

If he accepts the call to the Chelsea church he will take up his duties here in August.

Guests from Tuesday until Thursday at the home of Mr. and Mrs. Joseph Laban were the latter's brother and sister-in-law, Mr. and Mrs. Joseph Franzen of Mansfield, O.

## W. J. Adams Killed in Auto Crash

William J. Adams, 37, of 616 Flanders St., Chelsea, and Benjamin Krause, 38, of Ypsilanti, were killed Thursday in an automobile accident at Salterville, Ky., where they were partners in the Star Petroleum Co. Adams was president of the company and Krause was part owner.

Adams was a member of the Chelsea Methodist church, Olive Chapter No. 140, R.A.M.; Olive Chapter No. 108, O.E.S.; Olive Lodge No. 156, F&AM; of which he was a past master; Zai Gaz Grotto in Ann Arbor; Detroit Consistory; Moslem Shrine in Detroit; and Plumbers and Steamfitters Local 190. He served with the Seabees during World War II.

Born June 19, 1925, in Magoffin county, Kentucky, he was the son of Roy E. and Roxie Collinsworth Adams. He was married April 14, 1945, to Katherine Collinsworth, who survives.

Also surviving are two sons, William David and John Kevin at home; one daughter, Margaret Ann of Coldwater; his parents of Marion, O.; three sisters, Mrs. Robert (Sarah) Weston and Mrs. John (Ruby) Sheehy of Marion and Mrs. Arthur (Glendine) Collins of Toledo, O.; five brothers, Willie of Waverly, O.; Hollie of Toledo, O.; Lowell of Mansfield, O.; Roy Jr. of Marion; and Bruce of Plymouth, Mich.

The body was at the Burghardt Funeral Home until noon Monday and lay in state from noon until 2 p.m. at the First Methodist church where funeral services took place followed by burial at Oak Grove cemetery.

Masonic graveside rites were in charge of Olive Lodge No. 156, F&AM.

In addition to his connection with the Star Petroleum Co., Krause worked as a construction contractor. He and wife, the former Byrnes Pack, had lived in Ypsilanti since their marriage in 1945 while he was serving in the Air Force.

Among his survivors, in addition to his widow are two sons, Darrel and Sherrel at home, and his parents, in Lodi, Calif.

Funeral services were in charge of the Stevens & Bush Funeral Home, in Ypsilanti.

### Jaycee Awards

(Continued from page one)

A team of judges until all but the best three in each category are eliminated.

Chelsea received five first-place awards as follows: Health and Safety; their seat belt clinic; Inter-Club Relations for their attendance at district and state affairs; Public Relations for their Outstanding Young Farmers and Bosses' Night program; Ways and Means on their Chicken Barbecue; and Chapter Development for their awards program.

Second-place awards received were for Community Development at Pierce Park, and Youth & Sports activities for the Easter egg hunt.

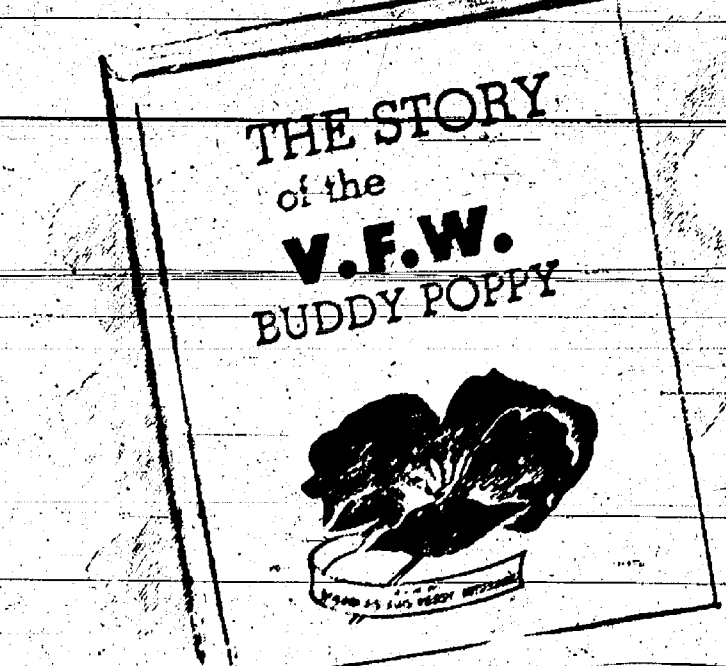
Chelsea's third-place award was for Christmas Activities for the Village Christmas tree project.

Chelsea's ninth award was the coveted "Project of the Year Award" in Division I for the success of their seat belt clinic last year.

"The Jaycees are proud to have these awards which the people of Chelsea helped make possible by supporting their projects. Only with such splendid support were the Jaycees able to meet with all state competition successfully and bring home so many awards," the Chelsea Jaycees report stated.

Jaycees attending the convention were Ron Eder, Lloyd Schneider, Ed Akin, Past President George Winchester, Art Stoll, Merle Leach, Dan Maroney and Elton Guenther.

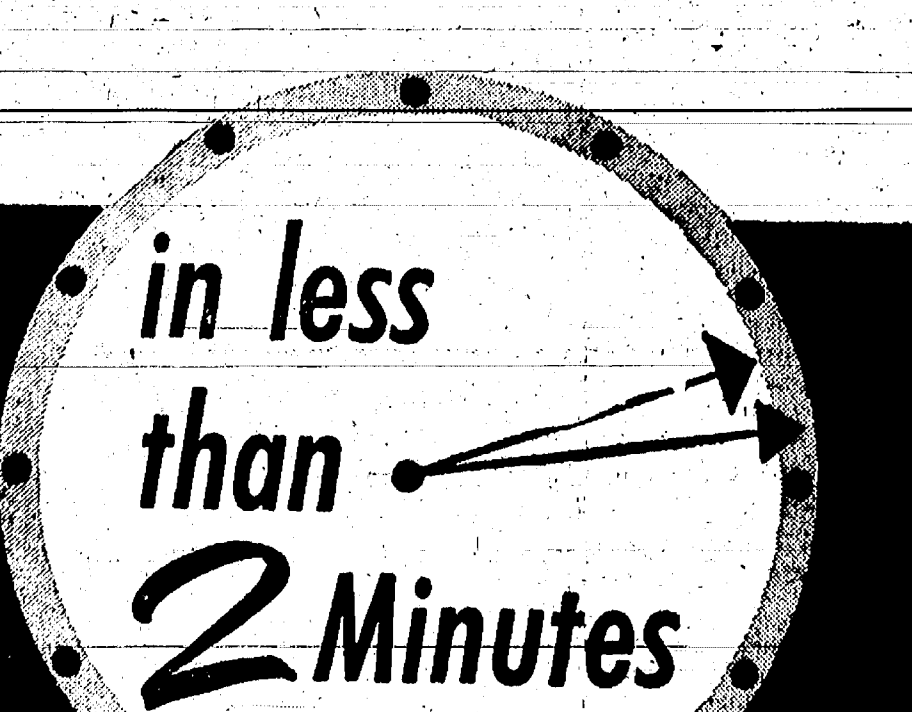
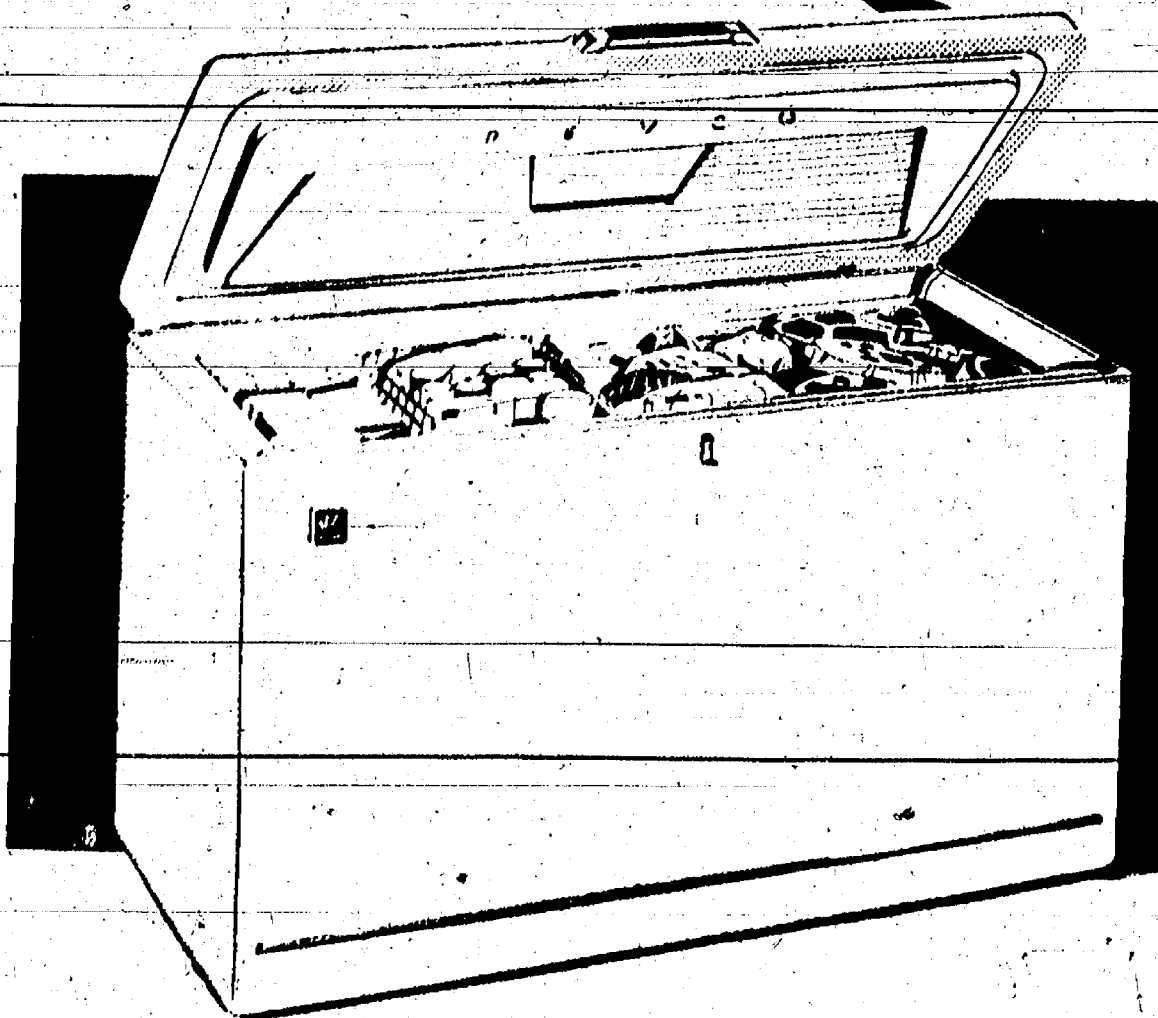
It was pointed out that this is the first time the Chelsea Jaycees organization has ever received a first-place award at the state convention and then walked away with five first, in addition to the four other awards.



BUY A BUDDY POPPY WEAR IT PROUDLY! ON SALE MAY 24 2 a.m. - 2 p.m.

Veterans of Foreign Wars Post No. 4076 and The Ladies Auxiliary

## Revco FREEZER



After you see our amazing demonstration you will be convinced that the Revco Freezer has the FASTEST FREEZING ACTION KNOWN!

## FRIGID PRODUCTS

113 NORTH MAIN ST. LLOYD R. HEYDLAUFF PHONE OR 9-6851

## CHELSEA JAYCEES SEAT BELT CLINIC

ONLY \$6.00 PER BELT, INSTALLED SATURDAY and SUNDAY, MAY 25-26 Also: Saturday and Sunday, June 1-2 Saturdays: 8 a.m. to 5 p.m. Sundays: 12 Noon to 5 p.m.

AT STOP & SHOP PARKING LOT Corner M-52 and Old US-12, Chelsea

Another Public Service by Your Chelsea Jaycees.

## Gambles



Grade "A" LATEX INTERIOR Regularly \$3.98 gallon

DISCOUNT PRICE!

333 Gallon White or Colors

Save now on white or decorator colors with Grade "A" latex interior paint from Gambles. Applies easily with brush or roller, dries quickly, gives walls a fresh new look. Tough finish, retains brightness even after repeated scrubbing. There's no messy clean-up—rinses brush out with water. Stop at Gambles paint headquarters today.

## SUPER KEM-TONE... AMERICA'S FAVORITE WALL PAINT



No other wall paint has ever won such a big "OK"!

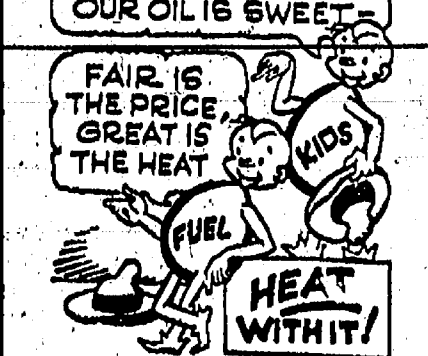
- NEW ECONOMY—goes farther per gallon.
- NEW DURABILITY—looks better longer.
- NEW WASHABILITY—finger prints and smudges wash away without a trace.
- NEW EASY PAINTING—all the skill you need is in the paint.
- NEW COLORS—bring more beauty to your rooms.
- NEW MONEY-BACK GUARANTEE—purchase price of paint refunded if you're not completely satisfied.

\$2.10 qt. \$6.39 gal.

ALWAYS BETTER BUYS AT GAMBLES

### Dave Potts' FUEL KIDS

THIS FACT ABOUT OUR OIL IS SWEET



Yes, a cozier, more comfortable home is "in the bag" for YOU when you heat with our fine, dependable fuel oil. Call us today to place your order.

DAVE POTTS 682 W. MIDDLE ST. Phone GR 9-3311



# The NATIONAL OUTLOOK

By GEORGE HAGEDORN

## Balance of Payments ... No Progress ...

We seem to be making no progress at all toward the solution of this country's balance-of-payments difficulties. The international deficit exceeded two billion dollars in both 1961 and 1962, and record so far this year indicates little hope that the situation will be better in 1963 and it may be somewhat worse. There has not been a large gold outflow this year, but foreign claimants to our gold cannot be expected to continue their forbearance indefinitely. There have been multifarious ad hoc programs instituted by government for closing the payments gap but they just haven't worked.

Also, monetary arrangements with other nations and with international institutions may tide us over temporarily in a crisis, but they do not provide a solution to the fundamental difficulty.

The problem is complicated by the fact that we are suffering simultaneously from sluggishness in our domestic economy. The standard "liberal" approach—meeting the latter difficulty is the "stimulation of demand." But all-out action along these lines would be inflationary and make the international payments problem worse. As a result we drift along with a compromise of measures which don't quite do either job.

The danger is that if our balance of payments remains in deficit, we may be forced into more

radical expedients. One possibility is the institution of direct controls on the outflow of funds—perhaps limitations on tourist expenditures or on foreign investment. This would certainly invite retaliation and could eventually severely limit the growth of international trade and investment.

An even more radical possibility is a devaluation of the American dollar. The President has declared his firm intention of preserving the gold convertibility of the dollar at its present rate, but events may prove stronger than he is. If there were a small devaluation it might simply give us a short breather while labor costs here increased again to the point where our competitive position was back to where it started. If the devaluation

were a large one, it would practically force other nations to follow us. The ultimate consequence, in this column's opinion, would be to pull the rug out from under the international convertibility of major currencies.

There is a way, although not very palatable politically, whereby we can make progress toward relieving both the domestic-sluggishness problem and the international deficit. That is by reducing unit labor costs, and the way to do that is by keeping wage increases below the rate of increase in productivity. The domestic economy would get a lift through the opening up of profit margins. The United States would become a more attractive place of investors to place their funds. Our ability to earn funds through exports would be improved.

It is time we stopped talking about "keeping wages in line with productivity gains." Wage increases should be kept well below the rate of productivity growth—at least until better international equilibrium is restored.

## CONFIRMATION HONORED

Mr. and Mrs. Carl Stevens entertained at a dinner at their home Sunday honoring two of their grandchildren, Stephanie Ann and Jeffrey Lynn Stevens, following their confirmation at the Methodist church. Guests present, in addition to the honored ones, included their parents, Mr. and Mrs. Ira Johnson and family; also, an aunt, Mrs. Wilson McManigal of Lake Orion.

## June 1 Deadline Set on Reservations For Alumni Banquet

Chelsea Alumni Association committees point out that June 1 is the deadline date for reservations for the alumni banquet, scheduled to be held June 8, at 6:45 p.m., at the Chelsea High school cafeteria. Tickets may be secured and reservations made at Foster's Men's Wear store, Winans Jewelry store or Chelsea Drug Store. Mrs. George Winans can also arrange for reservations.

All classes of years ending in "8" are to be specially honored at the banquet; three of the classes have announced they are planning special reunions. They are the 60th

anniversary class of 1913; the 25th anniversary class of 1938; and the 10th anniversary class of 1953.

Entertainment at this year's banquet has been planned to provide a maximum of reunion and reminiscence activity—a feature which the committee believes will be of interest to graduates of all classes.

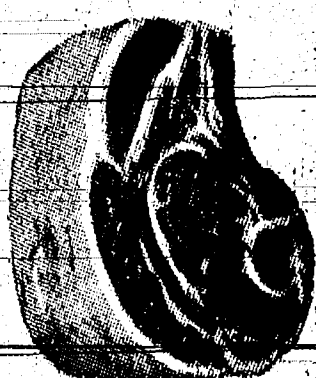
## Kiwanis Quotes

"The most terrible of lies is not that which is uttered but that which is lived."  
—W. G. CLARKE.

# STOP & SHOP

14901 OLD U.S. 12 — CORNER M-92  
CHELSEA, MICHIGAN

STOP & SHOP Features ... "Triple R Farms" ... U. S. Choice ... Corn Fed Beef



"Triple R Farms" ... U. S. Choice

STANDING

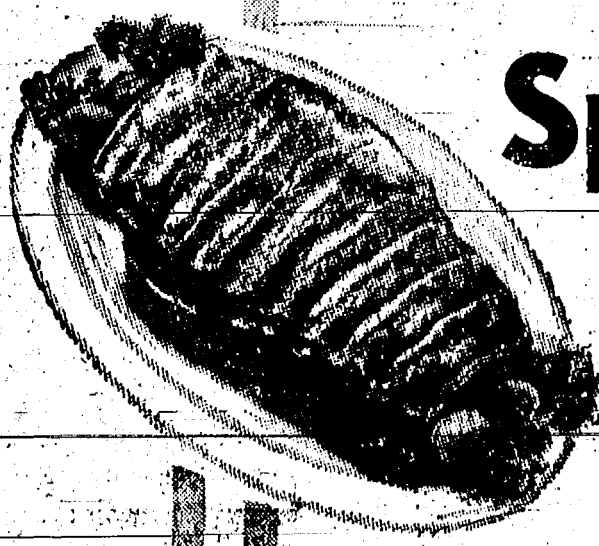
RIB ROAST

69<sup>c</sup> Lb.

Lean, Tender  
CENTER CUT

Pork Chops

59<sup>c</sup> Lb.



Lean ... Meaty ... Tender  
BABY

Spare Ribs

(For Barbecuing)

49<sup>c</sup> Lb.



"Triple R Farms" ... FRESH DRESSED

FRYERS

27<sup>c</sup> Lb.

Cut Up ... 31<sup>c</sup> Lb.

"Triple R Farms"

FRESH DRESSED

★ Chicken LEGS 49<sup>c</sup> Lb.

★ Chicken BREASTS 53<sup>c</sup> Lb.

(Ribs Attached)

PETER'S HICKORY HOUSE  
Hickory Smoked

SLICED BACON

2 Lb. Pkg. 89<sup>c</sup>

"Triple R Farms" ... Fresh Sliced

BEEF LIVER

29<sup>c</sup> Lb.

PETER'S

POLISH SAUSAGE

49<sup>c</sup> Lb.

"Triple R Farms" ... Mich. Grade 1

SLICED BOLOGNA 39<sup>c</sup> Lb.

PETER'S

HAMS

63<sup>c</sup> Lb.

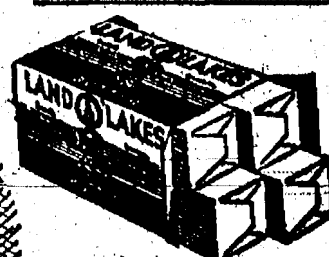
KRAFT'S Salad Dressing

MIRACLE WHIP



39<sup>c</sup>

With Coupon  
Limit 1



LAND O' LAKES — Fresh Sweet Cream

BUTTER

(In 1/4 Lb. Prints)

1-Lb. Ctn. 69<sup>c</sup>

DOLE

PINEAPPLE JUICE

3 46 Oz. Cans 79<sup>c</sup>

DOMINO — Pure Cane

10X Powdered SUGAR

1-Lb. Box 15<sup>c</sup>

ZOIN — Fresh Baked

FIG BARS

2 Lb. Pkg. 39<sup>c</sup>

WILSON'S — Fresh, Homogenized

MILK

1/2 Gal. Glass 35<sup>c</sup> Plus Deposit

HUNT'S — Yellow Cling

PEACHES

Halves or Sliced No. 2 1/2 Can 25<sup>c</sup>

MAXWELL HOUSE  
Instant Coffee

6 Oz. Jar 89<sup>c</sup>

GREEN GIANT  
Sweet Peas

2 15 Oz. Cans 39<sup>c</sup>

MOTT'S  
Apple Sauce

25 Oz. Jar 27<sup>c</sup>

LIBBY'S — Deep Brown  
Beans

4 No. 2 1/2 Can \$1.00

RED-MAID — Pitted  
Dessert Cherries

In Heavy Syrup 2 No. 303 Cans 49<sup>c</sup>

LIBBY'S — Deep Brown  
Spaghetti and Meat Balls

2 1 1/2 Lb. Cans 69<sup>c</sup>

GOOD TASTE — Fresh, Crisp  
Saltines (Wrapped in 1/4 Lb. Pkg.)

1-Lb. Box 21<sup>c</sup>

CLIP CHAR  
Briquets

10 Lb. Bag 79<sup>c</sup>

WHITE CROSS  
Plastic Strips

Regular 86c 2 For 69<sup>c</sup>

Pure Vegetable Shortening



CRISCO

3 Lb. Can 59<sup>c</sup> With Coupon Limit 1

SNIDER'S

CATSUP

10<sup>c</sup>

With Coupon Limit 2

CHASE & SANBORN, BEECH-NUT, HILLS BROS. OR

MAXWELL HOUSE COFFEE

58<sup>c</sup> With Coupon



• All Grinds



WILSON'S

Cottage Cheese

16 Oz. Ctn. 17<sup>c</sup> With Coupon Limit 2

STOP & SHOP'S  
• Enriched • Sliced

WHITE BREAD

5 20 Oz. Poly Wrap Loaves \$1

SAVE at STOP & SHOP

With This Coupon

KRAFT'S Salad Dressing  
MIRACLE WHIP

Quart Jar 39<sup>c</sup> Limit 1

Limit One Coupon Per Customer

Expires Tuesday, May 28, 1963

SAVE at STOP & SHOP

With This Coupon

Pure Vegetable Shortening  
CRISCO

3 Lb. Can 59<sup>c</sup> Limit 1

Limit One Coupon Per Customer

Expires Tuesday, May 28, 1963

SAVE at STOP & SHOP

With This Coupon

Chase & Sanborn, Hills Bros., Beech-Nut or Maxwell House  
COFFEE

1-Lb. Can 58<sup>c</sup> Limit 1

Limit One Coupon Per Customer

Expires Tuesday, May 28, 1963

SAVE at STOP & SHOP

With This Coupon

WILSON'S  
Cottage Cheese

16 Oz. Ctn. 17<sup>c</sup> Limit 2

Limit One Coupon Per Customer

Expires Tuesday, May 28, 1963



## CHS Baseball Team Loses 1, Wins 2 Games This Week

Chelsea won two baseball games and lost one during the past week. In a game with Dexter Tuesday, May 21, described as a "rather wild and loosely played game," Chelsea was able to hold out and win their final league game of the year.

Chelsea fell behind, 4-0 in the first inning but came back with six runs to forge ahead until the seventh inning when Dexter tied the score at 10-10.

In the bottom of the seventh, Chelsea scored the winning run on three walks and a hit batter.

Gary Dresch went all the way pitching with Owen Wireman catching.

Dresch and Gary White had a triple and double, respectively, for Chelsea.

This win ended the league season for Chelsea with four wins and six losses.

	R	H	E
Chelsea	11	5	3
Dexter	10	10	4

At the May 17 game at South Lyon, the score was tied at 1-1 when the game was called in the fifth inning because of rain. It ended as a "no-contest."

Thursday, May 16, Chelsea was defeated by Roosevelt, 9-2, at Roosevelt, after Chelsea had won from the same team in a home game on Wednesday with a score of 1-0.

On Wednesday Don Brooks turned in the best pitching job of the season, holding Roosevelt hitless until the seventh inning when they got their only hit. Gordon Beeman scored Chelsea's only run on a hit and three errors got him across.

Don Brooks pitched and Owen Wireman was catcher for Chelsea while the Roosevelt pitcher and catcher were Don Brickell and Mike Sukack, respectively.

	R	H	E
Chelsea	1	3	3
Roosevelt	9	1	3

Roosevelt's 9-2 win from Chelsea at Roosevelt on Thursday saw Roosevelt's Bill Wales as the winning pitcher. Phil Boham and Gary Dresch pitched for Chelsea.

Jim Homdon and Sinkule hit home runs for Roosevelt and Gary Dresch collected a triple for Chelsea.

	R	H	E
Chelsea	2	4	5
Roosevelt	9	7	1

The JV team lost their first game to South Lyon last Thursday, May 10, by a 9-5 score. They were also rained out on Friday as they were leading South Lyon 4-2.

The JV's won a Monday game against Pinckney 2-1.

### Jackson State Police Post Commander To Head Racket Squad

State Police Sgt. Raymond H. McConnell, commander of the Jackson post, has been promoted to detective lieutenant and assigned as commander of the racket squad with headquarters at East Lansing.

He succeeds Det. Lt. Carl W. Robinson, who has been suspended and is facing prosecution in Wayne county on a charge of embezzling \$1,200 which was confiscated in a gambling raid by the squad.

Sgt. Matt Hebec, of the safety and traffic bureau, Paw Paw fifth district headquarters, is being promoted to sergeant IIA and transferred to command at Jackson.

Blueberries, fresh or in prepared dishes, are delicious. Michigan stands second in production of this favorite crop—last year 17½ million pounds. Slightly more than half the crop went into processing. The experiment station at South Haven is nationally known for the new blueberry varieties it has propagated.

## HEAD PIN BOWLING

Continues Through June 17

## MEN! MARATHON BOWL

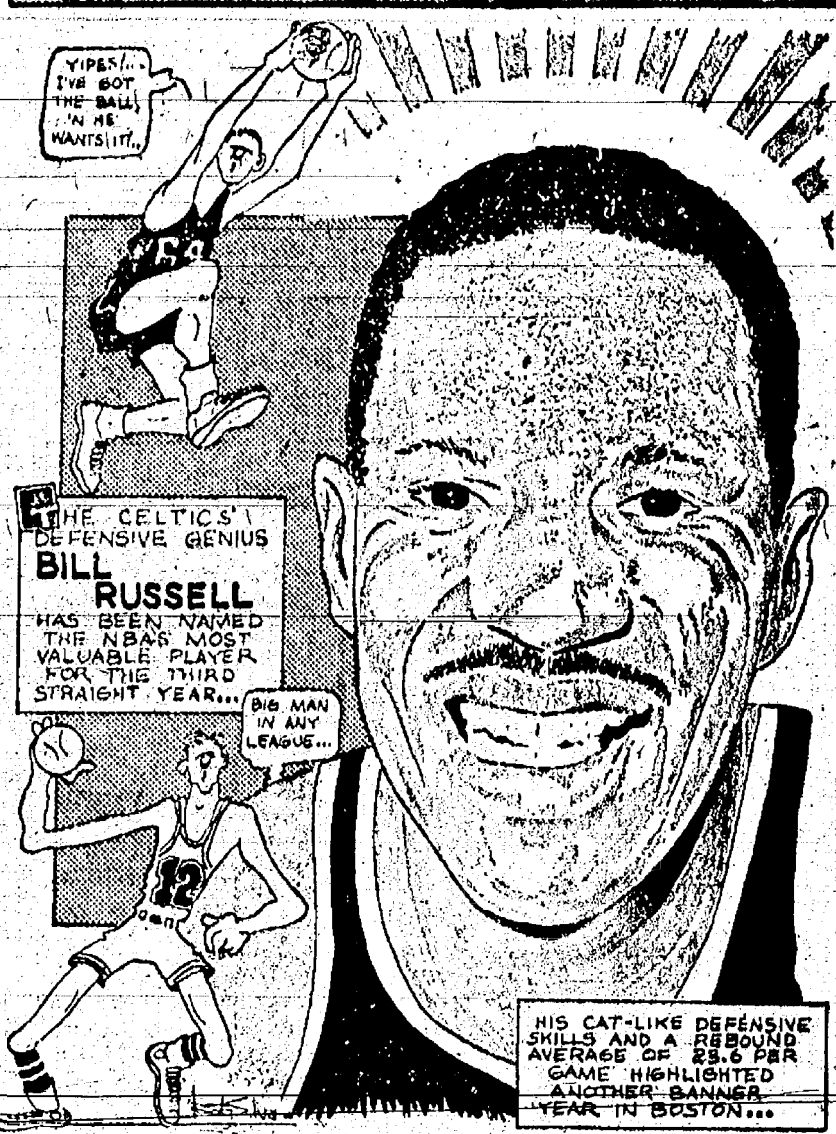
May 25 at 5:30 p.m.

AIR CONDITIONED

## CHELSEA LANES

Phone GR 5-8141

## Sports Corner



HIS CAT-LIKE DEFENSIVE SKILLS AND A REBOUND AVERAGE OF 25.6 PER GAME HIGHLIGHTED ANOTHER BANNER YEAR IN BOSTON...

## BOWLING

Chelsea Lanes

Summer Mixed League

Standings as of May 17

	W	L
B. & H.	4	0
Hot Spots	3	1
3 Aces & A Spade	2	2
Scrubs	2	2
Mixed Nuts	1	3
Pinbusters	0	4

Men's 475 series or over: G. Winchester, 508; R. Hutzel, 585; R. Green, 520; A. Starr, 616; E. Greenleaf, 491.

Men's 175 or over: G. Winchester, 246-194; R. Hutzel, 202-194-180; A. Starr, 193; R. Green, 182.

Women's 425 series or over: M. Winchester, 468; J. Hutzel, 442; W. Miles, 440.

Women's 180 or over: W. Miles, 170-150; R. Winchester, 167; M. Winchester, 164-157; J. Hutzel, 161-155; A. Alexander, 166-154.

Attention Women Bowlers—The annual meeting of the Ann Arbor Women's Bowling Association will be held Sunday, May 26, at 7 p.m. at the Ann Arbor Moose Lodge, 390 S. Maple Rd. Business to be transacted upon will be: Election of Offi-

### Michigan Poor Third

In Fishing License Sales

Lansing — Michigan, a one-time leader in fishing license sales, placed third in the nation for 1962. Behind California which has held a firm grip on the No. 1 spot in recent years, according to figures just released by the U. S. Department of the Interior.

Some 1,115,135 licenses and stamps were purchased in this state last year for \$2,712,550. California anglers paid \$6,247,470 for a total of 3,495,742 licenses and stamps. Minnesota was second with 1,308,850 licenses and stamps at a cost of \$2,494,790.

From 1948 through 1962, Michigan topped all states in total sales. Since then, it has wavered between second and fourth place. Its number of individual fishing license holders totaled 927,027 last year.

Michigan ranks second among the industrial states in productivity as measured by value added per employee and third by value added per man hour.

Special assessment for next year to be paid with individual sanction next season. Association awards will also be awarded.

## CHS Coaches Named by School Board

The Chelsea Board of Education following action at the regular meeting Tuesday, announced the appointment of the coaching staff—with some coaching positions still to be filled—and the hiring of three new faculty members, who will serve also in coaching positions.

Head football coach is James Bedford; assistant varsity coach is a new man, Fred Mills; and the junior varsity coach is Jack Curl. Two new men—Terence Pokela and Richard Donley—are to coach basketball. Pokela named head coach and Donley, JV coach.

Jack Curl is also assigned to be head track coach while Bert Kruse is head baseball coach.

Bedford moved to his present position as head coach after serving as assistant varsity coach last year.

The assistant varsity football coach, Fred Mills, will teach mathematics in addition to coaching. He is a graduate of Stockbridge High school and has BA and MA degrees from Eastern Michigan University.

Pokela, who was ninth grade basketball coach at Dexter the past two years, will be remembered by students here as having done practice teaching at Chelsea during the 1960-61 school year.

He was a member of the state basketball championship Chassel High school team. He has been assigned to teach biology.

Donley, the JV basketball coach, is a graduate of Big Rapids High school and received a bachelor of arts degree at the University of Michigan where he was a member of the basketball team. He taught the past two years in a Muskegon junior high school. He is to be an industrial arts teacher here.

It is believed the necessary additional coaching staff will be named in the next week or 10 days.

### Chelsea Golf League

Standings as of May 18

	Pts
A. D. Mayer Ins.	15
Chelsea Mfg. Corp.	12
Chelsea Products	11
Seltz's Tavern	9½
Central Fibre	9½
Gambles	9
Chelsea Drug	7½
Chelsea Milling Co.	6

Michigan ranks tenth or higher in production of more than 20 major crops, although ranking only 22nd in land area.

## Pakistan Native in Sylvan Justice Court for Fishing Without License

Dr. Hushi Mayad, 88, of Pakistan, now living in Dearborn, appeared Friday before Justice of the Peace Chandler Rogers in Sylvan Township Justice Court on a charge of fishing without a license. The incident occurred May 4 in Seco township, according to a report by Conservation Officer Donley Boyer.

Dr. Mayad pleaded guilty and was assessed fine and costs of \$13.

**NOW OPEN!**  
**STOCKBRIDGE DRIVE-IN**  
WEST MAIN STREET, STOCKBRIDGE  
**UNDER NEW MANAGEMENT**  
CURB AND DINING ROOM SERVICE  
Open Seven Days A Week—Including Holidays

Standard Ads Are a Good Shopping Guide

# OPENING

## Thursday, May 30

### DECORATION DAY

# WATERLOO GOLF COURSE

— at —

## Trist and Moeckel Rds.

Heart of the Waterloo Recreation Area

### GREENS FEES

# \$1.00

### PLAY BY MEMBERSHIP

Proprietors: Duane Paul & William Siegrist



## TOWER SHELL STATION

1630 M-52 (at I-94) CHELSEA

PHONE 475-8935

HOURS: 6 a.m. to Midnight — SUNDAY 8 a.m. to Midnight

## SPECIAL FREE LUBRICATION With Oil Change

— SPECIAL —  
BRAKE ADJUSTMENT

99¢

★ COMPLETE  
BRAKE SERVICE

★ MUFFLERS

★ TAILPIPES

★ MOTOR TUNE-UP

HARMON PLACE  
Owner

JERRY DUDLEY  
Salesman

JOHN LYONS  
Salesman

JOHN BOWDISH  
Salesman

All Glad  
To Serve You.

— SPECIAL —  
CARS  
POLISHED - WAXED  
\$10.00

— SPECIAL —  
SAVE on

SHELL OIL

Buy By the Case

PREMIUM GOLDEN

SHELL MOTOR OIL

10W - 30X - 100

Display Your Flag  
AMERICAN FLAG KIT  
3'x5', Complete, Only

\$2.57

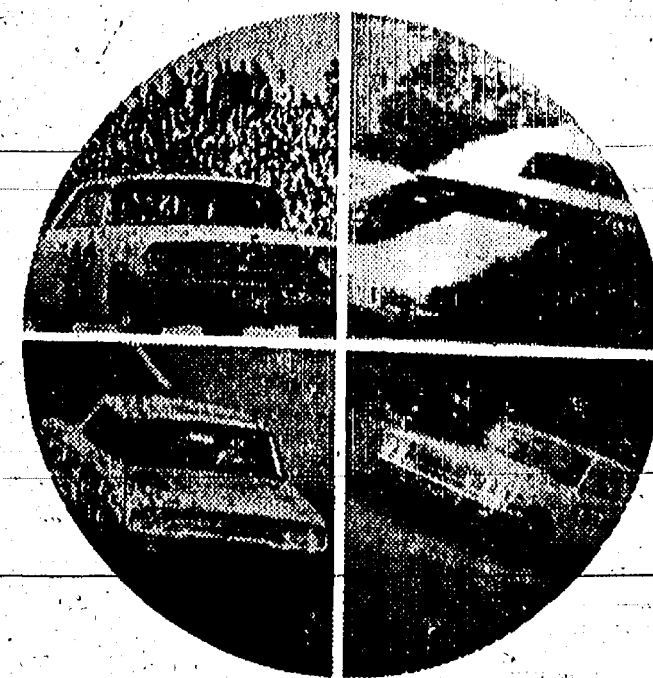
TV STAMPS  
GOODYEAR TIRES

1630 M-52  
(at I-94) Chelsea

TOWER SHELL STATION

PHONE  
475-8935

Look at the record...  
**FORD'S WAY OUT FRONT IN PERFORMANCE AND DURABILITY!**



Ford's the one to watch this year! The record proves today's great Super Torque Ford is certain to be a better car for the kind of driving you do every day. It's a standard road car!

Performance and durability make a combination that's hard to beat. Mechanical failure forced some pretty hot performers to quit at Riverside, Daytona, Atlanta, Bristol. Ford's won them all—proving it takes more than speed and acceleration. It takes durability, too. Open competition is a speeded-up test program. It tests brakes... suspension... cornering... steering... roadability. It tests total performance. And Ford delivers—not only in competition, but in your kind of driving, too. See your Ford Dealer for the proof—sample total performance for yourself.

Riverside, Calif. A '63 Super Torque Ford crossed the finish line first in a field of 40 cars. This 500-mile event is run over a twisting, turning 2.7-mile sports-car track.

Daytona, Fla. In the toughest 500-mile event of the season, Ford's came in 1st, 2nd, 3rd, 4th and 5th. Over half the starters in a field of 50 at Daytona never even finished.

Atlanta, Ga. Score another big win for Ford in open competition—the Atlanta 500. Atlanta's 500 miles equal, roughly, the wear and tear of 100,000 miles of ordinary driving.

Bristol, Tenn. This 250-mile event on a half-mile track is one long, continuous left turn. Ford's finished 1st and 2nd—another dramatic victory for total performance.

F.D.A.F.

IF YOU HAVEN'T DRIVEN A FORD LATELY...YOU'RE MISSING SOMETHING!

**PALMER MOTOR SALES, INC.**

CHELSEA, MICHIGAN



# RURAL CORRESPONDENCE

Items of Interest About People You Know As Gathered By Correspondents

## NADILLA

Max Kalmbach was hostess for the North Lake Extension club at her home.

Mrs. Colin Charkoff of the city were Sunday guests of the Barons.

Greene-Habermehl of Farmington spent the past week-end with Mrs. Ralph Wright.

Mrs. Paris Giltner called on Mrs. Lorna May and

Frank Lee of Ann Arbor visited Mrs. Max Kalmbach Tuesday.

Mrs. Margaret Hadley and Vera Kalmbach attended a family dinner Wednesday at Howard Boyce.

Mrs. and Mrs. Clair Barnum were Sunday dinner guests of Mr. and Mrs. Ralph Wright.

Carle Blanchard of Plainfield spent Thursday with Mrs. May.

Mrs. and Mrs. Norman Richmond were Sunday guests of their parents, Mr. and Mrs. Bangs.

A group of model airplane enthusiasts were at the Gregory air Sunday flying their planes.

Blade and his sister and families of Dale, Mich., called on Mrs. Bangs Richmond home Sunday.

Hazel Groshann (formerly Wood of Aurora, Ill.) is in hospital there.

Doris Richmond entered hospital Wednesday night.

Campbell and Francis May were at the week-end with Mrs. Marjorie Hadley.

Elta McCall of Grass Lake was Sunday on Mrs. Veva Richmond.

Mrs. William Pypert was Sunday at Tecumseh.

## NORTH FRANCISCO

Mr. and Mrs. Max Hoppa and family were Sunday afternoon visitors of Mr. and Mrs. Henry Nutton.

Mr. and Mrs. Dale Javala and daughter, Barbara, of Grass Lake, spent Wednesday evening with the former's mother, Mrs. Leonard Loveland. Mr. and Mrs. Glenn Rentschler were Friday evening callers.

Mr. and Mrs. Nelson Peterson called on Mrs. Alma Fowler and Mr. and Mrs. Orla Ackley of Stockbridge, Sunday afternoon.

Mr. and Mrs. Philip Hosler and daughter were recent supper guests of Mrs. Ola Boelm. Mrs. Opal Hosler and grandson, Jeff, of Plymouth, were Sunday evening supper guests of Mr. and Mrs. Philip Hosler and family.

Mrs. Norman Peterson and family of Grass Lake, were Monday evening visitors of Mr. and Mrs. Nelson Peterson.

Mrs. Roy Miller called on Mrs. Clay Langston and Mr. and Mrs. Charles Willoughby Thursday evening.

Mrs. Alma Meyers, Mrs. Walter Schrader, Sr., and Mrs. William Beach called on Mrs. Roy Miller Friday afternoon.

Mr. and Mrs. Ed Seeger of Grass Lake were Sunday dinner guests of Mrs. Eva Notten.

Mrs. Nina Wahl attended the mother-daughter banquet Tuesday evening, at the Federated church of Grass Lake, as a guest of her daughter, Mrs. James Clark, and daughters.

Mrs. Nina Wahl spent Thursday with Mr. and Mrs. Douglas Kennedy and family.

Kathy and Carol Ann Clark were Friday overnight guests of their grandmother, Mrs. Nina Wahl. Other guests of Mrs. Wahl were

Mr. and Mrs. Norman Hinderer and family.

Mr. and Mrs. Roy Miller were Sunday afternoon callers of Mr. and Mrs. Max Hoppa.

Sunday afternoon callers of Mrs. Nina Wahl were Mr. and Mrs. Jaron Hinderer and family, Mrs. Edith Neeger and Mr. and Mrs. Roy McCullough of Jackson.

Mrs. Nina Wahl, Mrs. James Clark and daughter were Saturday morning callers of Mrs. Ellsworth Crandall and family of Stockbridge.

## FOUR MILE LAKE

Mr. and Mrs. Conrad Turner and Mr. and Mrs. Clifford Heydlauff and daughter, Ann, son, Ned, and his fiancé Pat Pastor, were Mother's day dinner guests of Mr. and Mrs. Jerald Heydlauff and family.

Mr. and Mrs. William Wierich and daughter, Faye Ann, were Sunday afternoon visitors of her mother and sister, Mrs. Mary Reames and Mrs. Meta Shelhart, of Gregory.

Mr. and Mrs. Jerry Kelly and family, of Livonia, were Sunday afternoon visitors of their parents, Mr. and Mrs. Harvey Fischer and grandmother, Mrs. John Fischer.

Mr. and Mrs. Newland Begole of Milan, and Mr. and Mrs. Vernon Satterthwaite of Chelsea were Sunday dinner guests of Mr. and Mrs. Ronald Satterthwaite. It was a birthday anniversary honoring Ronald Satterthwaite.

Mrs. Inez Day and Mr. and Mrs. Miles Speer of Jackson were Saturday afternoon visitors of their cousins, Mr. and Mrs. Ezra Helinger.

Mr. and Mrs. Flossie Warner were Sunday evening visitors of Mr. and Mrs. Paul Bauer and family.

Mr. and Mrs. Donald Wright and daughters, of Chelsea, Mr. and Mrs. Robin Wright and son, of Lima Center, were Sunday afternoon visitors of Mr. and Mrs. Burton Wright and family.

Mr. and Mrs. John Langowski of Chelsea and daughter, Nancy, were Sunday dinner guests of Mr. and Mrs. Richard Abdon and son. Afternoon visitors were Mr. and Mrs. Frank Abdon of Chelsea.

## LYNDON TOWNSHIP

Mr. and Mrs. Laurence Nash and son, Duane, were Sunday dinner guests of Dr. and Mrs. W. C. Lane and family of Chelsea.

Mr. and Mrs. Floyd Roderick of Dixboro were Sunday guests of their son and his family, Mr. and Mrs. Gary Roderick.

Mr. and Mrs. Howard Boyce entertained the Hadley cousins at their home with a pot-luck dinner Tuesday.

Mr. and Mrs. Earl Lee spent Friday evening with Mrs. Mary Clark and son, Dean.

Mrs. Mary Clark and son, Dean, were Saturday evening callers of her sister, Mrs. Clarence Bott of Batteese Lake.

Tommy Shanahan was a Thursday guest of his grandparents, Mr. and Mrs. Lawrence Shanahan.

Dr. T. Clark and granddaughter, Julie, and Florence, of Jackson, were Sunday afternoon callers of Mr. and Mrs. John O'Connor.

Mrs. Adorna Hoard, daughter, Evelyn, and friend, Phyllis of Millington, Mr. and Mrs. Leroy Hazel of Hastings, Mrs. Clarence Bott of Batteese Lake, Mrs. Alta Alexander of Ypsilanti and Mrs. Jack MacVicar of Lansing, were Sunday afternoon callers of Mrs. Clark and son Dean. Evening callers were Mr. and Mrs. DeLo Wilcox of Millville.

Mrs. Nettie Hall and Mrs. Charles Fuhrman, with Mrs. C. J. Renner, Mrs. Wilbert Koengster and Mrs. Lydia Zahn of Rogers Corners, were luncheon guests Wednesday at the home of Mrs. Alton Grau, Sr. of Rogers Corners.

Mr. and Mrs. Darwin Egloff were Mother's day guests of their son and daughter-in-law, Mr. and Mrs. Hazen Egloff, of Dearborn.

Miss Edith Egloff spent three days the past week at the home of her brother and sister-in-law, Mr. and Mrs. Darwin Egloff.

Howard Messenger returned Wednesday after being a patient at Foote Hospital, Jackson.

## Be Your Family's Own Lifeguard

MORE THAN HALF OF THE 209\* FATAL MICHIGAN WATER ACCIDENTS IN 1962 COULD HAVE BEEN PREVENTED BY USE OF PROPER SAFETY DEVICES, SAY INVESTIGATING OFFICIALS.

\*-236 PERSONS LOST THEIR LIVES IN THESE ACCIDENTS.

USE OF LIFE PRESERVERS COULD HAVE PREVENTED 43 FATAL ACCIDENTS!

24 CHILDREN UNDER THE AGE OF 10 DROWNED IN 1962 BY FALLING INTO THE WATER FROM PIER, DOCKS, BANKS, ETC.

10 FATAL ACCIDENTS COULD HAVE BEEN AVOIDED BY PROPER SUPERVISION!

## CUB SCOUT NEWS

Parents, Cub Scouts and families planning to attend June 30 Cub Scout picnic at Delhi pavilion must contact den mothers or Cubmaster Malcolm Novess at once in order that arrangements may be completed.

Cub Scouts and leaders of Pack 125 held the May Pack meeting at the Junior High school gymnasium Thursday May 16.

Perfect attendance recognition was given to Dens 2, 5, 6, 7, 9, 10, 11 and 13.

The meeting was opened with a flag ceremony by Den 7 of which Mrs. Pat Foytik is den mother.

The Law of the Pack was given by Brad Curtis and the Cub Scout promise by Thomas Skittenhelm.

Interesting samples of the boys' work from Dens 1, 2, and 10 were on display.

A graduating ceremony took place and Webelos Den 5 was graduated into Boy Scouts. Vern Hilt has been the Webelos den father.

Bill Windle, district executive was a guest and spoke to the fathers of the boys who graduated into Boy Scouts.

The meeting closed with Den 7 retiring the flags.

Boys who received awards are listed as follows:

Paul Maurer, 1-year pin; Dean Foye, 1 Silver Arrow; David Merkel, Lion Badge; Kris Marzee, Lion Badge; John Dettling, Lion Badge; Thomas Harmon, Lion Badge; Gordon Morgan, Bear Badge; 1 Gold Arrow; Ronnie Sweeney, Wolf badge; 1 Gold Arrow, 3 Silver Arrows; Dick Clark, Bobcat Pin; Jeff Van Riper, Bobcat pin; Clinton Arnett, Bobcat pin; Bill Harrison, Bobcat pin; Rodger Rourke, 1-year pin; Mark Thompson, 1 Gold Arrow; Ricky Foytik, 1 Gold Arrow, 1 Silver Arrow; Danny Schuelke, Wolf Badge, 1 Gold Arrow, 1 Silver Arrow.

The list continues with Bruce Parks, 1 Silver Arrow; Steven Bergman, 1-year pin; David Heydlauff, 1 Silver Arrow; James Kalmbach, 1 Silver Arrow; Dennis Landwehr, 2 Silver Arrows; Dale Robbins, Bear Badge; John Lantis, Bear Badge; 1 Silver Arrow; Raymond Franklin, Wolf Badge, 1 Gold Arrow; Brad Curtis, Bobcat Pin; Chick Lane, Wolf Badge; Douglas McDonald, Wolf Badge; Donald Gillett, Wolf Badge, 1 Aronson, 1 Gold Arrow, 2 Silver Arrows; Larry Jones, 2 Silver Arrows.

Webelos badges went to Roger Hilt, Floyd Boyce, James Juergens, Ronald Bush, Albert Hatley, Lawrence Desmitthers, Gary Miles and Andy Soule.

Awards continue with Gordon Beaumont, Webelos Badge, 1 Silver Arrow; John Hepburn, 2 Silver arrows; Tommy Schittenhelm, Bobcat pin; Mike Thompson, 1 Silver arrow; Doug Lindsay, 1 Silver Arrow; Donald Nutt, 2-year pin; Bill Stahl, 2-year pin; Tom Tirt, 2-year pin.

## Debbie Weiss Models Apron in 'County Fair' At Greenfield Village

Debbie Weiss was chosen by representatives of the Wayne county 4-H group to participate in Saturday's dress revue held at Greenfield Village in conjunction with the third annual "County Fair of Yesteryear" of the Henry Ford Museum and was awarded a certificate of achievement for placing first in the "young-woman" category.

She modeled an apron she had made and worn during the Washington county 4-H dress revue earlier this spring, she had received a first division rating there, also.

Representatives of 4-H clubs from six counties competed at the style show Saturday at the invitation of the sponsoring Wayne county 4-H group.

Debbie's parents are Mr. and Mrs. Duane Weiss of Freer Rd.

Hope College was established by the Reformed Church in Holland in 1851, and Calvin College was founded by the Christian Reformed Church in Grand Rapids in 1870.

MAUSOLEUMS \* MONUMENTS  
BRONZE TABLETS \* MARKERS

**BECKER MEMORIALS**

6033 Jackson Road  
ANN ARBOR, MICHIGAN

## CHELSEA VILLAGE COUNCIL PROCEEDINGS

May 7, 1963  
Council Room

Regular Session.

Invocation by the Rev. S. D. Kinde of the Chelsea Methodist church. Trustees present: Bollinger, Burg, Chapman, Clark, Hasel-schwardt, and Wood. A rezoning hearing was called to order by Pres. Daniels at 8:00 p.m. at which time Pres. Daniels requested that the hearing be conducted with Pres. Pro-Tem Steve Clark assuming control of the meeting.

A lengthy discussion was held on the rezoning request submitted by Joseph Merkel and Thomas Elsie to change the premises as submitted from "R-1" Single Family to "R-3" Multiple Family. Several area residents were present to discuss the merits and or disadvantages of this rezoning request.

Motion by Burg, supported by Chapman, to approve the rezoning request of Joseph Merkel and Thomas Elsie as submitted. Roll call: Yeas, Burg and Chapman, Nays, Wood, Bollinger, Hasel-schwardt. Motion not carried.

Rezoning hearing adjourned.

Minutes of the Regular Session of April 10, 1963 were read and approved.

Bids for the 1963 excavating, black topping, curb and gutter and sidewalk construction were submitted to the Village Clerk and were publicly opened at 12:00 noon. The following firms and their bids follow:

Curb, gutter, and sidewalk: Earl Schultz, Co., \$5,710.70; Michigan Curb, \$6,768.30; Tom Robinson, \$6,040.00.

Excavating: Ann Arbor Const. Co., \$16,327.28; Wash-tenaw Asphalt, \$18,495.00; Work-man Const. Co., \$18,058.00.

Excavating: Rod Mills, \$9,701.28; Ann Arbor Const., \$13,443.10; Bob Fitzsimmons, \$13,070.76; Tom Robinson, \$11,418.40.

Motion by Wood, supported by Bollinger, to accept the low bid of Rod Mills in the amount of \$9,701.28 for the 1963 street excavation. Roll call: Yeas all. Motion carried.

Motion by Wood, supported by Clark, to accept the low bid of Ann Arbor Const. in the amount of \$16,327.28 for the 1963 Bituminous

Burg, to authorize payment of \$706.51 to Peter Kurzy, Village Engineer for engineering on Village streets for the 1963 street program. Roll call: Yeas all. Motion carried.

Motion by Wood, supported by Hasel-schwardt, to authorize payment to Peter Kurzy in the amount of \$199.00 for 4 catch basin covers at \$49.75 each. Roll call: Yeas all. Motion carried.

A request was entered by Gurney Hopper for a variance for the construction of a garage to be located at 524 Lane Street, within three feet of the south line of the property located at 522 Lane Street. A letter granting consent of this variance was submitted by Mr. and Mrs. Robert Thompson.

Motion by Hasel-schwardt, supported by Clark, to grant the variance requested by Gurney Hopper. Roll call: Yeas all. Motion carried.

Motion by Clark, supported by Burg, to authorize and direct the clerk to issue checks in payment of bills as submitted. Roll call: Yeas all. Motion carried. General Fund, \$5,584.30.

Motion by Chapman, supported by Hasel-schwardt to adjourn the meeting. Roll call: Yeas all. Motion carried.

Meeting adjourned.

Approved: May 21, 1963.  
Robert L. Daniels, President.  
George Winans, Clerk.

## Social Worker Addresses CHS Sociology Class

Mrs. Beverly Sharps sociology class at Chelsea High school, had a guest speaker, Miss Coris, a social worker with the Children's Division, Michigan State Welfare Dept., at Ann Arbor.

She told the students in the class of the services offered by the agency and the jobs she is called upon to do in her capacity as a caseworker.

Earlier in the present school term, a representative of the Social Security Administration was a guest speaker.

**GOOD BRAKES NECESSARY!**

Be sure your car is set for safe driving and safe stopping. Come in soon and let us check your brakes, put them in "tip top" condition.

**COMPLETE ONE-STOP SERVICE**

**Bill Brown's Super Service**

GOOD GULF PRODUCTS. PHONE GR 9-1311

205 SOUTH MAIN ST.

**You Can Depend On PIONEER**

Strong Germinating and **rain' to grow** even in cold, wet soil. Backed by Replanting Agreement

We have PIONEER on hand. You can get it immediately. CALL OR SEE US

**Blaess Elevator Co.**

PHONE GR 9-6511  
Four Mile Lake Chelsea

**STONE • SAND • GRAVEL TRANSIT MIX CONCRETE**

The Short Hills Gravel Company, operating under new management, is now loading:

- Washed stone and sand for concrete
- Mason sand
- 60-40 washed gravel
- Washed septic tank stone
- Fill or bank run

Also available from the facility on Manchester Road, south of I-94 freeway, is transit mix concrete for any construction project.

**SHORT HILLS GRAVEL COMPANY**  
MANCHESTER ROAD • CHELSEA • GR 9-4353

**MAUSOLEUMS \* MONUMENTS  
BRONZE TABLETS \* MARKERS**

**BECKER MEMORIALS**

6033 Jackson Road  
ANN ARBOR, MICHIGAN

**HILLTOP PLUMBING**

BOB SHEARS  
201 S. Main St. Ph. 479-3851

**YOU'LL PROFIT FROM BETTER FEEDS**

Extra proteins, vitamins and minerals are scientifically blended to promote your stock's growth and health, and to boost your profits.

Complete feeding rations for all your livestock, poultry.

**FARMERS' SUPPLY CO.**

PHONE GR 5-5511

**CHOICE VARIETY of SPRING VEGETABLE and FLOWER PLANTS**

**FLOWERING PLANTS**

45c Dozen - 50 for \$1.40 in case lots  
100 for \$2.75 in case lots

- Petunias
- Zinnias
- Asters
- Marigolds
- Moss Rose
- Phlox
- Verbena
- Salvia
- Snapdragons
- Carnations
- Alyssum
- Delphinium
- Ageratum
- Lobelia

**VEGETABLE PLANTS**

40c Dozen - 50 for \$1.00 in case lots  
100 for \$1.75 in case lots

- TOMATOES (Most popular varieties)
- PEPPERS
- CABBAGE
- BRUSSEL SPROUTS
- BROCCOLI
- SWEET ONIONS
- EGG PLANT
- HEAD LETTUCE
- CAULIFLOWER

**POTTED PLANTS**

Geraniums ..... 30c each, 4 for \$1.00  
60c each, \$6.50 a doz.

Hardy Mums ..... 25c  
Harvest Giant Mums ..... 50c  
Tuberous Begonias ..... 35c - 75c  
Double Petunias, doz. .... 50c  
Pansies, doz. .... 50c  
Delphiniums, doz. .... 50c

**CHELSEA GREENHOUSE**

MEMBER FTD — WE TELEGRAPH FLOWERS ANYWHERE

7010 LINGANE ROAD  
PHONE GR 9-6071



**Answer To Puzzle No. 700**

[illegible]



# Legal Notices

**ORDER APPOINTING TIME FOR HEARING CLAIMS**  
No. 4185  
The Probate Court for the County of Washtenaw, Michigan, do hereby order that the claims of the Estate of GILBERT W. CONLIN, deceased, shall be heard on July 21, 1963, at 9:30 a.m. in the Courtroom of said Court, held on the second floor of the County Courthouse, 100 North Main Street, Ann Arbor, Michigan. That all creditors of said estate are required to present their claims in writing and under oath to the Court at least fourteen (14) days before the date of said hearing. That the Court will be seated at the time of said hearing, and that such claims shall be heard by the Court at the time of said hearing. That notice thereof be published in a copy hereof for the convenience of creditors. That the Court will be seated at the time of said hearing, and that such claims shall be heard by the Court at the time of said hearing. That notice thereof be published in a copy hereof for the convenience of creditors. That the Court will be seated at the time of said hearing, and that such claims shall be heard by the Court at the time of said hearing. That notice thereof be published in a copy hereof for the convenience of creditors.

# Laff Of The Week



"What's her name here, insists I've grown indifferent."

# CLUB NEWS

**MAJESCO COOKS**  
The second meeting of the Lima-Majesco 4-H club was held at 7 p.m. at the home of Sylvia Schneider. The 4-H Talent Show was discussed. Also it was decided to have a demonstration and for the meetings be set.

# Girl Scout Council

**Elects New Officers**  
The election of officers of the Huron Girl Scout Council took place at the annual business meeting held Thursday at the Knights Columbus Hall in Wayne. Mrs. Glenn Edmonson and Mrs. H. Crooks, both of Ann Arbor, were named first and third vice-presidents, respectively, and Mrs. J. Adams of Ypsilanti, was named District II chairman. The board of directors members were named as well as six regional council delegates. Certificates of Appreciation were awarded to Mrs. David Mather, of Ypsilanti; Mrs. Ray Adams, and Walter Wood of Wayne; Mrs. Lawrence Archibald of Ann Arbor; Mrs. Alex Anderson of Ypsilanti.

# GOVERNOR ROMNEY REPORTS

The national and world spotlight is on Michigan this week. During this 10th annual Michigan Week celebration, our great state is wearing its best suit and putting its best foot forward. For seven days (May 19-25), more than 10,000 citizens are joining together to unfold the story of Michigan, both in serious undertakings and in a light manner. Michigan has much to be proud of—much to boast about to the world. While this 10th anniversary celebration, with its appropriate theme of "Science and Research for Our Future" is an excellent vehicle for promoting the state's greatness, I think it is also important to sell Michigan—its vacations, its products and its industrial potential all year long—at home and abroad. Each of us should feel a strong sense of duty, coupled with intense pride, to promote our state—at all times, to all people, in all

places. We who live in Michigan are its best salesmen and we have an impressive historical, cultural and economic story to tell. We can modestly point out that: It was two years before the Pilgrims landed at Plymouth Rock in 1618 that Etienne Brule reached what is now Michigan's Upper Peninsula, and the state's first permanent settlements were made at Sault Ste. Marie in 1668 and St. Ignace in 1671 by Fathers Dablon and Marquette. Four flags—French, English, Spanish and American—have flown over our state, and now it is an unmatched combination of industrial empire, recreation paradise and diversified agriculture. Michigan's shoreline is longer than either the Atlantic or Pacific coastlines. Ironwood is as far west as St. Louis, Mo.; Hancock is farther north than Montreal, Canada; and Port Huron is as far east as Greenville, S.C., or Asheville, N.C. Michigan leads all states in per capita support of higher education. Michigan has 100,043 miles of public roads and streets—enough to go around the equator four times. Labor's achievements in Michigan have added a brilliant page to the state's history. The Detroit Mechanics' Society, founded in 1818, was one of the first unions in the nation. The 330-mile new highway stretching from the Ohio border to the Straits of Mackinac is the nation's longest toll-free super-highway. Michigan's farmers gross more than \$770 million annually from 15 million crop acres and the annual retail value of agricultural output in the state is over \$2 billion. Direct tourist expenditures in 1962 were estimated at \$680 million. The Upper Peninsula Copper Country, the largest commercial deposit of native copper in the world, has yielded nearly 11 billion pounds during the past century. For the past few years Michigan's name and reputation has suffered. It was called a problem state, a poor state in which to do business. We still have many hurdles to overcome. But, Michigan has made an about face and once again is headed in a forward direction. Excessive political bickering, which handicapped our state in the past, has subsided and I hope will not be renewed. This year our legislature set one of the most progressive and distinguished records in recent history. Both of these changes have favorably impressed businessmen everywhere. Job-producing employers, instead of leaving our state, are staying to build and grow. Today, economic experts are predicting impressive capital spending in Michigan industry. Auto manufacturing companies have committed themselves to investments of over \$1.1 billion in facilities and equipment during 1963. Our five major public utility companies have made plans to invest more than \$240,000 in the state this year. Job opportunities in manufacturing concerns are expected to increase 17 percent within the current decade and service jobs will increase 30 percent, according to economic predictions. It is this rebirth of industry, renewed faith and vigor, a new self-confidence and spirit of team play that will usher Michigan into one of the brilliant decades of its history. Michigan Week is dramatizing the assets of our state.

# + Services in Our Churches +

**ST. PAUL'S EVANGELICAL AND REFORMED CHURCH**  
(United Church of Christ)  
The Rev. Paul M. Schnake, Pastor  
Friday, May 24—  
4:00 p.m.—Confirmation class.  
No confirmation class Saturday because of class trip.  
Sunday, May 26—  
8:15 a.m.—Regular early service.  
9:30 a.m.—Church school.  
10:45 a.m.—Special service, Oral examination Sunday for confirmation class.  
Articles for church paper due.  
Tuesday, May 28—  
7:45 p.m.—Teachers' meeting. New curriculum materials have arrived.

**ST. BARNABAS EPISCOPAL CHURCH**  
20800 Old US-12  
The Rev. J. R. Smucker, Vicar  
Sunday, May 26—  
8:00 a.m.—Holy Communion.  
9:00 a.m.—Church school.  
10:00 a.m.—Morning Prayer and sermon.  
Wednesday, May 29—  
7:00 a.m.—Holy Communion followed by breakfast.  
10:00 a.m.—Holy Communion.

**BETHEL EVANGELICAL AND REFORMED CHURCH**  
(United Church of Christ)  
Freedom Township  
The Rev. T. W. Menzel, Pastor  
Sunday, May 26—  
10:00 a.m.—Worship service.  
11:00 a.m.—Sunday school.  
Tuesday, May 28—  
8:00 p.m.—Adult Fellowship.

**NORTH SHARON COMMUNITY BIBLE CHURCH**  
The Rev. Carmen Carpenter, Pastor  
Sylvan and Washburn Roads  
Sunday, May 26—  
10 a.m.—Sunday school.  
11 a.m.—Worship service.  
7 p.m.—Evening service.  
Prayer meeting each Wednesday evening at 8 o'clock.

**MT. HOPE METHODIST CHURCH**  
Cor. Seymour and Mt. Hope Rds.  
The Rev. Karl H. Keefe, Pastor  
Saturday, May 25—  
9:30 a.m.—Children's and junior choir rehearsal.  
Sunday, May 26—  
10:30 a.m.—Sunday school. Mrs. Ardell Lantis, superintendent.  
11:15 a.m.—Worship service.  
Loud speakers have been installed in the Sunday school rooms so that those attending in camping or hunting clothes and those with small children may attend religious services by going into the Sunday school rooms if they are hesitant about going into the sanctuary.

**ST. JOHN'S EVANGELICAL AND REFORMED CHURCH**  
(United Church of Christ)  
(Francisco)  
The Rev. J. Tracy Luke, Pastor  
Sunday, May 26—  
11:00 a.m.—Worship service.  
11:30 a.m.—Sunday school.

**WATERLOO VILLAGE CHURCH**  
(Evangelical United Brethren)  
The Rev. Wilbur Silvernail, Pastor  
Sunday, May 26—  
10:00 a.m.—Sunday school.  
11:00 a.m.—Worship service.  
7:00 p.m.—Youth Fellowship.

**ST. JOHN'S EVANGELICAL AND REFORMED CHURCH**  
(United Church of Christ)  
(Rogers Corners)  
The Rev. J. Tracy Luke, Pastor  
Sunday, May 26—  
9:30 a.m.—Worship service.  
10:30 a.m.—Sunday school.

**ST. THOMAS EVANGELICAL LUTHERAN**  
The Rev. H. Spomer, Pastor  
Freedom Township  
Sunday, May 26—  
10:00 a.m.—Worship service.  
11:00 a.m.—Sunday school.

**CONGREGATIONAL CHURCH**  
(United Church of Christ)  
Sunday, May 26—  
10:00 a.m.—Morning service and church school.  
The Rev. Philip Rusten will continue as supply pastor whenever necessary. He may be reached at NO 2-1688.  
Until a new pastor is appointed all church groups who wish to have announcements included in this church column should call The Standard office direct, GR 5-8861, on or before the Saturday preceding publication date.

**ST. MARY'S CATHOLIC CHURCH**  
The Rev. Fr. Francis Mallesewski  
Sunday, May 26—  
Masses at 6:30 a.m., 8:00 a.m., 10:00 a.m. and 11:30 a.m.

**ZION LUTHERAN CHURCH**  
(Rogers Corners)  
The Rev. C. J. Renner, Pastor  
Thursday, May 23—  
7:00 p.m.—Adult catechism class.  
Saturday, May 25—  
No regular catechism class.  
Sunday, May 26—  
9:00 a.m.—Sunday school.  
10:15 a.m.—Worship service.  
Sermon topic: "The Power of the Lord's Supper."  
7:30 p.m.—Luther League.  
Monday, May 27—  
4:30 p.m.—Junior choir rehearsal.  
8:00 p.m.—Senior choir rehearsal.

**FIRST ASSEMBLY OF GOD CHURCH**  
14900 Old US-12  
The Rev. Harold S. Bilotta, Pastor  
Sunday, May 26—  
9:45 a.m.—Sunday school.  
11:00 a.m.—Worship service.  
7:30 p.m.—Evening service.  
Prayer meeting and Bible study each Wednesday, 7:30-8:30 p.m.

**CHELSEA BAPTIST CHURCH**  
Sunday, May 26—  
10:00 a.m.—Sunday school.  
11:00 a.m.—Worship service.  
8:00 p.m.—Young people's service.  
7:00 p.m.—Evening service.  
Prayer meeting each Wednesday, at 7:30 p.m.

**CHURCH OF CHRIST**  
18861 Old US-12, East  
Murray S. Hudgins, Minister  
Sunday, May 26—  
10:00 a.m.—Bible study.  
11:00 a.m.—Worship service.  
8:00 p.m.—Worship service.  
Bible study each Thursday at 7 p.m.

**SALEM GROVE METHODIST CHURCH**  
The Rev. John Jolley, Pastor  
Sunday, May 26—  
10:00 a.m.—Sunday school.  
11:15 a.m.—Worship service.

**METHODIST HOME CHAPEL**  
The Rev. E. J. Weiss, Pastor  
The Rev. G. P. Stanford, Chaplain  
Sunday, May 26—  
8:00 a.m.—Worship service.

**UNADILLA PRESBYTERIAN CHURCH**  
The Rev. William Yauch, Pastor  
Sunday, May 26—  
10:30 a.m.—Worship service.  
11:30 a.m.—Church school.

**GREGORY BAPTIST CHURCH**  
The Rev. Robert Ramsey, Pastor  
Sunday, May 26—  
10:00 a.m.—Sunday school.  
11:00 a.m.—Morning worship.

**NORTH LAKE METHODIST CHURCH**  
The Rev. John Jolley  
Sunday, May 26—  
9:30 a.m.—Worship service.  
10:45 a.m.—Sunday school.

**FIRST METHODIST CHURCH**  
The Rev. S. D. Kinde, Pastor  
Thursday, May 23—  
7:15 p.m.—Youth choir rehearsal.  
8:00 p.m.—Senior choir rehearsal.  
Sunday, May 26—  
10:00 a.m.—Nursery, kindergarten, primary and junior department Sunday school classes.  
10:00 a.m.—Morning worship service. Sacrament of Baptism. WSCS installation of officers.  
11:10 a.m.—Youth and adult church school classes.  
4:30 p.m.—Junior choir recognition party in the church social center.  
7:00 p.m.—MYF film: "One Love, Two Faiths," pertaining to mixed marriages.  
Monday, March 27—  
8:00 p.m.—Church school workers' conference in the educational unit.  
Sunday, June 2—  
Baccalaureate Sunday.

**FIRST CHURCH OF CHRIST SCIENTIST**  
1883 Washtenaw Ave., Ann Arbor  
Sunday, May 26—  
10:30 a.m.—Sunday school.  
11:00 a.m.—Morning service. Bible lesson: "Soul and Body." Responsive reading by the congregation will open with this verse: "My soul shall make her boast in the Lord: the humble shall hear thereof, and be glad" (Ps. 34:2).

If You Plan To Build or Remodel Your Home Call Us for . . .

**FREE ESTIMATES OR BIDS**  
— on —  
**PLUMBING, WIRING and HEATING**  
All Work Guaranteed with 1 Year Free Service  
WE SELL FOR LESS - WE WILL SAVE YOU MONEY  
Hours: Daily, 8-5:30; Friday, 8 a.m. to 8 p.m.  
EMERGENCY SERVICE CALLS: GR 9-5948  
**HILLTOP PLUMBING, HEATING & ELECTRICAL CONTRACTORS**  
201 SOUTH MAIN STREET  
Chelsea, Mich.  
Phone 479-3851

**Time for a Change**  
... from old, worn down tires to SAFE new ones! Come in today!  
Your tires have been taking a real beating . . . How much longer can they stand up? Better to be safe than sorry! Trade them in on a new set.  
**PURE OIL PRODUCTS**  
**HANKERD'S SERVICE**  
Tires — Batteries — Tune-Ups — Brake Service — Wheel Alignment  
PHONE 479-3541  
CHELSEA, MICH.



sale priced for may only  
**Rytex tempo**  
stationery with your name and address  
special quantity sale

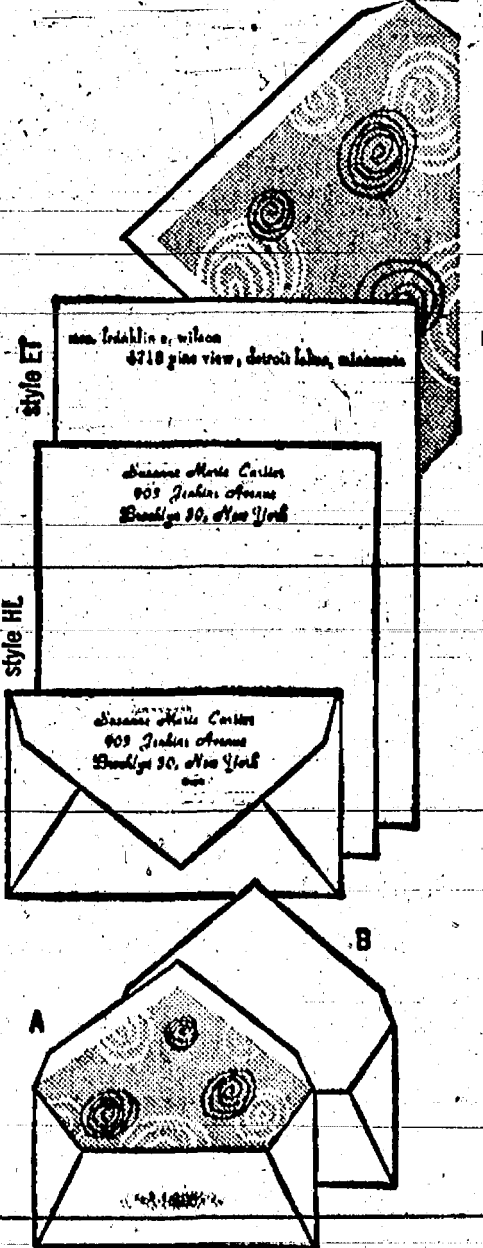
**\$3.69** (regularly \$6.00)  
200 club single sheets and 100 envelopes—or  
100 large monarch sheets and 100 envelopes

If you applaud the artistic economy of contemporary design, Rytex Tempo is for you. Its beauty helps remove some of the chores of writing, leaves a choreography of words dancing across the stage of your mind.

Rytex Tempo comes in white or blue vellum paper with your name and address imprinted in choice of styles shown. Choice of blue, grey or mulberry ink.

Club single sheets: Choice of lined envelopes (Style A) with Tempo design of white and grey swirls on blue background—or Style B envelopes without any lining. Larger Monarch Sheets are available with Style B envelopes only.

P.S. As a gift, Rytex proves your thoughtfulness—it's obviously made to order for the occasion.



# The Chelsea Standard

Mail order coupon

**THE CHELSEA STANDARD**  
CHELSEA, MICHIGAN

Please place my order for \_\_\_\_\_ boxes Rytex Tempo (double quantity) at \$3.69 a box, custom-imprinted as follows:

Name \_\_\_\_\_  
Street \_\_\_\_\_  
City \_\_\_\_\_ Zone \_\_\_\_\_ State \_\_\_\_\_

Check choice of the following:

Size sheet and envelope style \_\_\_\_\_ Color—Paper \_\_\_\_\_ Imprint Style \_\_\_\_\_  
☐ Club single with style A envelope ☐ White ☐ Style ET  
☐ Club single with style B envelope ☐ Blue ☐ Style HL  
☐ Large monarch with style B env. ONLY  
Color of ink: ☐ Blue ☐ Grey ☐ Mulberry

Ordered by: \_\_\_\_\_  
Street \_\_\_\_\_  
City \_\_\_\_\_ Zone \_\_\_\_\_ State \_\_\_\_\_

☐ Charge ☐ Payment enclosed Please add sales tax to prices.

# Summer Term Starts June 10

An office position with good salary and security just "12 weeks sooner," if you start June 10.  
Just 12 weeks sooner you are a J.B.U. graduate, and will enjoy our "Free" Employment Service, available throughout the nation.

It is better to be a "J.B.U." graduate, than to compete with one.

- Enroll now in one of these courses:
- ★ Executive Secretarial
  - ★ Secretarial
  - ★ Clerk Typist
  - ★ Professional Accounting
  - ★ Managerial Accounting
  - ★ Business Administration

Summer classes are from 8:30 to 2:20. Same courses, facilities and teachers as during other terms. Phone 789-6123.

# JACKSON BUSINESS UNIVERSITY

234 S. Mackenzie Street Jackson, Mich.

# SAVE \$203 WORTH OF PLUG-IN APPLIANCES

- Popcorn Popper.....\$ 6.47
- Pressure Cooker.....22.87
- Deep Fat Fryer.....20.88
- Sandwich Grill.....27.98
- Bean Pot.....4.99
- Egg Cooker.....13.95
- Roaster.....37.88
- Coffee Maker.....29.88
- Skillet.....24.87
- Bottle Warmer.....2.50
- Bottle Sterilizer.....10.95

\*Average cost \$203.22\*

Forget about plug-in appliances! Burner-with-a-brain on a Gas range makes every pan automatic. Maintains preset, thermostatically controlled temperature inside pan. See this and even more on today's Gas ranges. Buys are better than ever now at dealer or Gas Company showrooms. Easy Terms.

# MICHIGAN CONSOLIDATED GAS COMPANY





**NO MATTER WHAT THE WEATHER IS  
WASH AND DRY  
THE MODERN WAY at  
CHELSEA MOTORS  
LAUNDROMAT**

**WASH 20c — DRY 10c  
DRY CLEANING \$1.50  
ALWAYS LOTS OF FREE PARKING**

Have Your Car Serviced While Doing Your Laundry  
and Dry Cleaning.

Just North of I-94 Expressway on Manchester Rd. (M-52)  
PHONE CHELSEA 475-5011

**BUY NOW...  
SAVE OVER 20%**

**SPECIAL LOW PRICE**

on famous PITTSBURGH

**SUN-PROOF**



**\$5.98**  
PER GALLON

(Available in White, including  
mildew- and fume-resistant White,  
and fourteen ready-mixed body colors.)

You need only one coat for most repaint work  
when you use famous Pittsburgh SUN-PROOF House Paint.  
No primer is required. And you can paint right over  
chalky surfaces. SUN-PROOF also gives you the extra  
protection of fume-resistant pigments and special  
VITOLIZED OIL®.

**Chelsea Hardware**  
Phone GR 9-6311  
**PITTSBURGH PAINTS**

## 8-Year-Old Thrilled with Flying Tour

Brad Curtis, 8, of 109 Orchard St., was a guest of his father, Myron Curtis, in a flying tour with the Jackson Engineers Club Saturday.

The flight, on the North Central Airlines DC-3, originated at Jackson Municipal Airport where the group first saw a 30-minute movie about the Federal Aviation Agency.

The first leg of the flight, to Willow Run, was interesting because it was still daylight and the plane passed to the south of Chrysler's Proving Grounds. Brad, who is a third grader at South School, could see many of the Chelsea landmarks—the water tower, the grain storage bins at the Chelsea Milling Co., and the new Shell gas station tower.

At Willow Run the group visited the control tower, the radar control rooms and saw much of the "behind the scenes" operation of an airport.

The second leg of the flight was to Detroit Metropolitan airport where the group visited the Weather Bureau Station and the air traffic control center.

The flight back to Jackson, after dark, also interesting due to the extremely clear weather and the many lights that could be seen below.

Brad reportedly was thrilled with the trip on the plane, the pilot's wings he received from the stewardess, and his visit to the cockpit of the plane where he talked with the captain and first officer.

## Attend Conference of Mills Association

James Gaken, head miller at Chelsea Milling Co., accompanied by Mrs. Gaken, attended the 67th annual technical conference and trade show of the Association of Operative Millers, held from Sunday until Thursday of last week at Buffalo, N. Y.

Those from Chelsea who attended the conference, in addition to Mr. and Mrs. Gaken are Mr. and Mrs. Donald Rowe and Thomas Franklin who is first assistant miller at Chelsea Milling Co.

Special entertainment was provided for the wives who accompanied their husbands, the schedule including a visit to Niagara Falls.

Men who were present for the conference were taken on a tour of two new mills—the General Mills Bellera Mill at Buffalo where new milling techniques were demonstrated, and Maple Leaf Mills at Fort Colborne, Ontario, Canada. The Canadian mill is a new installation replacing a former structure which was destroyed by fire.

A mighty big frying pan would be needed for Michigan's 1962 volume of eggs. The total was 1,826,000,000 eggs, worth \$85½ million to producers. This is about 40 percent of the eggs eaten in our state. Michigan was 17th in egg production last year.



**REBEKAHS HONOR 50-YEAR MEMBER**—All but five of the 26 surviving past noble grands of Rebekah Lodge No. 130 were present recently at the 100F Hall when one of their number, Mrs. Anna McDonald, was honored for 50 years of active Rebekah membership. She has been a member of the Chelsea Lodge for more than 35 years, having transferred here from northern Michigan. Mrs. McDonald was surprised with a "This Is Your Life" program during which her three sisters were introduced as Mrs. Russell Bernath read the program material. Mrs. McDonald was presented with a gold color chrysanthemum plant on behalf of the lodge during the program and at the conclusion, Mrs. Joyce Dietle for the past noble grands, presented the honor guest with a grandmother's bracelet, appropriately inscribed. Noble grands shown in the photo, some wearing old fashioned costumes for their part in

the program, are, seated, from left, Mrs. Viola Slane, Mrs. Kathleen Bernath, Mrs. Lucille Altstetter, Mrs. Eulabelle Packard, Mrs. Gladys Breitenwischer and Mrs. Gladys Parks. Standing, also from left, are Mrs. Marjorie Burnett, Mrs. Lulu Sweeny, Mrs. Doris Keeney, Mrs. Ida Nixon, Mrs. Helen Harris, Mrs. Mary Weimann, Mrs. Anna McDonald who was the honoree, Mrs. Mary Ann Coltre, Mrs. Josephine Fowler, Mrs. Verna Wolfe, Mrs. Elsie Hinz, Mrs. Alice Gilson, Mrs. Joyce Dietle, Mrs. Dorothy Keezer and Mrs. Edith Hoffman. Past noble grands who were absent are Mrs. Pearl Herman, Mrs. Alice Krumm, Mrs. Veva Munro, Mrs. Belle Barth and Mrs. Tryllis Boyer. Mrs. McDonald's sisters present for the occasion, all from northern Michigan, are Mrs. Olive York, Mrs. Nellie Canfield and Mrs. Lillian Neff.

## Herman Ashley Named To Head PTO

Principal business at the May 15 meeting of the Chelsea Parent Teacher Organization (PTO) was the election of officers for the coming year. Those named are Herman Ashley, president; Ross Scholtens, vice-president; Charles Lancaster, treasurer; and Mrs. Eldon G. Gorton, secretary.

A decision was made to set meetings for the 1963-64 school year to be held the third Wednesday in September, November, January, March and May. The dates will be listed in the community calendar.

The program at Wednesday's meeting was centered on topics brought before the group by means of questions which had been deposited in boxes placed in various locations in downtown stores for the convenience of those who wished to have matters clarified.

The questions were submitted to a panel composed of School Board members, School Superintendent Charles Cameron, High School Principal Charles Lane, Junior High Principal Alan Conklin and Elementary Principal Arthur Schmunk. Robert Daniels acted as moderator.

Among the many questions were such widely divergent ones as cost of operation of school buses and views of faculty, board members and parents on the matter of disciplinary methods. Each question submitted brought forth related topics for discussion and reports of the meeting state that the gathering proved "most interesting and informative."

One of the questions pertaining to disciplinary methods was, "Does the Board approve of physical punishment, such as spanking, etc.?" Some of the comments indicated that lack of proper training at home in showing respect to elders and teachers was an important factor in disciplinary problems in schools.

After discussion of the matter, it was pointed out that some courts have ruled that physical punishment may be used within reason and in a degree in keeping with

the offense. Physical chastisement should never be used for a first offense—it should be a last resort after counseling, talks, meetings with parents and all other efforts at correction have failed.

Further explanation brought out that the school teachers and administrators are empowered to use any reasonable punishment as might be used by any reasonable parent in administering discipline.

In response to other questions—particularly related to students being expelled, it was emphasized that it is the school administration that acts when it determines that a student has gone "beyond acceptable behavior" but it is the duty of the School Board to make the final decision.

Alan Conklin, Junior High school principal, mentioned the matter of chaperones and adult guests at school parties and dances. Tried out on an experimental basis in

Junior High, it has proved such a satisfactory arrangement to students and chaperones, alike, that it is hoped by students, faculty and parents that the plan will continue into Senior High school.

Many matters brought up in the submitted questions were clarified to the satisfaction of the audience after detailed explanations by the panel members.

At the close of the meeting refreshments were served to the 60 persons present for the meeting.

## SERMON VS GAS

Thelma, England — While the Rev. Eric Knell was preaching the sermon, several members of the congregation began slumping in their seats.

It was learned that coke fumes from the boiler had seeped into the sanctuary. Police were called and first-aid was given to those affected.

**Mrs. Willis Porter's  
Parents Return to Germany**

Mrs. Willis Porter received word Friday of the safe arrival of her parents, Mr. and Mrs. Adelbert Ritz, at their home at Fischbach-on-Bodensee on the Swiss-German border. Mr. and Mrs. Ritz and spent the past 10½ months here with Mr. and Mrs. Porter and their family. They made the trip back to Germany on the North German Lloyd liner, the S. S. Berlin and described the trip as "wonderful"—saying that no storms were encountered and the weather was "shiny and pleasant."

Mr. and Mrs. Ritz, on leave for Germany three weeks ago, they hoped to return for a visit in two or three years—they wanted to come back again "the wonderful kind of Chelsea." They were specially appreciative of the entertainment provided at various times during their stay by the Club of Stockbridge, of which Porter was formerly a member. The club also entertained a well party in their honor.

Mr. and Mrs. Ritz arrived Fischbach on May 10, according to the letter received last night by Mrs. Porter.

Everybody falls for delicious

**Dairy Queen**

**Jack 'n Jill**  
sundae

You'll really tumble for this half 'n half treat, half chocolate, half vanilla, with over luscious Dairy Queen, famous for its country-fresh flavor. It's wonderful!

Come in for a treat TODAY!  
© 1962 Dairy Queen National Council, Inc.

CORNER OF OLD US-12 AND M-52, CHELSEA  
DUANE AND JOAN LUICK

**Spring Service**

Let Us Put Your Car  
"In Tune" for Spring  
and Summer Driving

- ★ MOTOR OVERHAULING
- ★ WHEEL BALANCING
- ★ RADIATOR, CARBURETOR SERVICE
- ★ SPRING SERVICE
- ★ GOODYEAR TIRES
- ★ WRECKER SERVICE

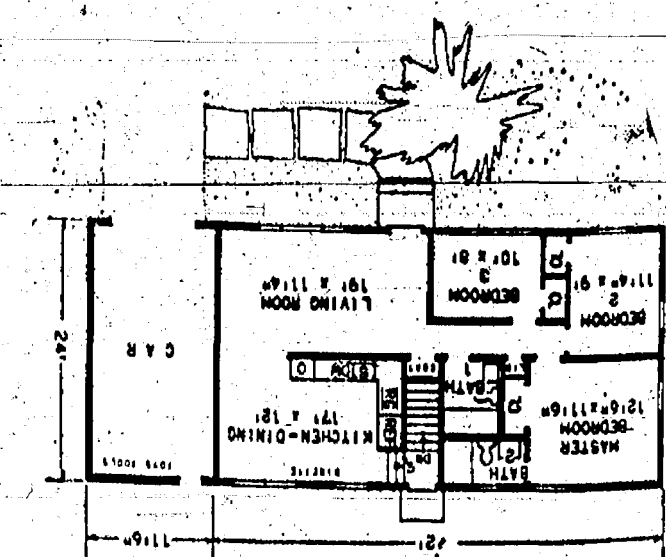
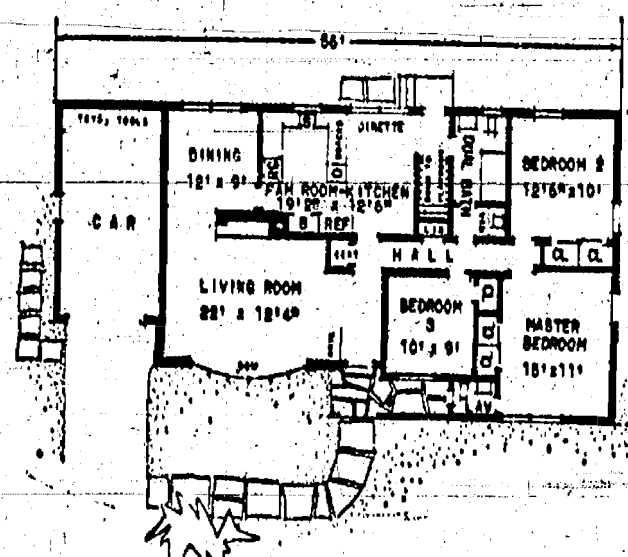
**BALMER'S  
BRAKE SERVICE**

24-HOUR WRECKER SERVICE  
140 W. MIDDLE ST. PHONE GR 5-5131

## Delay May Prove Costly ...

★ **PLAN TO BUILD**  
★ **BUILD FROM A PLAN**

Check Our File of More Than 500 Designs. From \$9.50 per set.



**Protect  
Your  
Business**

... with a Planned  
Insurance Program

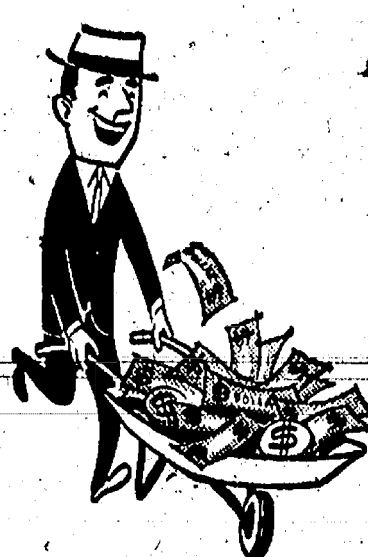
Let us make a survey of  
your insurance needs.  
Then, we'll plan a sound  
over-all program to cover  
every risk. You'll get  
total protection. And you  
can pay on easy terms ...  
release capital for other  
uses.

Investigate now. No  
obligation.

**A. D. MAYER  
AGENCY**

115 Park St. Phone 475-5061  
"Your Protection Is Our Business"

Representing  
GREAT AMERICAN  
Insurance Co. - New York



Compare the Ways To Build ... You'll Find  
You Get More  
From Each Building Dollar  
at  
**CHELSEA LUMBER CO.**  
DIAL GR 5-3391

May We Bid or Estimate Your Building Costs?

**Something  
NEW  
For Chelsea  
BROASTED  
CHICKEN — SHRIMP — CHOPS**

"The Greatest Thing Since Man Discovered Fire"

We Have Installed New Cooking Equipment  
OUR FOOD IS NOW BETTER AND MUCH BETTER

**Served Here Or To Take Out**

Take home a whole chicken, chicken, shrimp, or pork  
chop dinner for 1 or 100. You will enjoy its truly  
delicious flavor.

The World's Finest Eating Chicken Is Broasted

★ All Broasted Foods Are Cooked To Order ... Raw Product to Finish.  
★ Positively Not Greasy ★ No Batter Ever Used

**F & M RESTAURANT**

104 N. Main Street

Phone GR 5-8744

HOURS: Sunday, 7 a.m. to 8 p.m.; Monday, Tuesday, Saturday, 6 a.m. to 8 p.m.  
Wednesday, Thursday, Friday, 6 a.m. to 9 p.m.